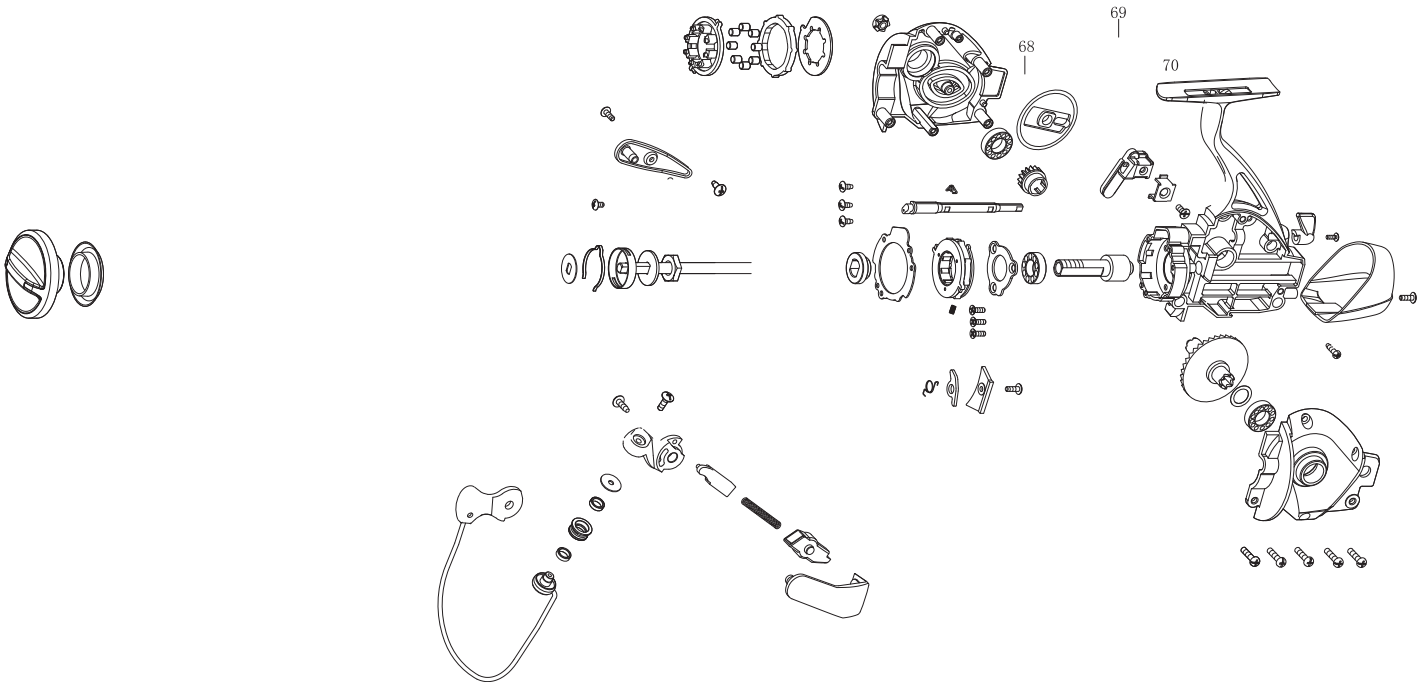


SPINNING REEL

SCRAMBLER

SS10000
GEAR RATIO (4.1/5.2)**Key
NO.****Parts No.****Parts name**

1	2YD-076-02	DRAG KNOB ASSEMBLY
2	2E9-035-01	PROOF WATER RING
3	2E4-028-01	DRAG WASHER RETAINER
4	2W2-033-01	KEY WASHER
5	2W1-094-01	O60-220 WASHER
6	2W3-013-01	EARED WASHER
7	2YT-361-03	SPOOL TOTAL ASSEMBLY
8	2W2-050-01	KEY WASHER
9	2L3-018-01	CLICK LEAF SPRING
10	2F8-027-02	CLICK LEAF SPRING HOLDER
11	2M3-095-01	MAIN SHAFT
12	2W2-034-01	KEY WASHER
13	2E3-003-01	ROTOR NUT
14	2E2-006-01	B26M-050 SCREW
15	2R1-111-02	ROTOR
16	2E1-037-03	B30-080 SCREW
17	2R4-142-01	BAIL TRIP COVER
18	2E2-005-05	B26M-080 SCREW
19	2E1-011-03	B30-100 SCREW
20	2E2-007-04	B30M-100 SCREW
21	2R2-030-02	BAIL ARM
22	2C1-049-01	LINE ROLLER COLLAR
23	2Z1-001-05	508-2.5 BALL BEARING
24	2R6-014-01	LINE ROLLER
25	2C1-068-01	COLLAR
26	2YL-121-02	BAIL ASSEMBLY
27	2R5-088-01	BAIL TRIP SHAFT
28	2Q1-092-01	BAIL SPRING
29	2C2-100-01	BAIL SPRING GUIDE
30	2R4-141-01	BAIL SPRING COVER
31	2Q3-056-01	BAIL TRIP LEVER SPRING
32	2R5-089-01	BAIL TRIP LEVER
33	2F5-283-02	ROTOR COVER
34	2A4-019-01	ONE-WAY CLUTCH INNER TUBE
35	2E2-029-01	B26M-060 SCREW
36	2F5-284-01	ROLLER CLUTCH RETAINER
37	2YZ-020-01	ONE-WAY CLUTCH BEARING ASSEMBLY

**Key
NO.****Parts No.****Parts name**

38	2F8-084-01	CAGE	
39	2Z3-003-01	ROLLER	
40	2A3-009-01	ANTI-REVERSE RATCHET	
41	2F2-033-01	ANTI-REVERSE PAWL	
42	2Q1-071-01	CAGE SPRING	
43	2E2-052-02	F26M-080 SCREW	
44	2F5-259-01	BEARING RETAINER	
45	2Z1-035-05	917-5 BALL BEARING	
46	2G2-097-01	PINION GEAR	
47	2A2-073-01	ANTI-REVERSE CAM	
48	2Q3-009-01	ANTI-REVERSE SPRING	
49	2YB-165-04	BODY ASSEMBLY	
50	2B2-069-06	BODY COVER (R)	
51	2G3-063-01	DRIVE PINION	
52	2G3-064-01	OSCILLATING GEAR	
53	2M2-011-01	OSCILLATING CAM	
54	2M1-044-01	OSCILLATING SLIDER	
55	2E5-034-01	OSCILLATING SLIDER RETAINER	
56	2E2-011-02	F30M-080 SCREW	
57	2E1-045-01	A26-080 SCREW	
58	2G1-086-01	DRIVE GEAR	
59	2W1-014-03	091-130 WASHER	
60	2B2-070-06	BODY COVER (L)	
61	2E1-006-04	A30-130 SCREW	
62	2YH-231-01	HANDLE TOTAL ASSEMBLY	
63	2C3-047-01	HANDLE SCREW SLEEVE	
64	2H6-002-10	HANDLE SCREW CAP	
65	2F5-278-01	REAR COVER	
66	2A1-025-06	ANTI-REVERSE LEVER	
67	2E2-013-04	B20M-060 SCREW	
68	2C1-089-01	COLLAR	
69	2W5-062-01	COVER	
70	2E1-063-01	F26-070 SCREW	
		GEAR RATIO 5.2	
		SPECIAL PARTS	
	46	2G2-120-01	PINION GEAR
	58	2G1-110-01	DRIVE GEAR