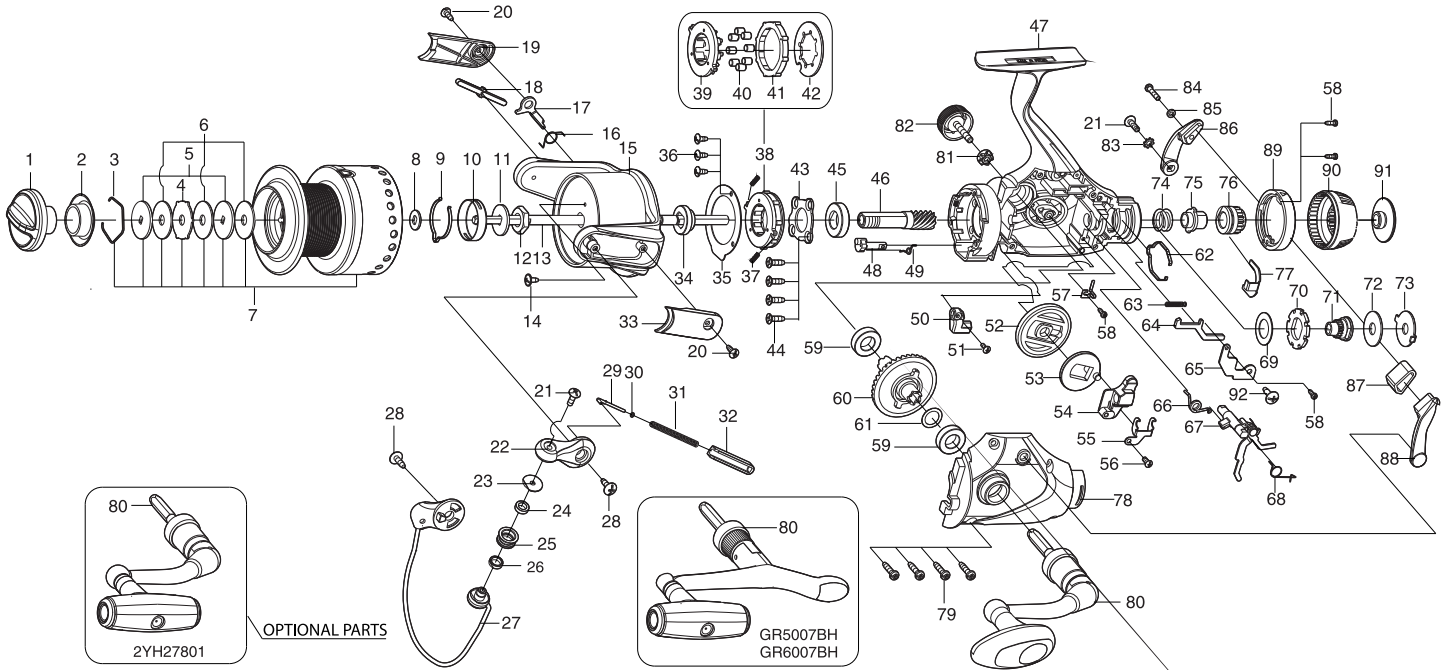




SPORTERA SPINNING REEL

GR5007 / GR5007BH / GR6007 / GR6007BH

Please order by parts number, not key number
Bitte, Best.-Nr. angeben (Nicht "key" -nr.)
Veuillez indiquer le numero de la piece (Non "key" no.)



Key NO.	Parts No.	Parts name	Key NO.	Parts No.	Parts name
1	2YD-030-07	DRAG KNOB ASSEMBLY	51	2E2-013-04	B20M-060 SCREW
2	2E9-028-01	WATER PROOF RING	52	2G3-071-01	OSCILLATING GEAR
3	2E4-028-01	DRAG WASHER RETAINER	53	2M2-012-01	OSCILLATING CAM
4	2W3-013-01	EARED WASHER	54	2M1-056-01	OSCILLATING SLIDER
5	2W2-027-02	KEY WASHER	55	2E5-049-01	OSCILLATING SLIDER RETAINER
6	2W1-094-01	O60-220 WASHER	56	2E2-040-01	b26M-060 SCREW
7	2YT-362-01	SPOOL TOTAL ASSEMBLY	57	2L2-014-01	HIT AND RUN CLICK PAWL
8	2W2-011-01	KEY WASHER	58	2E1-050-01	A20-060 SCREW
9	2L3-015-01	CLICK LEAF SPRING	59	2Z1-035-05	917-5 BALL BEARING
10	2F8-019-01	CLICK LEAF SPRING HOLDER	60	2G1-107-01	DRIVE GEAR
11	2W2-019-01	KEY WASHER	61	2W1-014-00	091-130 WASHER
12	2E3-003-01	ROTOR NUT	62	2L3-033-01	CLICK LEAF SPRING
13	2M3-119-01	MAIN SHAFT	63	2Q1-091-01	CLUTCH PAWL SPRING
14	2E1-019-01	D26-060 SCREW	64	2F6-108-01	CLUTCH PAWL
15	2R1-123-01	ROTOR	65	2F6-109-01	CLUTCH PAWL RETAINER
16	2Q3-108-01	BAIL SPRING	66	2Q3-078-01	CLUTCH PAWL SPRING
17	2R5-144-01	BAIL TRIP LEVER	67	2YA-029-01	HIT AND RUN LEVER SHAFT ASSEMBLY
18	2R5-143-01	BAIL PAWL	68	2Q3-110-01	SPRING B
19	2R4-161-01	BAIL TRIP COVER	69	2W1-180-01	112-190 WASHER
20	2E1-016-04	B26-080 SCREW	70	2A3-032-01	CLUTCH RATCHET
21	2E2-007-04	B30M-100 SCREW	71	2F3-054-01	CLICK GEAR
22	2R2-056-01	BAIL ARM	72	2W1-121-02	070-204 WASHER
23	2C1-049-01	LINE ROLLER COLLAR	73	2W3-019-01	EARED WASHER
24	2Z1-001-05	508-2.5 BALL BEARING	74	2Q1-002-01	DRAG SPRING
25	2R6-018-01	LINE ROLLER	75	2D3-023-01	PRESSURE SCREW
26	2C1-068-01	COLLAR	76	2D2-011-01	HIT AND RUN CONTROL NUT
27	2YL-131-01	BAIL ASSEMBLY	77	2E5-047-01	CONTROL NUT RETAINER
28	2E1-010-04	b30-100 SCREW	78	2B2-089-01	BODY COVER
29	2R5-135-01	BAIL TRIP SHAFT	79	2E1-006-04	A30-130 SCREW
30	2W1-199-01	015-027 WASHER	80	2YH-275-01	HANDLE TOTAL ASSEMBLY
31	2Q1-101-01	BAIL SPRING	81	2C3-047-01	HANDLE SCREW SLEEVE
32	2C2-111-01	BAIL SPRING GUIDE	82	2H6-002-10	HANDLE SCREW CAP
33	2R4-162-01	BAIL SPRING COVER	83	2E8-004-01	STARWASHER
34	2A4-019-01	ONE-WAY CLUTCH INNER TUBE	84	2E2-039-01	A26M-120 SCREW
35	2F5-332-01	ROLLER CLUTCH RETAINER	85	2W1-127-01	027-048 WASHER
36	2E1-015-02	B26-060 SCREW	86	2D4-005-01	HIT AND RUN LEVER ARM (L)
37	2Q1-071-01	CAGE SPRING	87	2C3-026-03	LEVER ARM SPACER
38	2YZ-015-01	ONE-WAY CLUTCH BEARING ASSEMBLY	88	2D4-006-01	HIT AND RUN LEVER ARM (R)
39	2F8-084-01	CAGE	89	2F5-333-01	REAR COVER
40	2Z3-003-01	ROLLER	90	2D1-053-02	HIT AND RUN CONTROL KNOB
41	2A3-009-01	ANTI-REVERSE RATCHET	91	2E0-016-02	HIT AND RUN CONTROL KNOB SCREW
42	2F2-035-01	ANTI-REVERSE PAWL	92	2E1-010-01	b30-100 SCREW
43	2F5-260-01	BEARING RETAINER			
44	2E1-068-01	F30-100 SCREW	GR5007BH	SPECIAL PARTS	
45	2Z1-008-05	1020-5 BALL BEARING	80	2YH-276-01	HANDLE TOTAL ASSEMBLY
46	2G2-082-01	PINION GEAR	GR6007	SPECIAL PARTS	
47	2YB-205-01	BODY ASSEMBLY	7	2YT-363-01	SPOOL TOTAL ASSEMBLY
48	2A2-071-01	ANTI-REVERSE CAM	GR6007BH	SPECIAL PARTS	
49	2Q3-009-01	ANTI-REVERSE SPRING	7	2YT-363-01	SPOOL TOTAL ASSEMBLY
50	2A1-026-04	ANTI-REVERSE LEVER	80	2YH-276-01	HANDLE TOTAL ASSEMBLY