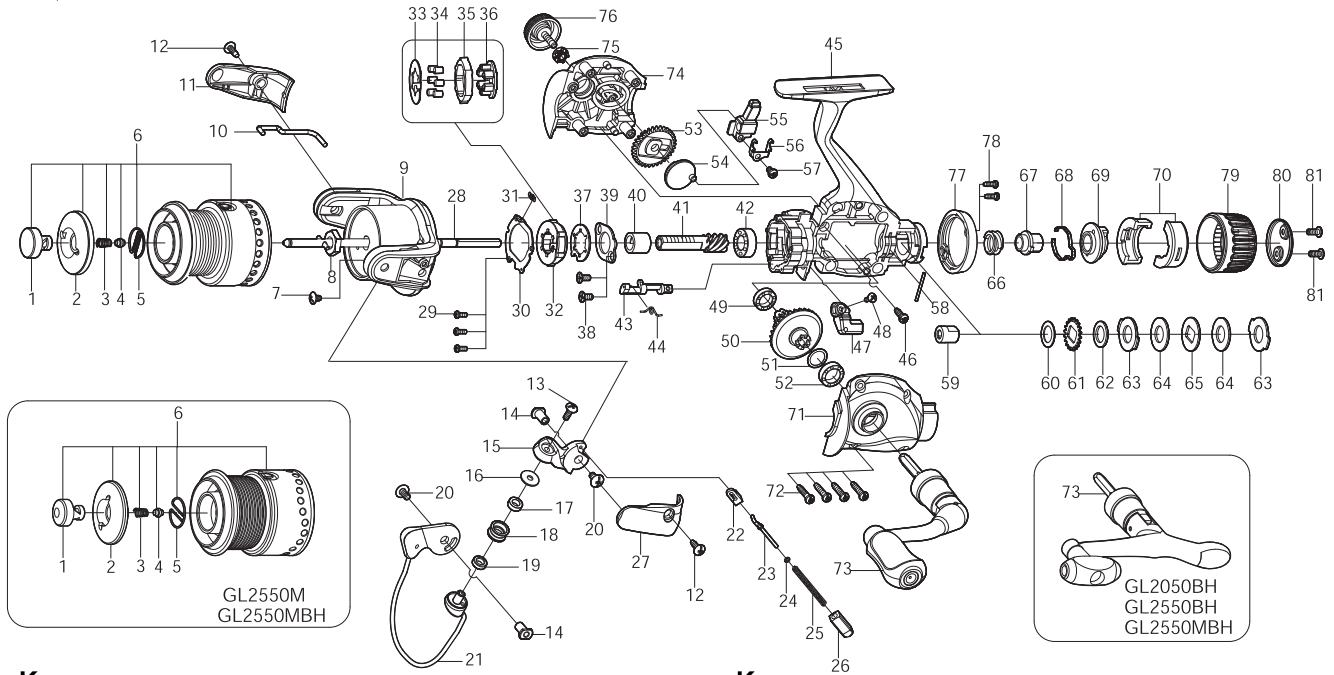




SPINNING REEL *STUNNA*

**GL2050 / GL2050BH / GL2550 / GL2550M
 GL2550BH / GL2550MBH**



Key NO.	Parts No.	Parts name
1	2S3-003-07	PUSH BUTTON
2	2S2-003-06	SPOOL CAP
3	2Q1-093-01	BUTTON SPRING
4	2P4-014-01	BUTTON SHAFT SPACER BAR
5	2Q3-018-01	PUSH BUTTON RETAINER
6	2YT-378-01	SPOOL TOTAL ASSEMBLY
7	2E1-036-01	B26-040 SCREW
8	2E3-007-01	ROTOR NUT
9	2R1-125-01	ROTOR
10	2R5-147-01	BAIL PAWL
11	2R4-166-01	BAIL TRIP COVER
12	2E1-016-04	B26-080 SCREW
13	2E2-083-02	B26M-110 SCREW
14	2E3-066-01	SHAFT NUT
15	2R2-057-01	BAIL ARM
16	2C1-056-01	LINE ROLLER COLLAR
17	2Z1-012-05	407-2.5 BALL BEARING
18	2R6-012-01	LINE ROLLER
19	2C2-072-01	LINE ROLLER BUSH
20	2E2-004-01	B30M-060 SCREW
21	2YL-135-01	BAIL ASSEMBLY
22	2F5-346-01	BAIL TRIP SHAFT COVER
23	2R5-132-01	BAIL TRIP SHAFT
24	2W1-199-01	015-027 WASHER
25	2Q1-096-01	BAIL SPRING
26	2C2-105-01	BAIL SPRING GUIDE
27	2R4-165-01	BAIL SPRING COVER
28	2M3-122-01	MAIN SHAFT
29	2E2-044-01	A20M-050 SCREW
30	2F5-356-01	ROLLER CLUTCH RETAINER
31	2Q2-016-01	SPRING
32	2YZ-019-01	ONE-WAY CLUTCH BEARING ASSEMBLY
33	2F2-030-01	ANTI-REVERSE PAWL
34	2Z3-001-01	ROLLER
35	2A3-008-01	ANTI-REVERSE RATCHET
36	2F8-080-01	CAGE
37	2F2-037-01	ANTI-REVERSE PAWL
38	2E2-014-02	F26M-060 SCREW
39	2F5-212-01	BEARING RETAINER
40	2A4-021-01	ONE-WAY CLUTCH INNER TUBE
41	2G2-128-01	PINION GEAR
42	2Z1-003-05	714-5 BALL BEARING
43	2A2-088-01	ANTI-REVERSE CAM
44	2Q3-102-01	ANTI-REVERSE SPRING
45	2YB-214-01	BODY ASSEMBLY
46	2E1-045-01	A26-080 SCREW
47	2A1-026-07	ANTI-REVERSE LEVER

Key NO.	Parts No.	Parts name
48	2E2-013-04	B20M-060 SCREW
49	2Z1-009-05	711-3 BALL BEARING
50	2G1-092-02	DRIVE GEAR
51	2W1-035-00	080-105 WASHER
52	2Z1-010-05	812-3.5 BALL BEARING
53	2G3-060-01	OSCILLATING GEAR
54	2M2-010-01	OSCILLATING CAM
55	2M1-059-01	OSCILLATING SILDER
56	2E5-053-01	OSCILLATING SLIDER RETAINER
57	2E2-016-01	A26M-040 SCREW
58	2P1-064-01	PIN
59	2F3-065-01	CLUTCH METAL
60	2W1-025-02	082-126 WASHER
61	2F3-018-01	CLICK GEAR
62	2W1-025-03	082-126 WASHER
63	2W3-007-01	EARED WASHER
64	2W1-022-03	082-162 WASHER
65	2W2-002-01	KEY WASHER
66	2Q1-085-01	DRAG SPRING
67	2D3-040-01	PRESSURE SCREW
68	2L3-039-01	CLICK LEAF SPRING
69	2D2-013-01	HIT AND RUN CONTROL NUT
70	2F6-110-01	POSITIONING RETAINER
71	2YC-106-01	BODY COVER ASSEMBLY
72	2E1-005-04	A26-120 SCREW
73	2YH-237-05	HANDLE TOTAL ASSEMBLY
74	2B2-094-01	BODY COVER (R)
75	2C3-042-01	HANDLE SCREW SLEEVE
76	2H6-017-01	HANDLE SCREW CAP
77	2F5-337-01	REAR COVER
78	2E1-050-01	A20-060 SCREW
79	2D1-062-01	DRAG KNOB
80	2F5-338-01	DRAG KNOB CAP
81	2E2-040-01	b26M-060 SCREW
GL2050BH	SPECIAL PARTS	
73	2YH-239-03	HANDLE TOTAL ASSEMBLY
GL2550	SPECIAL PARTS	
6	2YT-379-01	SPOOL TOTAL ASSEMBLY
GL2550M	SPECIAL PARTS	
6	2YT-385-01	SPOOL TOTAL ASSEMBLY
GL2550BH	SPECIAL PARTS	
6	2YT-379-01	SPOOL TOTAL ASSEMBLY
73	2YH-239-03	HANDLE TOTAL ASSEMBLY
GL2550MBH	SPECIAL PARTS	
6	2YT-385-01	SPOOL TOTAL ASSEMBLY
73	2YH-239-03	HANDLE TOTAL ASSEMBLY