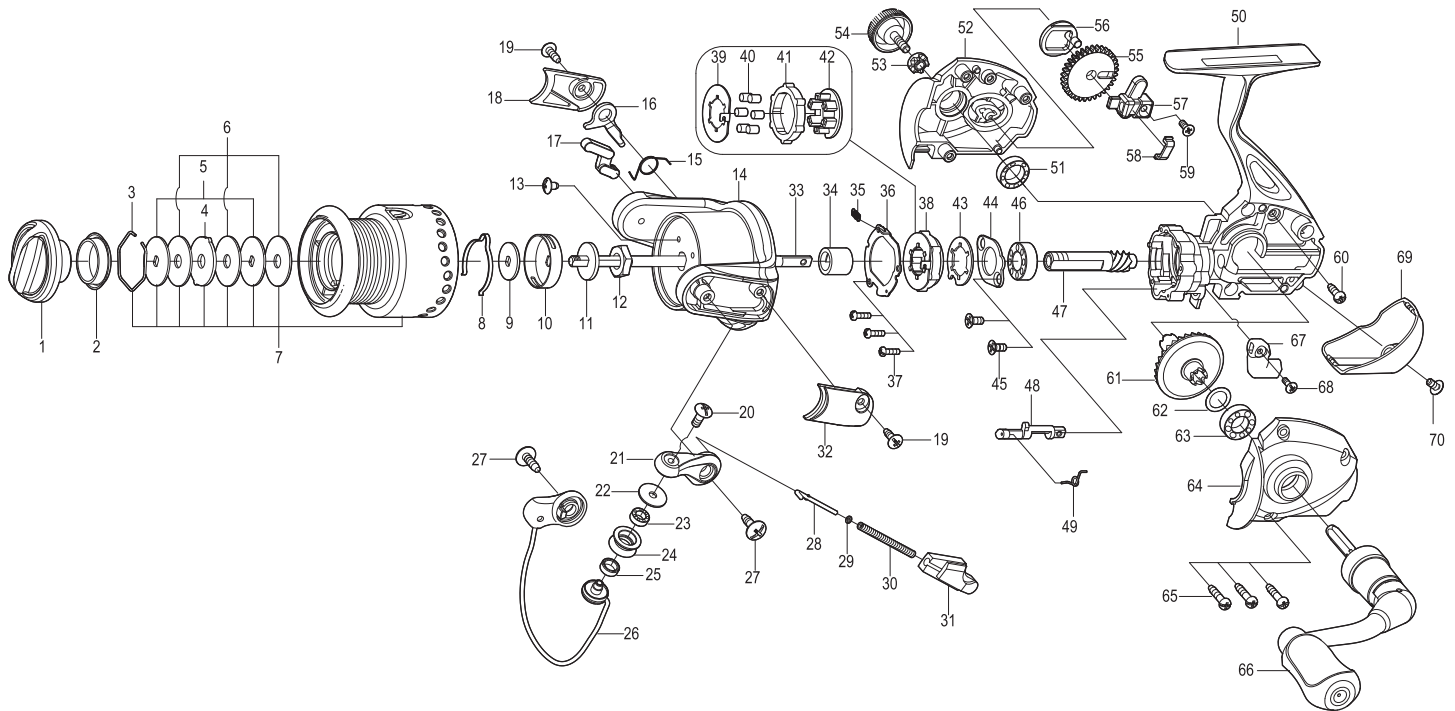




SPINNING REEL

GAINER

GA2000 / GA2500



Key NO.	Parts No.	Parts name	Key NO.	Parts No.	Parts name
1	2YD-054-08	DRAG KNOB ASSEMBLY	37	2E2-044-01	A20M-050 SCREW
2	2E9-019-01	PROOF WATER RING	38	2YZ-019-01	ONE-WAY CLUTCH BEARING ASSEMBLY
3	2E4-009-01	DRAG WASHER RETAINER	39	2F2-030-01	ANTI-REVERSE PAWL
4	2W3-014-01	EARED WASHER	40	2Z3-001-01	ROLLER
5	2W2-013-02	KEY WASHER	41	2A3-008-01	ANTI-REVERSE RATCHET
6	2W1-052-02	050-187 WASHER	42	2F8-080-01	CAGE
7	2YT-380-02	SPOOL TOTAL ASSEMBLY	43	2F2-037-01	ANTI-REVERSE PAWL
8	2L3-014-01	CLICK LEAF SPRING	44	2F5-212-01	BEARING RETAINER
9	2W2-020-01	KEY WASHER	45	2E2-052-02	F26M-080 SCREW
10	2F8-013-01	CLICK LEAF SPRING HOLDER	46	2Z1-003-05	714-5 BALL BEARING
11	2W2-015-01	KEY WASHER	47	2G2-131-01	PINION GEAR
12	2E3-007-01	ROTOR NUT	48	2A2-088-01	ANTI-REVERSE CAM
13	2E1-036-01	B26-040 SCREW	49	2Q3-102-01	ANTI-REVERSE SPRING
14	2R1-126-01	ROTOR	50	2YB-216-01	BODY ASSEMBLY
15	2Q3-108-01	BAIL SPRING	51	2Z1-009-05	711-3 BALL BEARING
16	2R5-150-01	BAIL TRIP LEVER	52	2B2-103-01	BODY COVER ( R )
17	2R5-149-01	BAIL PAWL	53	2C3-042-01	HANDLE SCREW SLEEVE
18	2R4-168-01	BAIL TRIP COVER	54	2H6-001-12	HANDLE SCREW CAP
19	2E1-016-02	B26-080 SCREW	55	2G3-084-01	OSCILLATING GEAR
20	2E2-018-01	B30M-080 SCREW	56	2M2-018-01	OSCILLATING CAM
21	2R2-053-02	BAIL ARM	57	2M1-061-01	OSCILLATING SLIDER
22	2C1-034-01	LINE ROLLER COLLAR	58	2E5-054-01	OSCILLATING SLIDER RETAINER
23	2Z1-012-05	407-2.5 BALL BEARING	59	2E2-009-02	F23M-060 SCREW
24	2R6-020-02	LINE ROLLER	60	2E1-045-01	A26-080 SCREW
25	2C2-032-01	LINE ROLLER BUSH	61	2G1-069-01	DRIVE GEAR
26	2YL-136-01	BAIL ASSEMBLY	62	2W1-035-00	080-105 WASHER
27	2E1-010-01	b30-100 SCREW	63	2Z1-010-05	812-3.5 BALL BEARING
28	2R5-135-01	BAIL TRIP SHAFT	64	2B2-102-01	BODY COVER ( L )
29	2W1-199-01	015-027 WASHER	65	2E1-005-02	A26-120 SCREW
30	2Q1-100-01	BAIL SPRING	66	2YH-237-04	HANDLE TOTAL ASSEMBLY
31	2C2-113-01	BAIL SPRING GUIDE	67	2A1-026-09	ANTI-REVERSE LEVER
32	2R4-167-01	BAIL SPRING COVER	68	2E2-013-02	B20M-060 SCREW
33	2M3-123-01	MAIN SHAFT	69	2F5-363-01	REAR COVER
34	2A4-021-01	ONE-WAY CLUTCH INNER TUBE	70	2E2-055-01	B23M-050 SCREW
35	2Q2-016-01	SPRING	GA2500	SPECIAL PARTS	
36	2F5-356-01	ROLLER CLUTCH RETAINER	7	2YT-381-02	SPOOL TOTAL ASSEMBLY