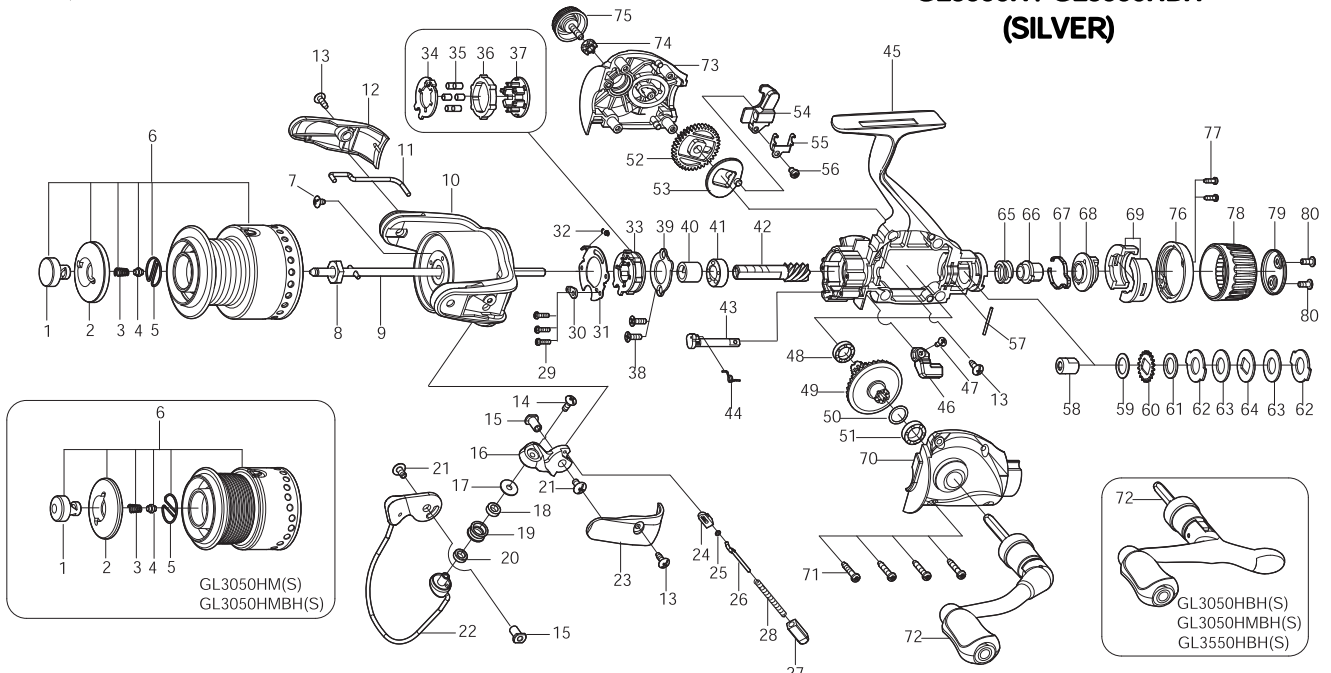




SPINNING REEL **STUNNA**

GL3050H / GL3050HM / GL3050HBH / GL3050HMBH
GL3550H / GL3550HBH
(SILVER)



Key

Key NO.	Parts No.	Parts name
1	2S3-003-07	PUSH BUTTON
2	2S2-003-07	SPOOL CAP
3	2Q1-093-01	BUTTON SPRING
4	2P4-014-01	BUTTON SHAFT SPACER BAR
5	2Q3-018-01	PUSH BUTTON RETAINER
6	2YT-383-04	SPOOL TOTAL ASSEMBLY
7	2E1-036-01	B26-040 SCREW
8	2E3-007-01	ROTOR NUT
9	2YM-075-01	MAIN SHAFT ASSEMBLY
10	2R1-124-03	ROYOR
11	2R5-145-01	BAIL PAWL
12	2R4-164-01	BAIL TRIP COVER
13	2E1-016-02	B26-080 SCREW
14	2E2-083-01	B26M-110 SCREW
15	2E3-066-01	SHAFT NUT
16	2R2-057-03	BAIL ARM
17	2C1-056-01	LINE ROLLER COLLAR
18	2Z1-012-05	407-2.5 BALL BEARING
19	2R6-012-02	LINE ROLLER
20	2C2-072-01	LINE ROLLER BUSH
21	2E2-004-01	B30M-060 SCREW
22	2YL-133-03	BAIL ASSEMBLY
23	2R4-163-01	BAIL SPRING COVER
24	2F5-346-01	BAIL TRIP SHAFT COVER
25	2W1-199-01	015-027 WASHER
26	2R5-132-01	BAIL TRIP SHAFT
27	2C2-105-01	BAIL SPRING GUIDE
28	2Q1-096-01	BAIL SPRING
29	2E2-026-01	A20M-075 SCREW
30	2F8-079-01	ANTI-REVERSE SPRING ANCHOR
31	2F5-192-01	ROLLER CLUTCH RETAINER
32	2Q2-016-01	SPRING
33	2YZ-014-01	ONE-WAY CLUTCH BEARING ASSEMBLY
34	2F2-028-01	ANTI-REVERSE PAWL
35	2Z3-001-01	ROLLER
36	2A3-008-01	ANTI-REVERSE RATCHET
37	2F8-078-01	CAGE
38	2E2-052-02	F26M-080 SCREW
39	2F5-193-01	BEARING RETAINER
40	2A4-021-01	ONE-WAY CLUTCH INNER TUBE
41	2Z1-003-05	714-5 BALL BEARING
42	2G2-145-01	PINION GEAR
43	2A2-031-01	ANTI-REVERSE CAM
44	2Q3-009-01	ANTI-REVERSE SPRING
45	2YB-217-02	BODY ASSEMBLY
46	2A1-026-10	ANTI-REVERSE LEVER

Key

Key NO.	Parts No.	Parts name
47	2E2-013-02	B20M-060 SCREW
48	2Z1-009-05	711-3 BALL BEARING
49	2G1-061-02	DRIVE GEAR
50	2W1-035-00	080-105 WASHER
51	2Z1-010-05	812-3.5 BALL BEARING
52	2G3-079-01	OSCILLATING GEAR
53	2M2-014-01	OSCILLATING CAM
54	2M1-064-01	OSCILLATING SILDER
55	2E5-055-01	OSCILLATING SOLDER RETAINER
56	2E2-016-01	A26M-040 SCREW
57	2P1-064-01	PIN
58	2F3-065-01	CLUTCH METAL
59	2W1-025-02	082-126 WASHER
60	2F3-018-01	CLICK GEAR
61	2W1-025-03	082-126 WASHER
62	2W3-007-01	EARED WASHER
63	2W1-022-03	082-162 WASHER
64	2W2-002-01	KEY WASHER
65	2Q1-085-01	DRAG SPRING
66	2D3-040-01	PRESSURE SCREW
67	2L3-039-01	CLICK LEAF SPRING
68	2D2-013-01	HIT AND RUN CONTROL NUT
69	2F6-110-01	POSITIONING RETAINER
70	2YC-107-02	BODY COVER ASSEMBLY
71	2E1-031-01	A26-140 SCREW
72	2YH-240-03	HANDLE TOTAL ASSEMBLY
73	2B2-100-02	BODY COVER (R)
74	2C3-042-01	HANDLE SCREW SLEEVE
75	2H6-017-05	HANDLE SCREW CAP
76	2F5-337-01	REAR COVER
77	2E1-050-01	A20-060 SCREW
78	2D1-062-02	DRAG KNOB
79	2F5-338-01	DRAG KNOB CAP
80	2E2-040-01	b26M-060 SCREW
	GL3050HM(S)	SPECIAL PARTS
6	2YT-386-04	SPOOL TOTAL ASSEMBLY
	GL3050HBH(S)	SPECIAL PARTS
72	2YH-242-02	HANDLE TOTAL ASSEMBLY
	GL3050HMBH(S)	SPECIAL PARTS
6	2YT-386-04	SPOOL TOTAL ASSEMBLY
72	2YH-242-02	HANDLE TOTAL ASSEMBLY
	GL3550H(S)	SPECIAL PARTS
6	2YT-384-04	SPOOL TOTAL ASSEMBLY
	GL3550HBH(S)	SPECIAL PARTS
6	2YT-384-04	SPOOL TOTAL ASSEMBLY
72	2YH-242-02	HANDLE TOTAL ASSEMBLY