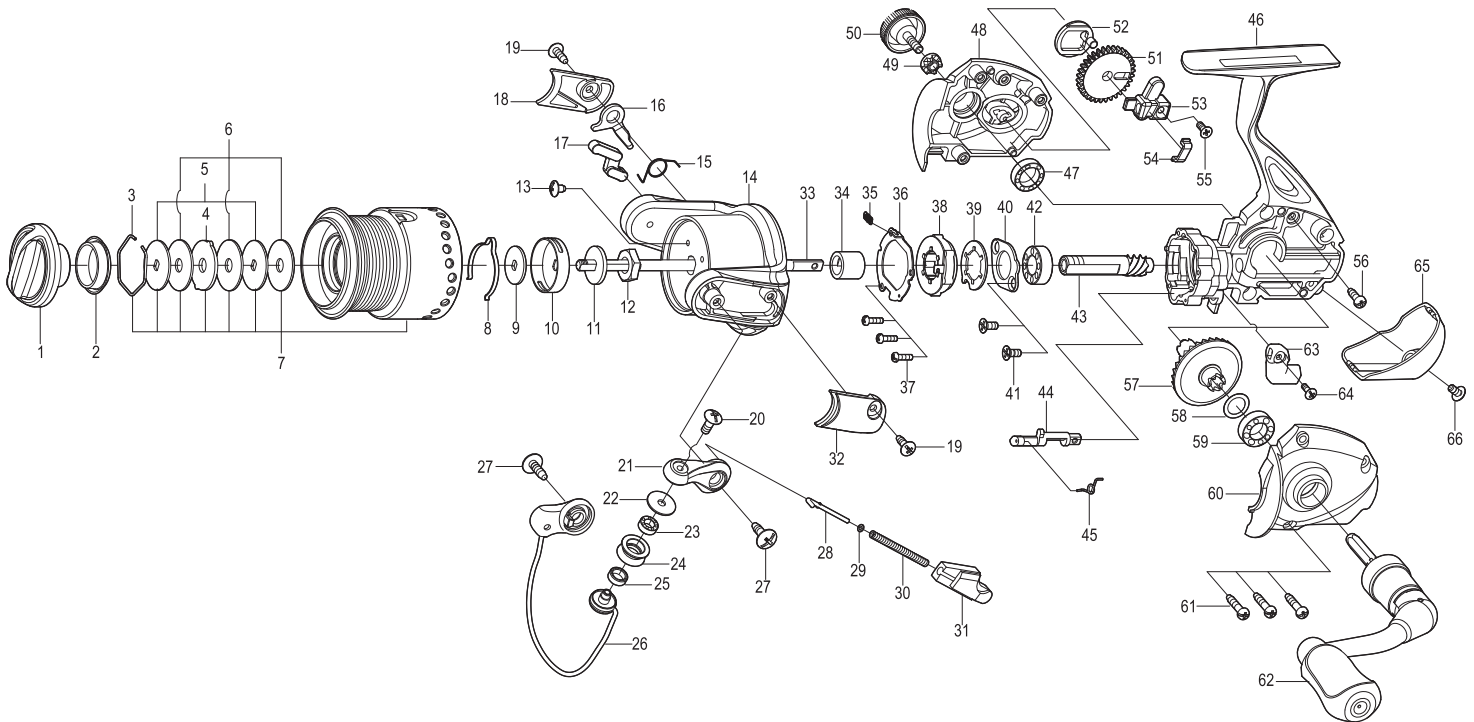




SPINNING REEL

GAINER

GA2500M



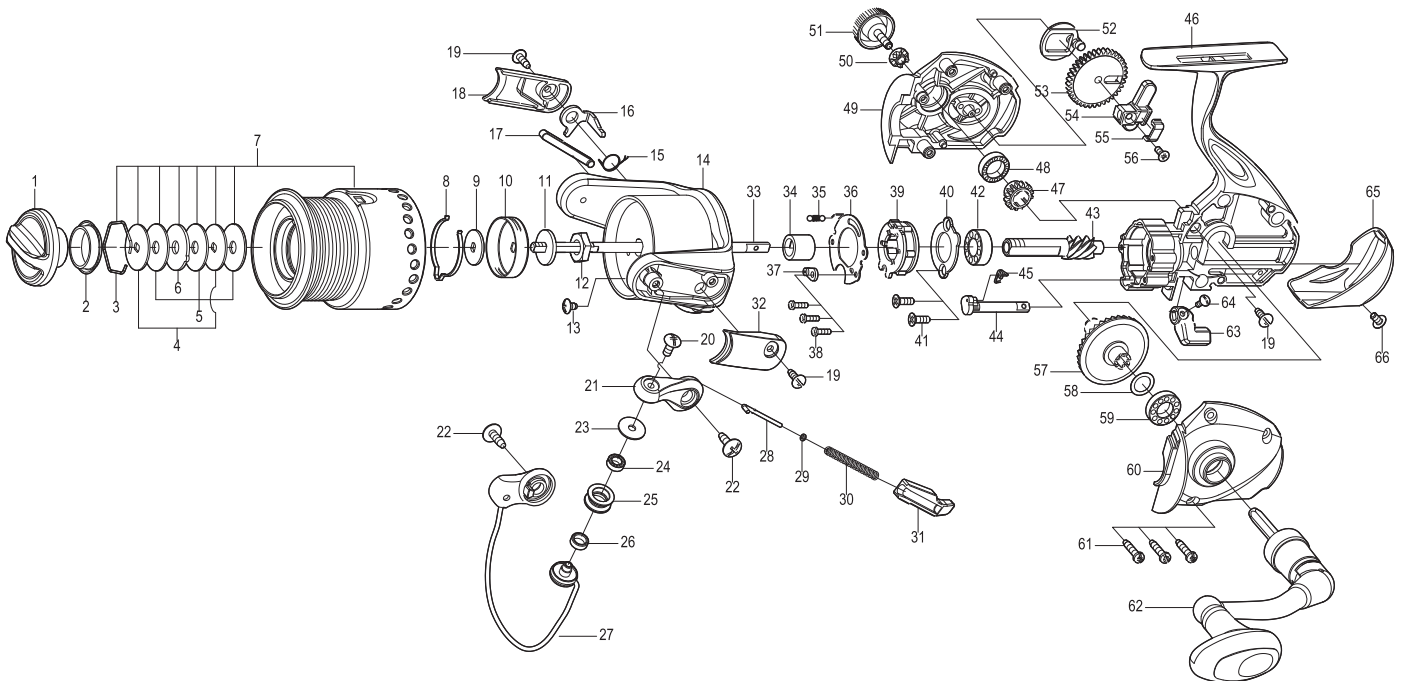
Key No.	Parts No.	Parts Name	Key No.	Parts No.	Parts Name
1	2YD-054-08	DRAG KNOB ASSEMBLY	34	2A4-021-01	ONE-WAY CLUTCH INNER TUBE
2	2E9-019-01	PROOF WATER RING	35	2Q2-016-01	SPRING
3	2E4-009-01	DRAG WASHER RETAINER	36	2F5-356-01	ROLLER CLUTCH RETAINER
4	2W3-014-01	EARED WASHER	37	2E2-044-01	A20M-050 SCREW
5	2W2-013-02	KEY WASHER	38	2YZ-019-01	ONE-WAY CLUTCH BEARING ASSEMBLY
6	2W1-052-02	050-187 WASHER	39	2F2-037-01	ANTI-REVERSE PAWL
7	2YT-402-01	SPOOL TOTAL ASSEMBLY	40	2F5-212-01	BEARING RETAINER
8	2L3-014-01	CLICK LEAF SPRING	41	2E2-052-02	F26M-080 SCREW
9	2W2-020-01	KEY WASHER	42	2Z1-003-05	714-5 BALL BEARING
10	2F8-013-01	CLICK LEAF SPRING HOLDER	43	2G2-131-01	PINION GEAR
11	2W2-015-01	KEY WASHER	44	2A2-088-01	ANTI-REVERSE CAM
12	2E3-007-01	ROTOR NUT	45	2Q3-102-01	ANTI-REVERSE SPRING
13	2E1-036-01	B26-040 SCREW	46	2YB-216-01	BODY ASSEMBLY
14	2R1-126-01	ROTOR	47	2Z1-009-05	711-3 BALL BEARING
15	2Q3-108-01	BAIL SPRING	48	2B2-103-01	BODY COVER (R)
16	2R5-150-01	BAIL TRIP LEVER	49	2C3-042-01	HANDLE SCREW SLEEVE
17	2R5-149-01	BAIL PAWL	50	2H6-001-12	HANDLE SCREW CAP
18	2R4-168-01	BAIL TRIP COVER	51	2G3-084-01	OSCILLATING GEAR
19	2E1-016-02	B26-080 SCREW	52	2M2-018-01	OSCILLATING CAM
20	2E2-018-01	B30M-080 SCREW	53	2M1-061-01	OSCILLATING SILDER
21	2R2-053-02	BAIL ARM	54	2E5-054-01	OSCILLATING SLIDER RETAINER
22	2C1-034-01	LINE ROLLER COLLAR	55	2E2-009-02	F23M-060 SCREW
23	2Z1-012-05	407-2.5 BALL BEARING	56	2E1-045-01	A26-080 SCREW
24	2R6-020-02	LINE ROLLER	57	2G1-069-01	DRIVE GEAR
25	2C2-032-01	LINE ROLLER BUSH	58	2W1-035-00	080-105 WASHER
26	2YL-136-01	BAIL ASSEMBLY	59	2Z1-010-05	812-3.5 BALL BEARING
27	2E1-010-01	b30-100 SCREW	60	2B2-102-01	BODY COVER (L)
28	2R5-135-01	BAIL TRIP SHAFT	61	2E1-005-02	A26-120 SCREW
29	2W1-199-01	015-027 WASHER	62	2YH-237-04	HANDLE TOTAL ASSEMBLY
30	2Q1-100-01	BAIL SPRING	63	2A1-026-09	ANTI-REVERSE LEVER
31	2C2-113-01	BAIL SPRING GUIDE	64	2E2-013-02	B20M-060 SCREW
32	2R4-167-01	BAIL SPRING COVER	65	2F5-363-01	REAR COVER
33	2M3-123-01	MAIN SHAFT	66	2E2-055-01	B23M-050 SCREW



SPINNING REEL

GAINER

GA3000M



Key No.	Parts No.	Parts Name	Key No.	Parts No.	Parts Name
1	2YD-054-08	DRAG KNOB ASSEMBLY	34	2A4-021-01	ONE-WAY CLUTCH INNER TUBE
2	2E9-019-01	PROOF WATER RING	35	2Q2-016-01	SPRING
3	2E4-009-01	DRAG WASHER RETAINER	36	2F5-192-01	ROLLER CLUTCH RETAINER
4	2W2-013-02	KEY WASHER	37	2F8-079-01	ANTI-REVERSE SPRING ANCHOR
5	2W1-052-02	050-187 WASHER	38	2E2-047-02	A20M-065 SCREW
6	2W3-014-01	EARED WASHER	39	2YZ-014-01	ONE-WAY CLUTCH BEARING ASSEMBLY
7	2YT-403-01	SPOOL TOTAL ASSEMBLY	40	2F5-193-01	BEARING RETAINER
8	2L3-015-01	CLICK LEAF SPRING	41	2E2-052-02	F26M-080 SCREW
9	2W2-020-01	KEY WASHER	42	2Z1-003-05	714-5 BALL BEARING
10	2F8-019-02	CLICK LEAF SPRING HOLDER	43	2G2-042-01	PINION GEAR
11	2W2-015-01	KEY WASHER	44	2A2-031-01	ANTI-REVERSE CAM
12	2E3-007-01	ROTOR NUT	45	2Q3-009-01	ANTI-REVERSE SPRING
13	2E1-036-01	B26-040 SCREW	46	2YB-219-01	BODY ASSEMBLY
14	2R1-119-02	ROTOR	47	2G3-068-01	DRIVE PINION
15	2Q3-108-01	BAIL SPRING	48	2Z1-010-05	812-3.5 BALL BEARING
16	2R5-137-01	BAIL TRIP LEVER	49	2B2-099-01	BODY COVER (R)
17	2R5-136-01	BAIL PAWL	50	2C3-042-01	HANDLE SCREW SLEEVE
18	2R4-153-01	BAIL TRIP COVER	51	2H6-001-12	HANDLE SCREW CAP
19	2E1-016-02	B26-080 SCREW	52	2M2-016-01	OSCILLATING CAM
20	2E2-018-01	B30M-080 SCREW	53	2G3-081-01	OSCILLATING GEAR
21	2R2-053-02	BAIL ARM	54	2M1-062-01	OSCILLATING SILDER
22	2E1-010-01	b30-100 SCREW	55	2E5-051-01	OSCILLATING SILDER RETAINER
23	2C1-034-01	LINE ROLLER COLLAR	56	2E2-009-02	F23M-060 SCREW
24	2Z1-012-05	407-2.5 BALL BEARING	57	2G1-128-01	DRIVE GEAR
25	2R6-020-02	LINE ROLLER	58	2W1-019-00	071-103 WASHER
26	2C2-032-01	LINE ROLLER BUSH	59	2Z1-039-05	713-4 BALL BEARING
27	2YL-126-02	BAIL ASSEMBLY	60	2B2-098-01	BODY COVER (L)
28	2R5-135-01	BAIL TRIP SHAFT	61	2E1-005-02	A26-120 SCREW
29	2W1-199-01	015-027 WASHER	62	2YH-305-01	HANDLE TOTAL ASSEMBLY
30	2Q1-097-01	BAIL SPRING	63	2A1-026-09	ANTI-REVERSE LEVER
31	2C2-106-01	BAIL SPRING GUIDE	64	2E2-013-02	B20M-060 SCREW
32	2R4-154-01	BAIL SPRING COVER	65	2F5-360-01	REAR COVER
33	2M3-120-01	MAIN SHAFT	66	2E2-055-01	B23M-050 SCREW