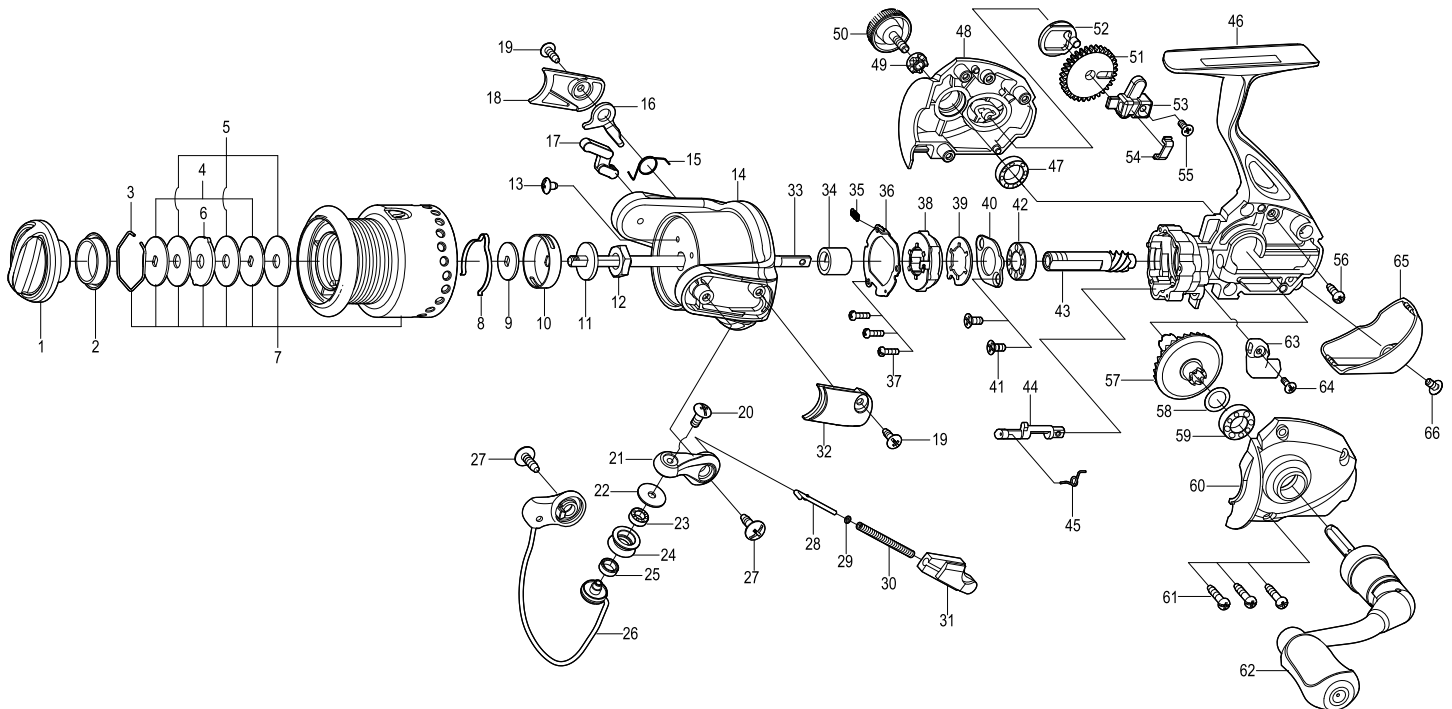




SPINNING REEL

GAINER

GA2000(C) / GA2500 (C)



Key NO.	Parts No.	Parts name	Key NO.	Parts No.	Parts name
1	2YD-054-08	DRAG KNOB ASSEMBLY	35	2Q2-016-01	SPRING
2	2E9-019-01	PROOF WATER RING	36	2F5-356-01	ROLLER CLUTCH RETAINER
3	2E4-009-01	DRAG WASHER RETAINER	37	2E2-044-01	A20M-050 SCREW
4	2W2-013-02	KEY WASHER	38	2YZ-019-01	ONE-WAY CLUTCH BEARING ASSEMBLY
5	2W1-052-02	050-187 WASHER	39	2F2-037-01	ANTI-REVERSE PAWL
6	2W3-014-01	EARED WASHER	40	2F5-212-01	BEARING RETAINER
7	2YT-380-03	SPOOL TOTAL ASSEMBLY	41	2E2-052-02	F26M-080 SCREW
8	2L3-014-01	CLICK LEAF SPRING	42	2Z1-003-05	714-5 BALL BEARING
9	2W2-020-01	KEY WASHER	43	2G2-131-01	PINION GEAR
10	2F8-013-01	CLICK LEAF SPRING HOLDER	44	2A2-088-01	ANTI-REVERSE CAM
11	2W2-015-01	KEY WASHER	45	2Q3-102-01	ANTI-REVERSE SPRING
12	2E3-007-01	ROTOR NUT	46	2YB-216-02	BODY ASSEMBLY
13	2E1-036-01	B26-040 SCREW	47	2Z1-009-05	711-3 BALL BEARING
14	2R1-126-01	ROTOR	48	2B2-103-01	BODY COVER (R)
15	2Q3-108-01	BAIL SPRING	49	2C3-042-01	HANDLE SCREW SLEEVE
16	2R5-150-01	BAIL TRIP LEVER	50	2H6-001-12	HANDLE SCREW CAP
17	2R5-149-01	BAIL PAWL	51	2G3-084-01	OSCILLATING GEAR
18	2R4-168-02	BAIL TRIP COVER	52	2M2-018-01	OSCILLATING CAM
19	2E1-016-02	B26-080 SCREW	53	2M1-061-01	OSCILLATING SLIDER
20	2E2-018-01	B30M-080 SCREW	54	2E5-054-01	OSCILLATING SLIDER RETAINER
21	2R2-053-02	BAIL ARM	55	2E2-009-02	F23M-060 SCREW
22	2C1-034-01	LINE ROLLER COLLAR	56	2E1-045-01	A26-080 SCREW
23	2Z1-012-05	407-2.5 BALL BEARING	57	2G1-069-01	DRIVE GEAR
24	2R6-020-02	LINE ROLLER	58	2W1-035-00	080-105 WASHER
25	2C2-032-01	LINE ROLLER BUSH	59	2Z1-010-05	812-3.5 BALL BEARING
26	2YL-136-01	BAIL ASSEMBLY	60	2B2-102-01	BODY COVER (L)
27	2E1-010-01	b30-100 SCREW	61	2E1-005-02	A26-120 SCREW
28	2R5-135-01	BAIL TRIP SHAFT	62	2YH-237-04	HANDLE TOTAL ASSEMBLY
29	2W1-199-01	015-027 WASHER	63	2A1-026-09	ANTI-REVERSE LEVER
30	2Q1-100-01	BAIL SPRING	64	2E2-013-02	B20M-060 SCREW
31	2C2-113-01	BAIL SPRING GUIDE	65	2F5-363-02	REAR COVER
32	2R4-167-02	BAIL SPRING COVER	66	2E2-055-01	B23M-050 SCREW
33	2M3-123-01	MAIN SHAFT	GA2500(C)	SPECIAL PARTS	
34	2A4-021-01	ONE-WAY CLUTCH INNER TUBE	7	2YT-381-03	SPOOL TOTAL ASSEMBLY