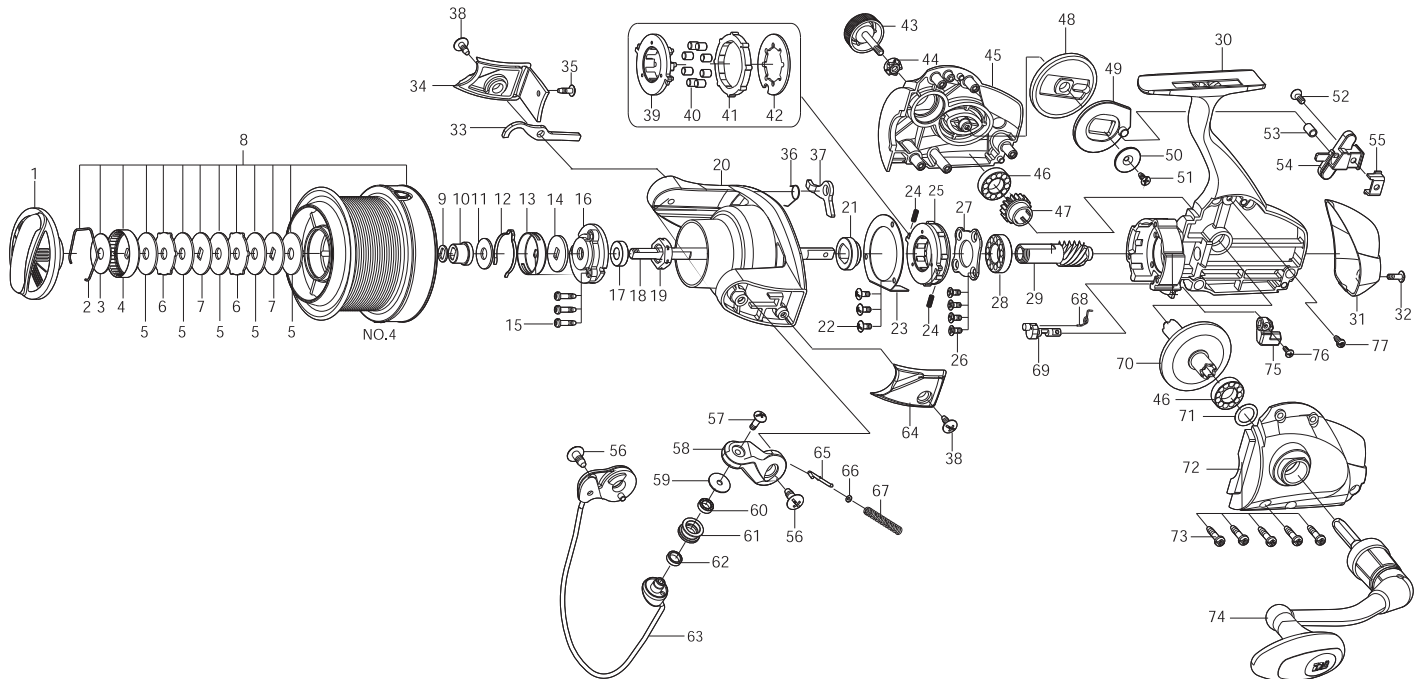




SPINNING REEL

SCEPTER

GX9000

Key
NO.

Parts No.

Parts name

1	2YD-036-06	DRAG KNOB ASSEMBLY
2	2E4-013-01	DRAG WASHER RETAINER
3	2W1-092-01	060-210 WASHER
4	2F3-032-01	DRAG KNOB CLICK NUT
5	2W1-094-01	060-220 WASHER
6	2W3-013-01	EARED WASHER
7	2W2-033-01	KEY WASHER
8	2YT-198-09	SPOOL TOTAL ASSEMBLY
9	2W2-041-01	KEY WASHER
10	2C1-103-01	MAIN SHAFT BUSH
11	2W1-115-01	061-160 WASHER
12	2L3-018-01	CLICK LEAF SPRING
13	2F8-027-02	CLICK LEAF SPRING HOLDER
14	2W2-034-01	KEY WASHER
15	2E1-055-01	A26-100 SCREW
16	2YF-052-01	RETAINER ASSEMBLY
17	2Z1-006-05	613-3.5 BALL BEARING
18	2M3-121-01	MAIN SHAFT
19	2E3-026-01	ROTOR NUT
20	2YR-050-06	ROTOR ASSEMBLY
21	2A4-034-01	ONE-WAY CLUTCH INNER TUBE
22	2E2-029-01	B26M-060 SCREW
23	2F5-196-01	ROLLER CLUTCH RETAINER
24	2Q1-071-01	CAGE SPRING
25	2YZ-015-01	ONE-WAY CLUTCH BEARING ASSEMBLY
26	2E2-014-02	F26M-060 SCREW
27	2F5-178-01	BEARING RETAINER
28	2Z1-008-05	1020-5 BALL BEARING
29	2YB-207-02	BODY ASSEMBLY
30	2F5-336-01	REAR COVER
31	2E2-005-03	B26M-080 SCREW
32	2R5-075-01	BAIL TRIP LEVER A
33	2E1-016-02	B26-080 SCREW
34	2Q3-042-01	BAIL TRIP LEVER SPING
35	2R5-074-01	BAIL TRIP LEVER B
36	2E1-025-01	b30-080 SCREW

Key
NO.

Parts No.

Parts name

39	2F8-084-01	CAGE
40	2Z3-003-01	ROLLER
41	2A3-009-01	ANTI-REVERSE RATCHET
42	2F2-035-01	ANTI-REVERSE PAWL
43	2H6-002-10	HANDLE SCREW CAP
44	2C3-047-01	HANDLE SCREW SLEEVE
45	2B2-092-02	BODY COVER (R)
46	2Z1-035-05	917-5 BALL BEARING
47	2G3-082-01	DRIVE PINION
48	2G3-064-01	OSCILLATING GEAR
49	2M2-011-01	OSCILLATING CAM
50	2W5-062-01	COVER
51	2E1-063-01	F26-070 SCREW
52	2E2-011-02	F30M-080 SCREW
53	2C1-089-01	COLLAR
54	2M1-058-01	OSCILLATING SLIDER
55	2E5-052-01	OSCILLATING SLIDER RETAINER
56	2E1-014-01	B40-100 SCREW
57	2E2-007-01	B30M-100 SCREW
58	2R2-050-02	BAIL ARM
59	2C1-049-01	LINE ROLLER COLLAR
60	2Z1-001-05	508-2.5 BALL BEARING
61	2R6-014-02	LINE ROLLER
62	2C1-068-01	COLLAR
63	2YL-134-02	BAIL ASSEMBLY
64	2R4-089-06	BAIL SPRING COVER
65	2R5-040-01	BAIL TRIP SHAFT
66	2W1-044-01	016-035 WASHER
67	2Q1-024-01	BAIL SPRING
68	2Q3-009-01	ANTI-REVERSE SPRING
69	2A2-071-01	ANTI-REVERSE CAM
71	2W1-014-03	091-130 WASHER
72	2B2-093-02	BODY COVER (L)
73	2E1-006-02	A30-130 SCREW
74	2YH-249-04	HANDLE TOTAL ASSEMBLY