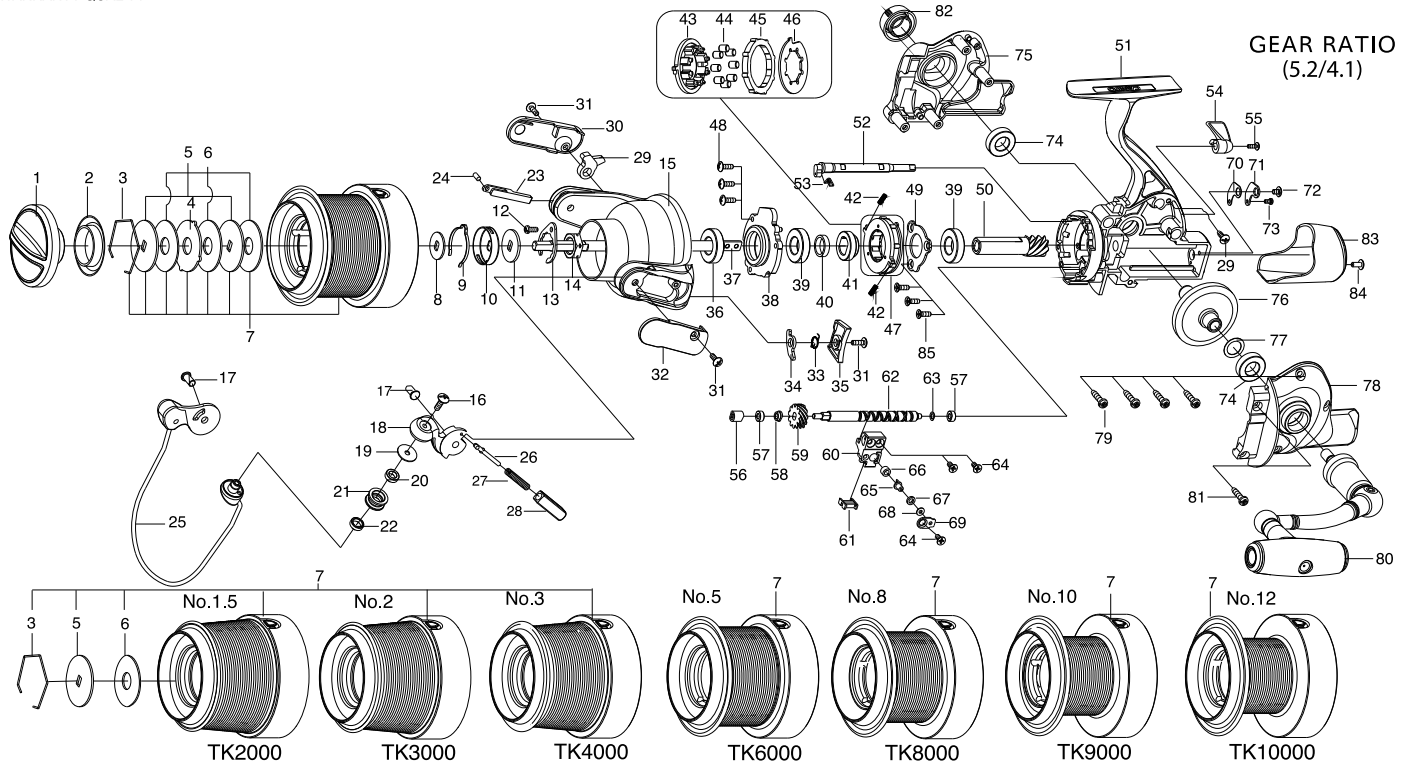




TACTFUL

TK2000 / TK3000 / TK4000 / TK5000 TK6000 / TK8000 / TK9000 / TK10000



Key NO.	Parts No.	Parts name	Key NO.	Parts No.	Parts name
1	2YD-064-02	DRAG KNOB ASSEMBLY	53	2Q3-009-01	ANTI-REVERSE SPRING
2	2E9-015-01	PROOF WATER RING	54	2A1-025-07	ANTI-REVERSE LEVER
3	2E4-003-01	DRAG WASHER RETAINER	55	2E2-013-04	B20M-060 SCREW
4	2W3-027-01	EARED WASHER	56	2C2-101-01	WORM SHAFT BUSH
5	2W2-048-02	KEY WASHER	57	2Z1-014-05	306-2.5 BALL BEARING
6	2W1-175-01	100-300 WASHER	58	2C1-046-01	COLLAR
7	2YT-284-07	SPOOL TOTAL ASSEMBLY	59	2G3-035-01	OSCILLATING GEAR
8	2W2-041-01	KEY WASHER	60	2M1-051-01	OSCILLATING SLIDER
9	2L3-018-01	CLICK LEAF SPRING	61	2E5-045-01	OSCILLATING SLIDER RETAINER
10	2F8-027-02	CLICK LEAF SPRING HOLDER	62	2M4-032-01	WORM SHAFT
11	2W2-034-01	KEY WASHER	63	2W1-058-02	030-050 WASHER
12	2E2-037-01	A26M-060 SCREW	64	2E2-014-02	F26M-060 SCREW
13	2F6-028-01	ROTOR NUT HOLDING PLATE	65	2M5-004-01	LINE PIN
14	2E3-026-01	ROTOR NUT	66	2C2-034-01	LINE GUIDE PIN BUSH
15	2R1-120-01	ROTOR	67	2W1-107-02	030-050 WASHER
16	2E2-007-04	B30M-100 SCREW	68	2W1-059-01	020-049 WASHER
17	2P1-059-01	PIN	69	2F5-296-01	OSCILLATING SLIDER COVER
18	2R2-054-01	BAIL ARM	70	2W5-031-01	WORM SHAFT COVER GASKET
19	2C1-068-01	COLLAR	71	2F5-161-01	WORM SHAFT COVER
20	2Z1-001-05	508-2.5 BALL BEARING	72	2E2-003-01	B26M-036 SCREW
21	2R6-014-02	LINE ROLLER	73	2E2-050-01	A20M-035 SCREW
22	2C1-049-01	LINE ROLLER COLLAR	74	2Z1-035-05	917-5 BALL BEARING
23	2R5-141-01	BAIL PAWL	75	2B2-086-03	BODY COVER (R)
24	2P1-055-01	BAIL TRIP PIN	76	2G1-101-01	DRIVE GEAR
25	2YL-128-01	BAIL ASSEMBLY	77	2W1-014-05	091-130 WASHER
26	2R5-138-01	BAIL TRIP SHAFT	78	2B2-087-03	BODY COVER (L)
27	2Q1-066-01	BAIL SPRING	79	2E1-006-04	A30-130 SCREW
28	2C2-108-01	BAIL SPRING GUIDE	80	2YH-272-01	HANDLE TOTAL ASSEMBLY
29	2R5-139-01	BAIL TRIP LEVER A	81	2E2-036-02	A30M-130 SCREW
30	2R4-156-02	BAIL TRIP COVER	82	2H6-018-03	HANDLE SCREW CAP
31	2E2-005-05	B26M-080 SCREW	83	2F5-323-01	REAR COVER
32	2R4-155-01	BAIL SPRING COVER	84	2E2-029-04	B26M-060 SCREW
33	2Q3-056-01	BAIL TRIP LEVER SPRING	85	2E2-052-01	F26M-080 SCREW
34	2R5-140-01	BAIL TRIP LEVER B	TK2000	SPECIAL PARTS	
35	2F5-329-01	ROTOR COVER	7	2YT-281-07	SPOOL TOTAL ASSEMBLY
36	2E9-026-01	PROOF WATER RING	TK3000	SPECIAL PARTS	
37	2M3-101-01	MAIN SHAFT	7	2YT-282-07	SPOOL TOTAL ASSEMBLY
38	2F8-087-01	BEARING HOLDER	TK4000	SPECIAL PARTS	
39	2Z1-008-05	1020-5 BALL BEARING	7	2YT-283-07	SPOOL TOTAL ASSEMBLY
40	2C1-096-01	COLLAR	TK6000	SPECIAL PARTS	
41	2A4-034-01	ONE-WAY CLUTCH INNER TUBE	7	2YT-285-07	SPOOL TOTAL ASSEMBLY
42	2Q1-071-01	CAGE SPRING	TK8000	SPECIAL PARTS	
43	2F8-084-01	CAGE	7	2YT-286-07	SPOOL TOTAL ASSEMBLY
44	2Z3-003-01	ROLLER	TK9000	SPECIAL PARTS	
45	2A3-009-01	ANTI-REVERSE RATCHET	7	2YT-287-07	SPOOL TOTAL ASSEMBLY
46	2F2-033-01	ANTI-REVERSE PAWL	TK10000	SPECIAL PARTS	
47	2YZ-020-01	ONE-WAY CLUTCH BEARING ASSEMBLY	7	2YT-288-07	SPOOL TOTAL ASSEMBLY
48	2E2-005-03	B26M-080 SCREW	GEAR RATIO 5.2	SPECIAL PARTS	
49	2F5-259-01	BEARING RETAINER	30	2R4-156-01	BAIL TRIP COVER
50	2G2-099-01	PINION GEAR	50	2G2-098-01	PINION GEAR
51	2YB-204-03	BODY COVER	59	2G3-025-01	OSCILLATING GEAR
52	2A2-084-01	ANTI-REVERSE CAM	76	2G1-109-01	DRIVE GEAR