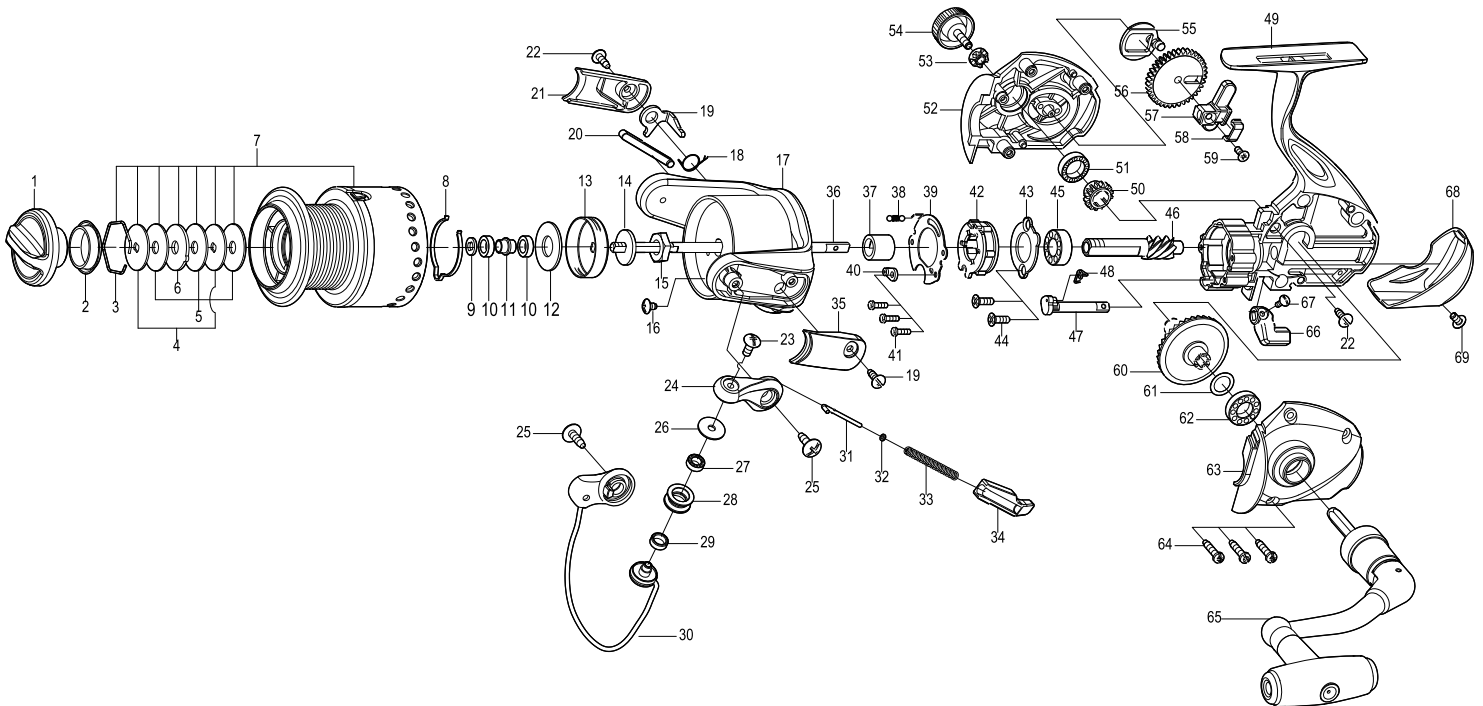




SPINNING REEL

GAINER

GA3000(P) / GA3500(P)



Key NO.	Parts No.	Parts name	Key NO.	Parts No.	Parts name
1	2YD-054-09	DRAG KNOB ASSEMBLY	38	2Q2-016-01	SPRING
2	2E9-019-01	PROOF WATER RING	39	2F5-192-01	ROLLER CLUTCH RETAINER
3	2E4-009-01	DRAG WASHER RETAINER	40	2F8-079-01	ANTI-REVERSE SPRING ANCHOR
4	2W2-013-02	KEY WASHER	41	2E2-047-02	A20M-065 SCREW
5	2W1-052-02	050-187 WASHER	42	2YZ-014-01	ONE-WAY CLUTCH BEARING ASSEMBLY
6	2W3-014-01	EARED WASHER	43	2F5-193-01	BEARING RETAINER
7	2YT-318-51	SPOOL TOTAL ASSEMBLY	44	2E2-052-02	F26M-080 SCREW
8	2L3-015-01	CLICK LEAF SPRING	45	2Z1-003-05	714-5 BALL BEARING
9	2W2-016-01	KEY WASHER	46	2G2-042-01	PINION GEAR
10	2Z1-001-05	508-2.5 BALL BEARING	47	2A2-031-01	ANTI-REVERSE CAM
11	2C1-110-01	COLLAR	48	2Q3-009-01	ANTI-REVERSE SPRING
12	2W1-053-01	080-019 WASHER	49	2YB-219-04	BODY ASSEMBLY
13	2F8-019-02	CLICK LEAF SPRING HOLDER	50	2G3-068-01	DRIVE PINION
14	2W2-015-01	KEY WASHER	51	2Z1-010-05	812-3.5 BALL BEARING
15	2E3-007-01	ROTOR NUT	52	2B2-099-02	BODY COVER (R)
16	2E1-036-01	B26-040 SCREW	53	2C3-042-01	HANDLE SCREW SLEEVE
17	2R1-119-03	ROTOR	54	2H6-001-09	HANDLE SCREW CAP
18	2Q3-108-01	BAIL SPRING	55	2M2-016-01	OSCILLATING CAM
19	2R5-137-01	BAIL TRIP LEVER	56	2G3-081-01	OSCILLATING GEAR
20	2R5-136-01	BAIL PAWL	57	2M1-062-01	OSCILLATING SLIDER
21	2R4-153-03	BAIL TRIP COVER	58	2E5-051-01	OSCILLATING SLIDER RETAINER
22	2E1-016-02	B26-080 SCREW	59	2E2-009-02	F23M-060 SCREW
23	2E2-018-01	B30M-080 SCREW	60	2G1-128-01	DRIVE GEAR
24	2R2-053-03	BAIL ARM	61	2W1-019-00	071-103 WASHER
25	2E1-010-01	b30-100 SCREW	62	2Z1-039-05	713-4 BALL BEARING
26	2C1-034-01	LINE ROLLER COLLAR	63	2B2-098-02	BODY COVER (L)
27	2Z1-012-05	407-2.5 BALL BEARING	64	2E1-005-02	A26-120 SCREW
28	2R6-020-01	LINE ROLLER	65	2YH-335-01	HANDLE TOTAL ASSEMBLY
29	2C2-032-01	LINE ROLLER BUSH	66	2A1-026-14	ANTI-REVERSE LEVER
30	2YL-126-03	BAIL ASSEMBLY	67	2E2-013-02	B20M-060 SCREW
31	2R5-135-01	BAIL TRIP SHAFT	68	2F5-360-03	REAR COVER
32	2W1-199-01	015-027 WASHER	69	2E2-055-01	B23M-050 SCREW
33	2Q1-097-01	BAIL SPRING			
34	2C2-106-01	BAIL SPRING GUIDE	GA3500(P)	SPECIAL PARTS	
35	2R4-154-03	BAIL SPRING COVER	7	2YT-319-51	SPOOL TOTAL ASSEMBLY
36	2M3-120-01	MAIN SHAFT	8	2L3-014-01	CLICK LEAF SPRING
37	2A4-021-01	ONE-WAY CLUTCH INNER TUBE	10	2F8-013-01	CLICK LEAF SPRING HOLDER