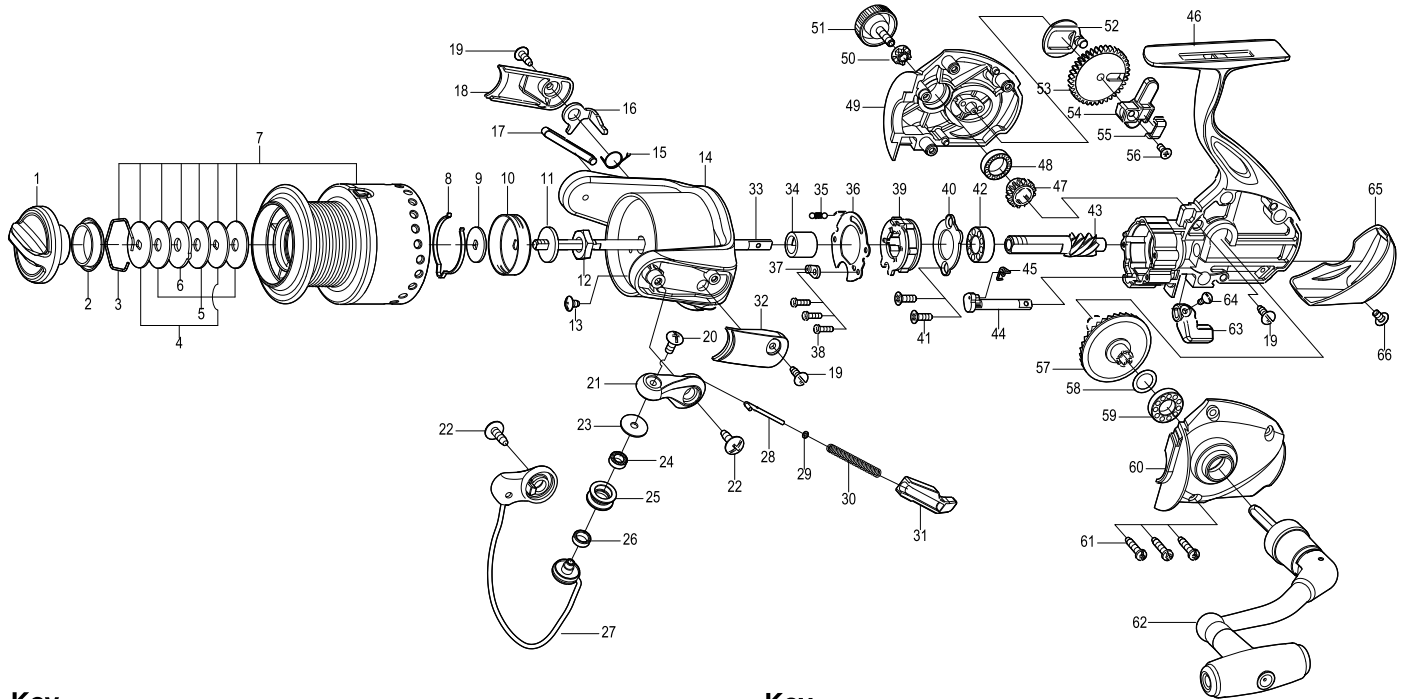




# SPINNING REEL

# GAINER

# GA3000(R) / GA3000(BL) GA3500(R) / GA3500(BL)



Key NO.	Parts No.	Parts name	Key NO.	Parts No.	Parts name
1	2YD-054-10	DRAG KNOB ASSEMBLY	45	2Q3-009-01	ANTI-REVERSE SPRING
2	2E9-019-01	PROOF WATER RING	46	2YB-219-03	BODY ASSEMBLY
3	2E4-009-01	DRAG WASHER RETAINER	47	2G3-068-01	DRIVE PINION
4	2W2-013-02	KEY WASHER	48	2Z1-010-05	812-3.5 BALL BEARING
5	2W1-052-02	050-187 WASHER	49	2B2-099-01	BODY COVER ( R )
6	2W3-014-01	EARED WASHER	50	2C3-042-01	HANDLE SCREW SLEEVE
7	2YT-318-04	SPOOL TOTAL ASSEMBLY	51	2H6-001-13	HANDLE SCREW CAP
8	2L3-015-01	CLICK LEAF SPRING	52	2M2-016-01	OSCILLATING CAM
9	2W2-020-01	KEY WASHER	53	2G3-081-01	OSCILLATING GEAR
10	2F8-019-02	CLICK LEAF SPRING HOLDER	54	2M1-062-01	OSCILLATING SLIDER
11	2W2-015-01	KEY WASHER	55	2E5-051-01	OSCILLATING SLIDER RETAINER
12	2E3-007-01	ROTOR NUT	56	2E2-009-02	F23M-060 SCREW
13	2E1-036-01	B26-040 SCREW	57	2G1-128-01	DRIVE GEAR
14	2R1-119-02	ROTOR	58	2W1-019-00	071-103 WASHER
15	2Q3-108-01	BAIL SPRING	59	2Z1-039-05	713-4 BALL BEARING
16	2R5-137-01	BAIL TRIP LEVER	60	2B2-098-01	BODY COVER ( L )
17	2R5-136-01	BAIL PAWL	61	2E1-005-02	A26-120 SCREW
18	2R4-153-02	BAIL TRIP COVER	62	2YH-335-02	HANDLE TOTAL ASSEMBLY
19	2E1-016-02	B26-080 SCREW	63	2A1-026-09	ANTI-REVERSE LEVER
20	2E2-018-01	B30M-080 SCREW	64	2E2-013-02	B20M-060 SCREW
21	2R2-053-02	BAIL ARM	65	2F5-360-02	REAR COVER
22	2E1-010-01	b30-100 SCREW	66	2E2-055-01	B23M-050 SCREW
23	2C1-034-01	LINE ROLLER COLLAR	GA3000(BL)	SPECIAL PARTS	
24	2Z1-012-05	407-2.5 BALL BEARING	1	2YD-054-11	DRAG KNOB ASSEMBLY
25	2R6-020-02	LINE ROLLER	7	2YT-318-07	SPOOL TOTAL ASSEMBLY
26	2C2-032-01	LINE ROLLER BUSH	18	2R4-153-04	BAIL TRIP COVER
27	2YL-126-02	BAIL ASSEMBLY	32	2R4-154-04	BAIL SPRING COVER
28	2R5-135-01	BAIL TRIP SHAFT	46	2YB-219-01	BODY ASSEMBLY
29	2W1-199-01	015-027 WASHER	62	2YH-354-01	HANDLE TOTAL ASSEMBLY
30	2Q1-097-01	BAIL SPRING	65	2F5-360-04	REAR COVER
31	2C2-106-01	BAIL SPRING GUIDE	GA3500(R)	SPECIAL PARTS	
32	2R4-154-02	BAIL SPRING COVER	7	2YT-319-04	SPOOL TOTAL ASSEMBLY
33	2M3-120-01	MAIN SHAFT	8	2L3-014-01	CLICK LEAF SPRING
34	2A4-021-01	ONE-WAY CLUTCH INNER TUBE	10	2F8-013-01	CLICK LEAF SPRING HOLDER
35	2Q2-016-01	SPRING	GA3500(BL)	SPECIAL PARTS	
36	2F5-192-01	ROLLER CLUTCH RETAINER	1	2YD-054-11	DRAG KNOB ASSEMBLY
37	2F8-079-01	ANTI-REVERSE SPRING ANCHOR	7	2YT-319-07	SPOOL TOTAL ASSEMBLY
38	2E2-047-02	A20M-065 SCREW	8	2L3-014-01	CLICK LEAF SPRING
39	2YZ-014-01	ONE-WAY CLUTCH BEARING ASSEMBLY	10	2F8-013-01	CLICK LEAF SPRING HOLDER
40	2F5-193-01	BEARING RETAINER	18	2R4-153-04	BAIL TRIP COVER
41	2E2-052-02	F26M-080 SCREW	32	2R4-154-04	BAIL SPRING COVER
42	2Z1-003-05	714-5 BALL BEARING	46	2YB-219-01	BODY ASSEMBLY
43	2G2-042-01	PINION GEAR	62	2YH-354-01	HANDLE TOTAL ASSEMBLY
44	2A2-031-01	ANTI-REVERSE CAM	65	2F5-360-04	REAR COVER