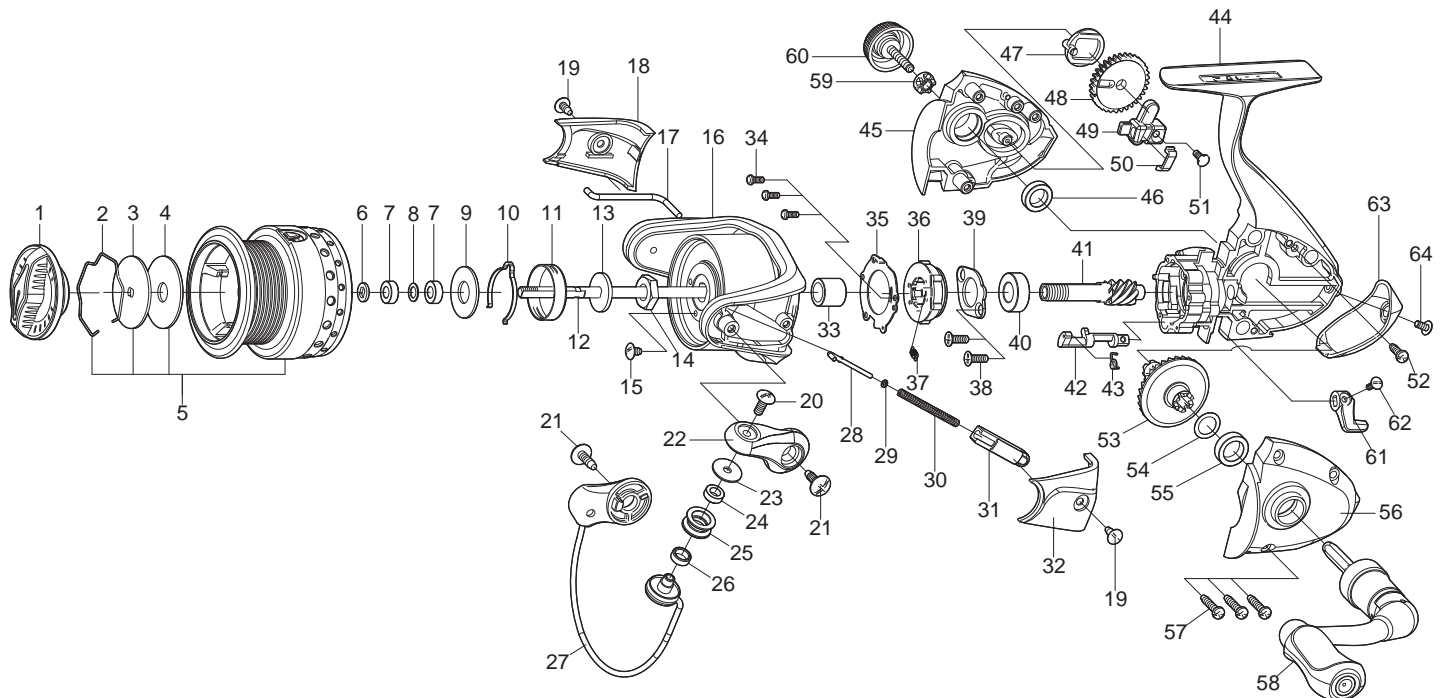




## SPINNING REEL

## DYNASPIN

## GH2000(I) / GH2500(I)



Key NO.	Parts No.	Parts name	Key NO.	Parts No.	Parts name
1	2YD-089-01	DRAG KNOB ASSEMBLY	34	2E2-044-01	A20M-050 SCREW
2	2E4-034-01	DRAG WASHER RETAINER	35	2F5-398-01	ROLLER CLUTCH RETAINER
3	2W2-071-01	KEY WASHER	36	2YZ-023-01	ONE-WAY CLUTCH BEARING ASSEMBLY
4	2W1-226-01	080-260 WASHER	37	2Q2-016-01	SPRING
5	2YT-413-01	SPOOL TOTAL ASSEMBLY	38	2E2-052-02	F26M-080 SCREW
6	2W2-016-01	KEY WASHER	39	2F5-212-01	BEARING RETAINER
7	2Z1-029-05	408-3 BALL BEARING	40	2Z1-003-05	714-5 BALL BEARING
8	2C1-119-01	SPACER	41	2G2-158-01	PINION GEAR
9	2W1-053-01	080-185 WASHER	42	2A2-088-01	ANTI-REVERSE CAM
10	2L3-014-01	CLICK LEAF SPRING	43	2Q3-102-01	ANTI-REVERSE SPRING
11	2F8-013-01	CLICK LEAF SPRING HOLDER	44	2YB-211-03	BODY ASSEMBLY
12	2M3-123-01	MAIN SHAFT	45	2B2-097-04	BODY COVER ( R )
13	2W2-015-01	KEY WASHER	46	2Z1-009-05	711-3 BALL BEARING
14	2E3-007-01	ROTOR NUT	47	2M2-018-01	OSCILLATING CAM
15	2E1-036-01	B26-040 SCREW	48	2G3-084-01	OSCILLATING GEAR
16	2R1-136-01	ROTOR	49	2M1-061-01	OSCILLATING SLIDER
17	2R5-163-01	BAIL PAWL	50	2E5-054-01	OSCILLATING SLIDER RETAINER
18	2R4-182-01	BAIL TRIP COVER	51	2E2-009-02	F23M-060 SCREW
19	2E1-015-04	B26-060 SCREW	52	2E1-045-01	A26-080 SCREW
20	2E2-018-04	B30M-080 SCREW	53	2G1-144-01	DRIVE GEAR
21	2E1-010-04	b30-100 SCREW	54	2W1-019-00	071-103 WASHER
22	2R2-063-01	BAIL ARM	55	2Z1-010-05	812-3.5 BALL BEARING
23	2C1-034-01	LINE ROLLER COLLAR	56	2B2-096-04	BODY COVER ( L )
24	2Z1-012-05	407-2.5 BALL BEARING	57	2E1-005-04	A26-120 SCREW
25	2R6-020-02	LINE ROLLER	58	2YH-237-07	HANDLE TOTAL ASSEMBLY
26	2C2-032-01	LINE ROLLER BUSH	59	2C3-042-01	HANDLE SCREW SLEEVE
27	2YL-155-01	BAIL ASSEMBLY	60	2H6-017-02	HANDLE SCREW CAP
28	2R5-135-01	BAIL TRIP SHAFT	61	2A1-034-02	ANTI-REVERSE LEVER
29	2W1-199-01	015-027 WASHER	62	2E2-013-02	B20M-060 SCREW
30	2Q1-096-01	BAIL SPRING	63	2F5-355-01	REAR COVER
31	2C2-119-01	BAIL SPRING GUIDE	64	2E2-055-02	B23M-050 SCREW
32	2R4-183-01	BAIL SPRING COVER	GH2500(I)	SPECIAL PARTS	
33	2A4-021-01	ONE-WAY CLUTCH INNER TUBE	5	2YT-414-01	SPOOL TOTAL ASSEMBLY