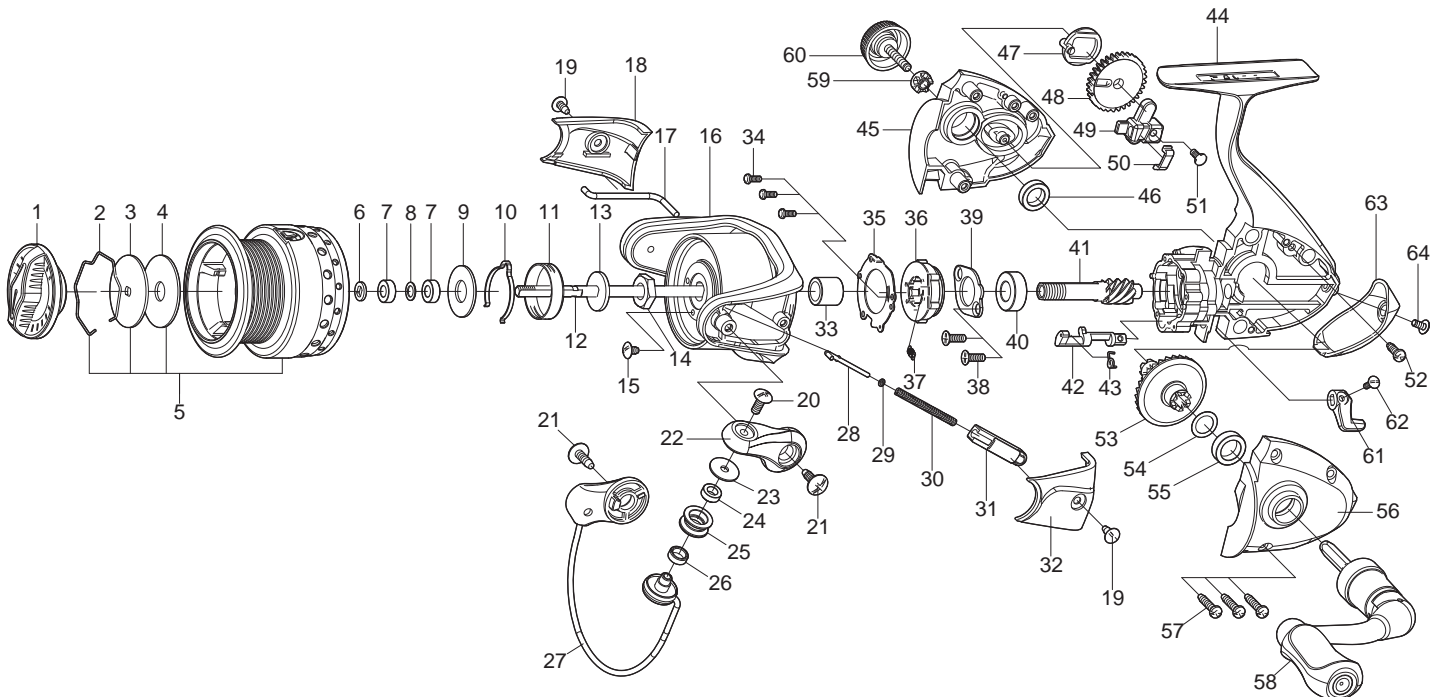




## SPINNING REEL

## DYNASPIN

GH2000(P-G) / GH2000(P-BL)  
GH2500(P-G) / GH2500(P-BL)

Key NO.	Parts No.	Parts name	Key NO.	Parts No.	Parts name
1	2YD-089-02	DRAG KNOB ASSEMBLY	42	2A2-088-01	ANTI-REVERSE CAM
2	2E4-034-01	DRAG WASHER RETAINER	43	2Q3-102-01	ANTI-REVERSE SPRING
3	2W2-071-01	KEY WASHER	44	2YB-211-04	BODY ASSEMBLY
4	2W1-226-01	080-260 WASHER	45	2B2-097-05	BODY COVER ( R )
5	2YT-413-02	SPOOL TOTAL ASSEMBLY	46	2Z1-009-05	711-3 BALL BEARING
6	2W2-016-01	KEY WASHER	47	2M2-018-01	OSCILLATING CAM
7	2Z1-029-05	408-3 BALL BEARING	48	2G3-084-01	OSCILLATING GEAR
8	2C1-119-01	SPACER	49	2M1-061-01	OSCILLATING SLIDER
9	2W1-053-01	080-185 WASHER	50	2E5-054-01	OSCILLATING SLIDER RETAINER
10	2L3-014-01	CLICK LEAF SPRING	51	2E2-009-02	F23M-060 SCREW
11	2F8-013-01	CLICK LEAF SPRING HOLDER	52	2E1-045-01	A26-080 SCREW
12	2M3-123-01	MAIN SHAFT	53	2G1-144-01	DRIVE GEAR
13	2W2-015-01	KEY WASHER	54	2W1-019-00	071-103 WASHER
14	2E3-007-01	ROTOR NUT	55	2Z1-010-05	812-3.5 BALL BEARING
15	2E1-036-01	B26-040 SCREW	56	2B2-096-05	BODY COVER ( L )
16	2R1-136-02	ROTOR	57	2E1-005-02	A26-120 SCREW
17	2R5-163-01	BAIL PAWL	58	2YH-237-07	HANDLE TOTAL ASSEMBLY
18	2R4-182-02	BAIL TRIP COVER	59	2C3-042-01	HANDLE SCREW SLEEVE
19	2E1-015-02	B26-060 SCREW	60	2H6-017-02	HANDLE SCREW CAP
20	2E2-018-03	B30M-080 SCREW	61	2A1-034-03	ANTI-REVERSE LEVER
21	2E1-010-01	b30-100 SCREW	62	2E2-013-02	B20M-060 SCREW
22	2R2-063-02	BAIL ARM	63	2F5-355-02	REAR COVER
23	2C1-034-01	LINE ROLLER COLLAR	64	2E2-055-01	B23M-050 SCREW
24	2Z1-012-05	407-2.5 BALL BEARING			
25	2R6-020-01	LINE ROLLER	GH2000(P-BL)	SPECIAL PARTS	
26	2C2-032-01	LINE ROLLER BUSH	1	2YD-089-03	DRAG KNOB ASSEMBLY
27	2YL-155-02	BAIL ASSEMBLY	5	2YT-413-03	SPOOL TOTAL ASSEMBLY
28	2R5-135-01	BAIL TRIP SHAFT	18	2R4-182-03	BAIL TRIP COVER
29	2W1-199-01	015-027 WASHER	25	2R6-020-02	LINE ROLLER
30	2Q1-096-01	BAIL SPRING	27	2YL-155-03	BAIL ASSEMBLY
31	2C2-119-01	BAIL SPRING GUIDE	32	2R4-183-03	BAIL SPRING COVER
32	2R4-183-02	BAIL SPRING COVER	63	2F5-355-03	REAR COVER
33	2A4-021-01	ONE-WAY CLUTCH INNER TUBE	GH2500(P-G)	SPECIAL PARTS	
34	2E2-044-01	A20M-050 SCREW	5	2YT-414-02	SPOOL TOTAL ASSEMBLY
35	2F5-398-01	ROLLER CLUTCH RETAINER	GH2500(P-BL)	SPECIAL PARTS	
36	2YZ-023-01	ONE-WAY CLUTCH BEARING ASSEMBLY	1	2YD-089-03	DRAG KNOB ASSEMBLY
37	2Q2-016-01	SPRING	5	2YT-414-03	SPOOL TOTAL ASSEMBLY
38	2E2-052-02	F26M-080 SCREW	18	2R4-182-03	BAIL TRIP COVER
39	2F5-212-01	BEARING RETAINER	27	2YL-155-03	BAIL ASSEMBLY
40	2Z1-003-05	714-5 BALL BEARING	32	2R4-183-03	BAIL SPRING COVER
41	2G2-158-01	PINION GEAR	63	2F5-355-03	REAR COVER