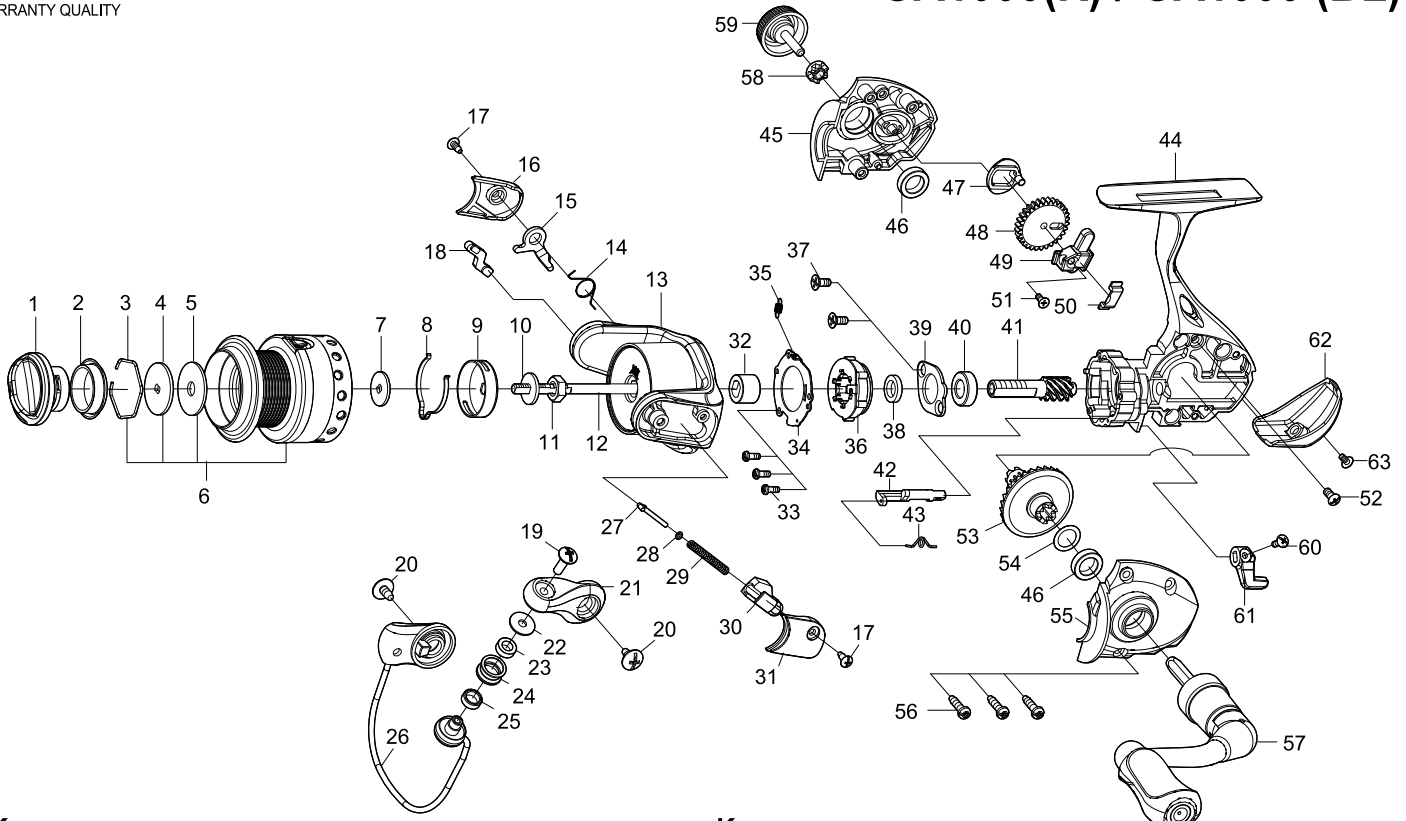




SPINNING REEL *GAINER* GA1000(R) / GA1000 (BL)



Key NO.	Parts No.	Parts name	Key NO.	Parts No.	Parts name
1	2YD-074-08	DRAG KNOB ASSEMBLY	37	2E2-014-01	F26M-060 SCREW
2	2E9-019-01	PROOF WATER RING	38	2C1-090-01	COLLAR
3	2E4-009-01	DRAG WASHER RETAINER	39	2F5-212-01	BEARING RETAINER
4	2W2-057-01	KEY WASHER	40	2Z1-019-05	612-4 BALL BEARING
5	2W1-052-01	050-187 WASHER	41	2G2-161-01	PINION GEAR
6	2YT-439-02	SPOOL TOTAL ASSEMBLY	42	2A2-105-01	ANTI-REVERSE CAM
7	2W2-055-01	KEY WASHER	43	2Q3-102-01	ANTI-REVERSE SPRING
8	2L3-014-01	CLICK LEAF SPRING	44	2YB-231-03	BODY ASSEMBLY
9	2F8-013-03	CLICK LEAF SPRING HOLDER	45	2B2-124-01	BODY COVER (R)
10	2W2-056-01	KEY WASHER	46	2Z1-009-05	711-3 BALL BEARING
11	2E3-062-01	ROTOR NUT	47	2M2-023-01	OSCILLATING CAM
12	2M3-150-01	MAIN SHAFT	48	2G3-091-01	OSCILLATING GEAR
13	2R1-145-01	ROTOR	49	2M1-068-01	OSCILLATING SLIDER
14	2Q3-108-01	BAIL SPRING	50	2E5-060-01	OSCILLATING SLIDER RETAINER
15	2R5-176-01	BAIL TRIP LEVER	51	2E2-030-02	F20M-050 SCREW
16	2R4-200-02	BAIL TRIP COVER	52	2E1-060-01	A26-060 SCREW
17	2E1-020-02	B22-055 SCREW	53	2G1-142-01	DRIVE GEAR
18	2R5-175-01	BAIL PAWL	54	2W1-019-01	071-103 WASHER
19	2E2-018-01	B30M-080 SCREW	55	2B2-125-01	BODY COVER (L)
20	2E1-024-01	b30-060 SCREW	56	2E1-055-01	A26-100 SCREW
21	2R2-068-01	BAIL ARM	57	2YH-384-04	HANDLE TOTAL ASSEMBLY
22	2C1-056-01	LINE ROLLER COLLAR	58	2C3-042-01	HANDLE SCREW SLEEVE
23	2Z1-012-05	407-2.5 BALL BEARING	59	2H6-001-13	HANDLE SCREW CAP
24	2R6-012-02	LINE ROLLER	60	2E2-013-02	B20M-060 SCREW
25	2C2-032-01	LINE ROLLER BUSH	61	2A1-034-08	ANTI-REVERSE LEVER
26	2YL-156-01	BAIL ASSEMBLY	62	2F5-432-02	REAR COVER
27	2R5-165-01	BAIL TRIP SHAFT	63	2E2-092-01	B20M-050 SCREW
28	2W1-199-01	015-027 WASHER			
29	2Q1-117-01	BAIL SPRING	GA1000(BL)	SPECIAL PARTS	
30	2C2-128-01	BAIL SPRING GUIDE	1	2YD-074-09	DRAG DNOB ASSEMBLY
31	2R4-201-02	BAIL SPRING COVER	6	2YT-439-04	SPOOL TOTAL ASSEMBLY
32	2A4-054-01	ONE-WAY CLUTCH INNER TUBE	16	2R4-200-04	BAIL TRIP COVER
33	2E2-044-01	A20M-050 SCREW	31	2R4-201-04	BAIL SPRING COVER
34	2F5-433-01	ROLLER CLUTCH RETAINER	44	2YB-231-01	BODY ASSEMBLY
35	2Q2-016-01	SPRING	57	2YH-384-03	HANDLE TOTAL ASSEMBLY
36	2YZ-023-01	ONE-WAY CLUTCH BEARING ASSEMBLY	62	2F5-432-04	REAR COVER