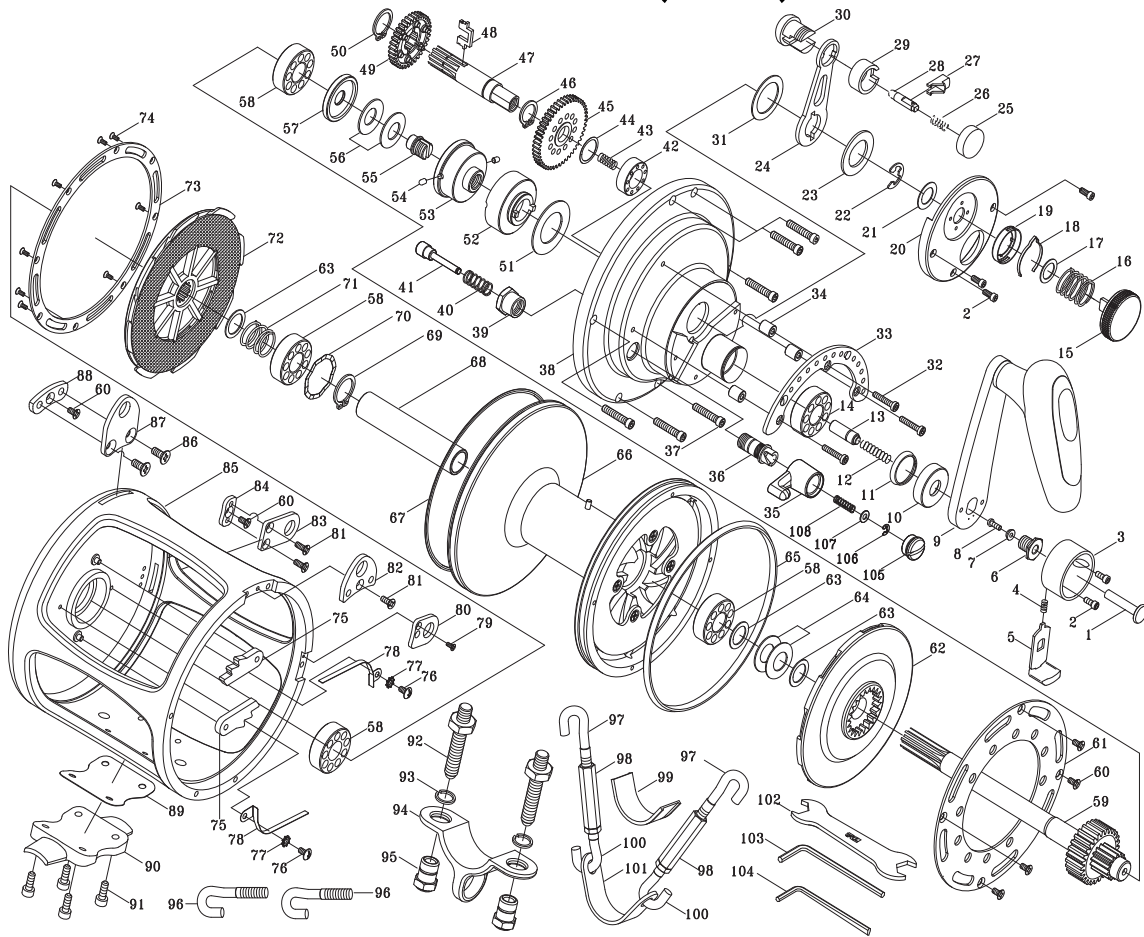


SALTWATER REEL

TICATEAM

80R/WTS
(SILVER)

Please order by parts number, not key number
Bitte, Best.-Nr. angeben (Nicht "key"-nr.)
Veuillez indiquer le numero de la piece (Non "key" no.)



Key NO.	Parts No.	Parts name	Key NO.	Parts No.	Parts name
1	2S3-017-01	LOW SPEED BUTTON SHAFT	55	2E0-018-01	PRESET SCREW
2	2E2-078-01	h30M-070 SCREW	56	2L1-015-01	SPRING WASHER
3	2F8-077-01	VARIABLE SPEED BUTTON STAND	57	2C1-091-01	COLLAR
4	2Q1-074-01	SLIDE PLATE SPRING	58	2Z1-032-05	18102 BALL BEARING
5	2S3-015-01	HI-SPEED SLIDE PLATE	59	2YG-013-01	PINION GEAR ASSEMBLY
6	2E0-021-01	HANDLE BOLT	60	2E2-056-01	F30M-060 SCREW
7	2C1-065-01	BUTTON SHAFT COLLAR	61	2F3-057-01	CLICK GEAR
8	2E2-031-01	A26M-075 SCREW	62	2YD-066-01	BRAKE DISC ASSY(R)
9	2YH-197-02	HANDLE TOTAL ASSEMBLY	63	2W1-184-01	130-168 WASHER
10	2F5-136-01	DRIVE GEAR SHAFT COVER	64	2L1-014-01	SPRING WASHER
11	2E9-012-01	WATER PROOF RING	65	2E9-030-01	WATER PROOF RING A
12	2Q1-086-01	BUTTON SHAFT SPRING	66	2YS-184-02	SPOOL ASSEMBLY
13	2P4-010-01	BUTTON SHAFT SPACER BAR	67	2E9-029-01	WATER PROOF RING B
14	2Z1-034-05	1019-7 BALL BEARING	68	2C1-097-01	SPACER
15	2D1-040-02	PRESET DRAG KNOB	69	2E5-046-01	C13 RETAINER
16	2Q1-087-01	COMPRESSION SPRING	70	2W5-058-01	WAVE WASHER
17	2W1-167-02	102-150 WASHER	71	2Q1-090-01	DEAG SPRING
18	2L3-034-01	CLICK LEAF SPRING	72	2YD-065-01	BRAKE DISC ASSY(L)
19	2F8-074-01	CLICK LEAF SPRING HOLDER	73	2F5-261-01	BRAKE DISC COVER
20	2F5-263-01	FIGHTING LEVER COVER	74	2E2-030-02	F20M-050 SCREW
21	2W1-156-01	105-170 WASHER	75	2A4-066-02	ANTI-REVERSE PAWL
22	2E5-022-01	E8.0 RETAINER	76	2E2-004-01	B30M-060 SCREW
23	2W1-155-01	170-280 WASHER	77	2E8-004-01	STARWASHER
24	2D4-017-01	DRAG LEVER	78	2L5-016-01	PAWL SPRING
25	2F5-120-02	BUTTON CAP	79	2E2-068-02	F20M-065 SCREW
26	2Q1-028-01	BUSH BUTTON SPRING	80	2F6-081-01	HARNES LUG (R)
27	2S3-014-01	PUSH BUTTON	81	2E2-065-01	F30M-100 SCREW
28	2YP-004-01	CLICK PIN ASSEMBLY	82	2F6-083-01	HARNES LUG(R)
29	2C1-112-01	SPACER	83	2F6-080-01	HARNES LUG (L)
30	2F8-112-01	CLICK HOLD	84	2W5-049-01	HARNES LUG(L) SPACER
31	2W1-096-01	197-280 WASHER	85	2YB-159-03	BODY ASSEMBLY
32	2E2-077-01	h30M-160 SCREW	86	2E2-063-01	F40M-100 SCREW
33	2F5-262-01	DRAG LEVER QUADRANT	87	2F6-059-01	HARNES LUG (L)
34	2C1-073-01	QUADRANT SPACER	88	2W5-038-01	HARNES LUG(L) SPACER
35	2F7-009-01	CLICK SWITCH	89	2W5-054-01	STAND GASKET
36	2C1-098-02	CLICK TONGUE BUSHING	90	2F8-089-01	STAND
37	2E2-076-01	h40M-200 SCREW	91	2E2-062-01	H40M-110 SCREW
38	2YF-099-03	RIGHT SIDE COVER ASSEMBLY	92	2E0-040-01	CLAMP SCREW
39	2E3-038-01	CLICK BUSHING NUT	93	2E4-029-01	RETAINER
40	2Q1-063-01	CLICK BUTTON SPRING	94	2F6-084-01	ROD CLAMP
41	2P1-062-04	CLICK PIN	95	2E3-052-01	ROD CLAMP NUT
42	2Z1-037-05	1221-7 BALL BEARING	96	2E2-070-01	SHORT HOOK SCREW (L.H.)
43	2Q1-061-01	YOKE SPRING	97	2E2-069-02	LONG HOOK SCREW (L.H.)
44	2W1-128-01	121-150 WASHER	98	2E3-059-01	TURNBUCKLE
45	2G1-078-01	DRIVE GEAR A	99	2W5-061-01	ROD GASKET
46	2E5-024-01	C12 RETAINER	100	2E2-069-01	LONG HOOK SCREW (R.H.)
47	2M3-089-01	DRIVE SHAFT	101	2F6-085-01	ROD BRACE
48	2A2-062-01	YOKE	102	2X3-006-01	WRENCH
49	2YG-014-01	DRIVE GEAR (B) ASSEMBLY	103	2X3-007-01	HEX WRENCH
50	2E5-033-01	C15 RETAINER	104	2X3-009-01	HEX WRENCH
51	2W1-185-01	197-344 WASHER	105	2F5-335-01	CLICK SWITCH COVER
52	2A2-074-01	DRAG CAM	106	2E5-006-01	E2.5 RETAINER
53	2F8-088-01	BEARING HOLDER	107	2W1-204-01	034-065 WASHER
54	2P1-018-01	DRAG CAM PIN	108	2Q1-102-01	CLICK PLUNGER SPRING