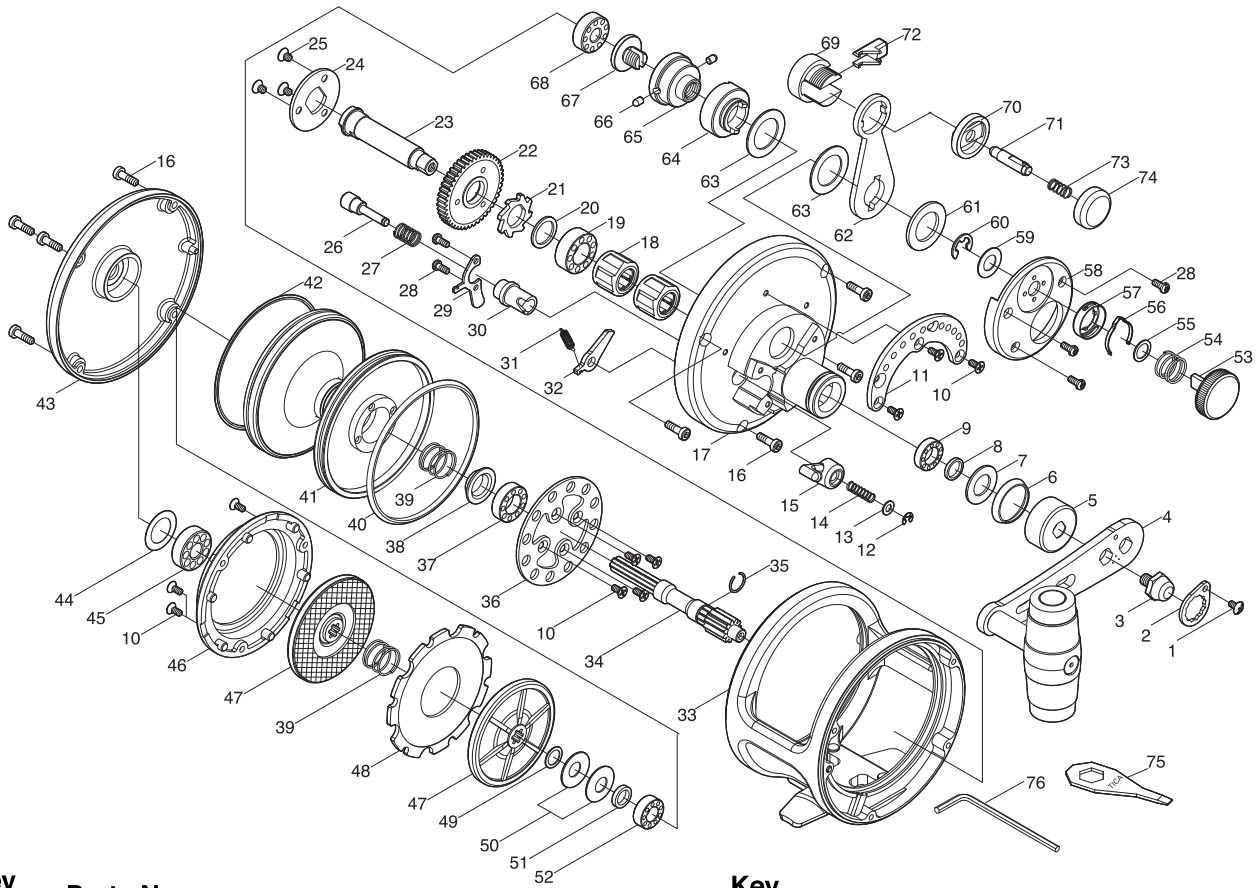




# SALTWATER REEL TICA TEAM ST368RH (GOLDEN SERIES)



Key No.	Parts No.	Parts Name	Key No.	Parts No.	Parts Name
1	2E2-006-01	B26M-050 SCREW	42	2E9-024-01	WATER PROOF RING A
2	2F6-043-01	ROTOR NUT HOLDING PLATE	43	2YF-111-24	LEFT SIDE COVER ASSEMBLY
3	2E3-053-01	HANDLENUT	44	2W1-163-01	120-188 WASHER
4	2YH-066-01	HANDLE TOTAL ASSEMBLY	45	2Z1-025-05	719-6 BALL BEARING
5	2F5-062-01	DRIVE GEAR SHAFT COVER	46	2F5-345-01	BRAKE DISC COVER
6	2E9-006-01	O RING	47	2YD-079-01	BRAKE DISC ASSEMBLY
7	2W1-154-01	101-180 WASHER	48	2W5-072-01	DRAG PLATE
8	2C1-075-01	COLLAR	49	2W1-078-01	072-100 WASHER
9	2Z1-023-05	814-4 BALL BEARING	50	2L1-006-01	SPRING WASHER
10	2E2-014-02	F26M-060 SCREW	51	2C1-072-01	COLLAR
11	2F5-066-01	DRAG LEVER QUADRANT	52	2Z1-003-05	714-5 BALL BEARING
12	2E5-006-01	E2.5 RETAINER	53	2D1-031-01	PRESET DRAG KNOB
13	2W1-204-01	034-065 WASHER	54	2Q1-089-01	COMPRESSION SPRING
14	2Q1-102-01	CLICK PLUNGER SPRING	55	2W1-182-01	071-100 WASHER
15	2F7-005-01	CLICK SWITCH	56	2L3-035-01	CLICK LEAF SPRING
16	2E2-064-01	H30M-100 SCREW	57	2F8-085-01	CLICK LEAF SPRING HOLDER
17	2YF-110-01	RIGHT SIDE COVER ASSEMBLY	58	2F5-121-01	FIGHTING LEVER COVER
18	2YZ-007-01	ONE-WAY CLUTCH BEARING ASSEMBLY	59	2W1-077-01	075-140 WASHER
19	2Z1-034-05	1019-7 BALL BEARING	60	2E5-018-01	E6.0 RETAINER
20	2W1-152-01	111-146 WASHER	61	2W1-153-01	140-226 WASHER
21	2A3-022-01	RATCHET	62	2D4-013-01	DRAG LEVER
22	2G1-127-01	DRIVE GEAR	63	2W1-074-01	147-226 WASHER
23	2M3-035-01	GEAR SHAFT	64	2A2-022-01	DRAG CAM
24	2F6-039-01	COUPLING PLATE	65	2F8-017-01	BEARING HOLDER
25	2E2-058-01	F30M-045 SCREW	66	2P1-018-01	DRAG CAM PIN
26	2P1-062-01	CLICK PLUNGER	67	2E0-017-01	PRESET SCREW
27	2Q1-078-01	CLICK BUTTON SPRING	68	2Z1-036-05	617-6 BALL BEARING
28	2E2-037-01	A26M-060 SCREW	69	2F8-112-01	CLICK HOLD
29	2F6-038-01	HOLDING PLATE	70	2C1-112-01	SPACER
30	2C1-054-01	CLICK PIN BUSHING	71	2YP-004-01	CLICK PIN ASSEMBLY
31	2Q2-009-01	CLICK PAWL SPRING	72	2S3-014-01	PUSH BUTTON
32	2A4-049-01	ANTI-REVERSE PAWL	73	2Q1-028-01	BUSH BUTTON SPRING
33	2YB-210-09	BODY ASSEMBLY	74	2F5-120-01	BUTTON CAP
34	2G2-140-01	PINION GEAR	75	2X3-004-02	WRENCH
35	2E4-025-01	BEARING RETAINER	76	2X3-009-01	HEX WRENCH
36	2F3-028-01	CLICK PLATE	<b>ST368RH(GOLDEN) SPECIAL PARTS</b>		
37	2Z1-035-05	917-5 BALL BEARING	2	2F6-043-02	ROTOR NUT HOLDING PLATE
38	2C1-050-01	PRESSURE RELEASE SPRING COLLAR	4	2YH-066-02	HANDLE TOTAL ASSEMBLY
39	2Q1-068-01	DRAG SPRING	17	2YF-110-02	RIGHT SIDE COVER ASSEMBLY
40	2E9-025-01	WATER PROOF RING B	33	2YB-210-10	BODY ASSEMBLY
41	2S1-307-01	SPOOL	43	2YF-111-25	LEFT SIDE COVER ASSEMBLY