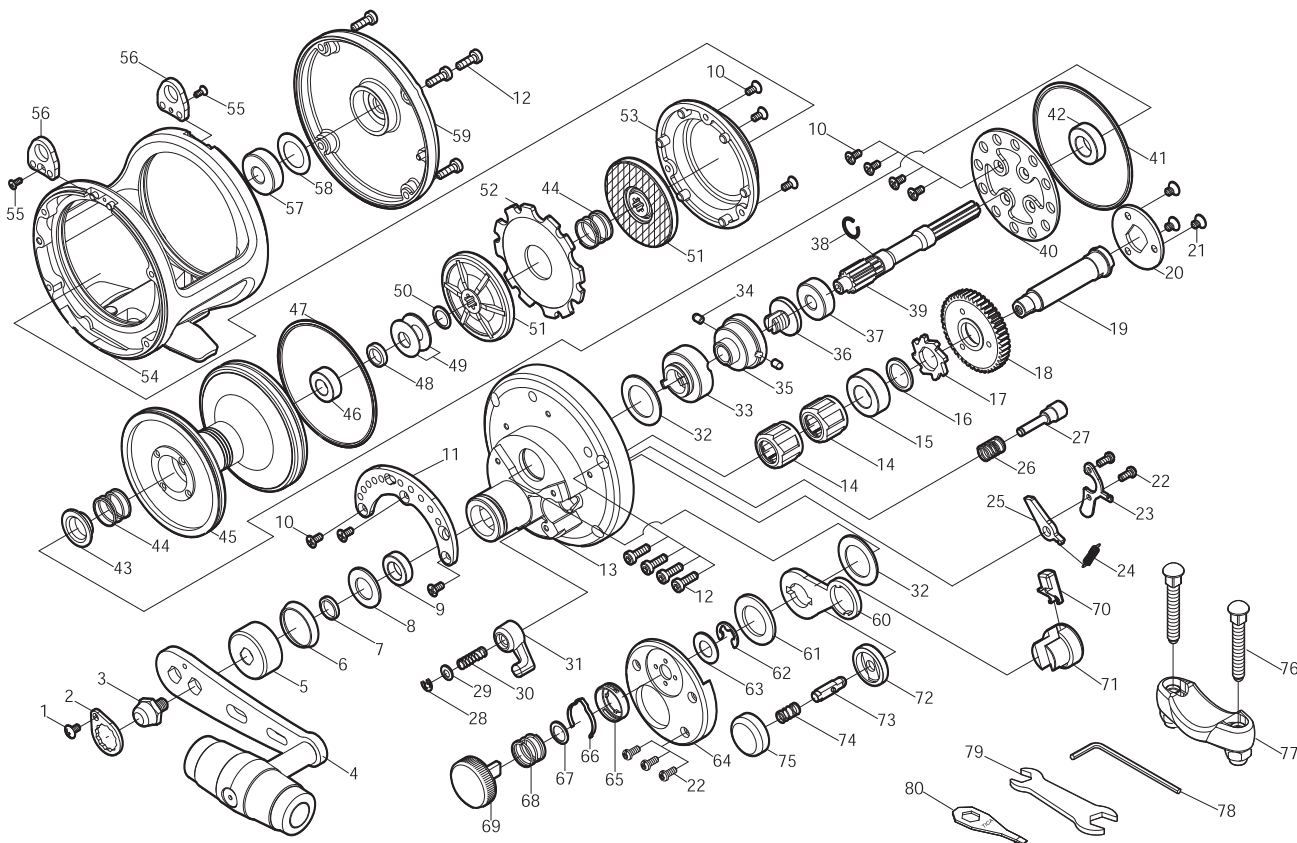




SALTWATER REEL **TICA TEAM** **STL368 / STL468 / STL568 / STL668**



Key No.	Parts No.	Parts Name	Key No.	Parts No.	Parts Name
1	2E2-006-01	B26M-050 SCREW	49	2L1-006-01	SPRING WASHER
2	2F6-043-01	ROTOR NUT HOLDING PLATE	50	2W1-078-01	072-100 WASHER
3	2E3-053-01	HANDLE NUT	51	2YD-079-01	BRAKE DISC ASSEMBLY
4	2YH-317-01	HANDLE ASSEMBLY	52	2W5-072-01	DRAG PLATE
5	2F5-062-01	DRIVE GEAR SHAFT COVER	53	2F5-345-01	BRAKE DISC COVER
6	2E9-006-01	O RING	54	2YB-210-12	BODY ASSEMBLY
7	2C1-075-01	COLLAR	55	2E2-030-02	F20M-050 SCREW
8	2W1-154-01	101-180 WASHER	56	2F6-103-01	HARNES LUG
9	2Z1-023-05	814-4 BALL BEARING	57	2Z1-025-05	719-6 BALL BEARING
10	2E2-014-02	F26M-060 SCREW	58	2W1-163-01	120-188 WASHER
11	2F5-395-01	DRAG LEVER QUADRANT	59	2YF-111-35	RIGHT SIDE COVER ASSEMBLY
12	2E2-064-01	H30M-100 SCREW	60	2D4-013-01	DRAG LEVER
13	2YF-162-01	LEFT SIDE COVER ASSEMBLY	61	2W1-153-01	140-226 WASHER
14	2YZ-007-01	ONE-WAY CLUTCH BEARING ASSEMBLY	62	2E5-018-01	E6.0 RETAINER
15	2Z1-034-05	1019-7 BALL BEARING	63	2W1-077-01	075-140 WASHER
16	2W1-152-01	111-146 WASHER	64	2F5-393-01	FIGHTING LEVER COVER
17	2A3-022-01	RATCHET	65	2F8-085-01	CLICK LEAF SPRING HOLDER
18	2G1-076-01	DRIVE GEAR	66	2L3-035-01	CLICK LEAF SPRING
19	2M3-035-01	GEAR SHAFT	67	2W1-182-01	071-100 WASHER
20	2F6-039-01	COUPLING PLATE	68	2Q1-089-01	COMPRESSION SPRING
21	2E2-058-01	F30M-045 SCREW	69	2D1-031-01	PRESET DRAG KNOB
22	2E2-037-01	A26M-060 SCREW	70	2S3-014-01	PUSH BUTTON
23	2F6-038-01	HOLDING PLATE	71	2F8-112-01	CLICK HOLD
24	2Q2-009-01	CLICK PAWL SPRING	72	2C1-112-01	SPACER
25	2A4-049-01	ANTI-REVERSE PAWL	73	2YP-004-01	CLICK PIN ASSEMBLY
26	2Q1-102-01	CLICK PLUNGER SPRING	74	2Q1-028-01	BUSH BUTTON SPRING
27	2P1-062-01	CLICK PLUNGER	75	2F5-120-01	BUTTON CAP
28	2E5-006-01	E2.5 RETAINER	76	2E2-081-03	X50M-310 SCERW
29	2W1-204-01	034-065 WASHER	77	2YF-138-01	ROD CLAMP ASSEMBLY
30	2Q1-078-01	CLICK BUTTON SPRING	78	2X3-009-01	HEX WRENCH
31	2F7-005-01	CLICK SWITCH	79	2X3-010-01	WRENCH
32	2W1-074-01	147-226 WASHER	80	2X3-004-02	WRENCH
33	2A2-093-01	DRAG CAM	STL468	SPECIAL PARTS	
34	2P1-018-01	DRAG CAM PIN	39	2G2-105-01	PINION GEAR
35	2F8-017-02	BEARING HOLDER	45	2S1-259-02	SPOOL
36	2E0-017-02	PRESET SCREW	54	2YB-171-20	BODY ASSEMBLY
37	2Z1-036-05	617-6 BALL BEARING	59	2YF-111-37	RIGHT SIDE COVER ASSEMBLY
38	2E4-025-01	BEARING RETAINER	STL568	SPECIAL PARTS	
39	2G2-127-01	PINION GEAR	39	2G2-089-01	PINION GEAR
40	2F3-028-01	CLICK PLATE	45	2S1-215-02	SPOOL
41	2E9-025-01	WATER PROOF RING B	54	2YB-172-09	BODY ASSEMBLY
42	2Z1-035-05	917-5 BALL BEARING	59	2YF-111-39	RIGHT SIDE COVER ASSEMBLY
43	2C1-050-01	PRESSURE RELEASE SPRING COLLAR	STL668	SPECIAL PARTS	
44	2Q1-068-01	DRAG SPRING	39	2G2-106-01	PINION GEAR
45	2S1-307-01	SPOOL	45	2S1-263-02	SPOOL
46	2Z1-003-05	714-5 BALL BEARING	54	2YB-193-08	BODY ASSEMBLY
47	2E9-024-01	WATER PROOF RING A	59	2YF-111-41	RIGHT SIDE COVER ASSEMBLY
48	2C1-072-01	COLLAR			