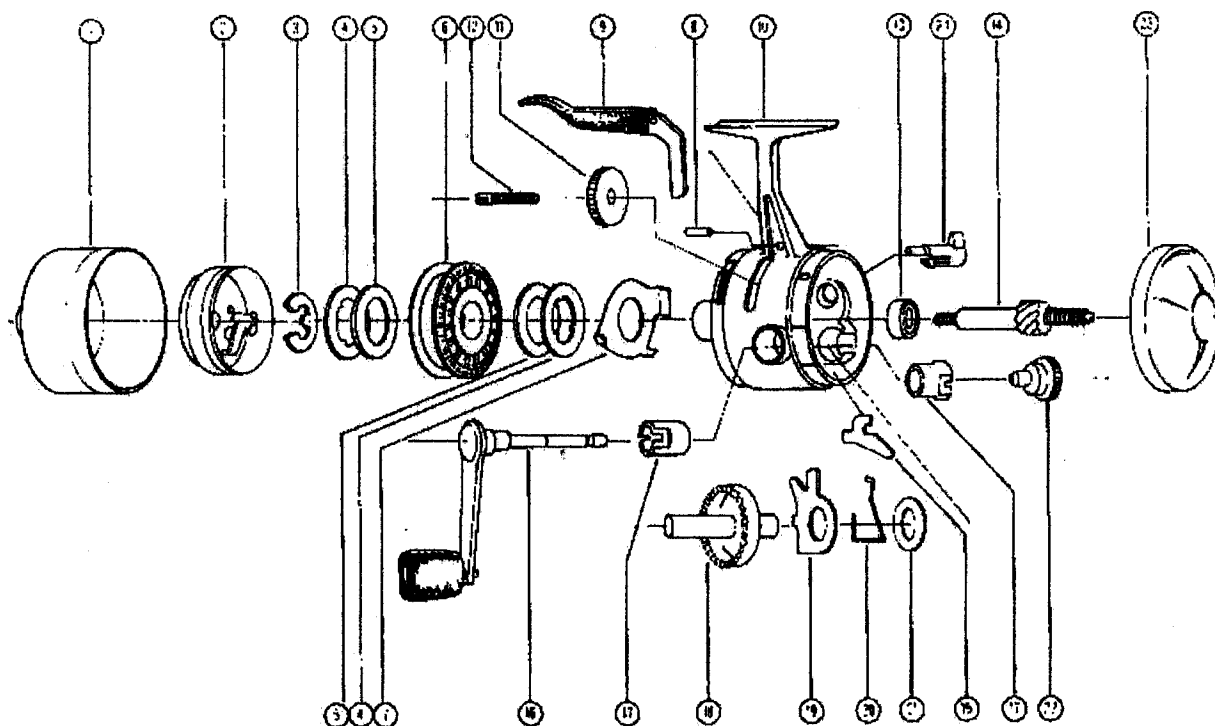


## 44 CLASSIC DIAGRAM



## 44 CLASSIC PARTS LIST

Key No.	Part No.	Description	Key No.	Part No.	Description
1	JY324-11	Front Cover Assy.	13	AZ030	Ball Bearing
2	JY310-2	Spinnerhead	14	KJ315	Center Shaft Assy.
3	GZ034-1	Spool Retainer Clip	15	HJ060	Anti-Reverse Pawl
4	JY040	Spool Washer (metal)	16	KJ318	Crank Handle Assy.
5	JY108	Drag Washer (plastic)	17	CJ026	Crank Shaft Bushing
6	JY321-8H	Spool w/8# H.P. Line	18	CJ012-3	Crank Gear
7	KJ027	Clutch Ring	19	CJ014	Anti-Reverse Drag
8	CJ172-3	Finger Brake Pin	20	CJ061	Anti-Reverse Pawl Spring
9	KJ350	Finger Brake Assy.	21	CJ106	Washer
10	KJ301	Body Assy.	22	KJ068	Handle Nut
11	KJ032	Clutch Wheel	23	KJ323	Back Cover
12	BJ054-2	Clutch Screw	24	RY002	Anti-Reverse Knob

Should clutch ring (7) drop out while changing spool be sure to put longest flange in head of clutch screw (12) to reassemble.