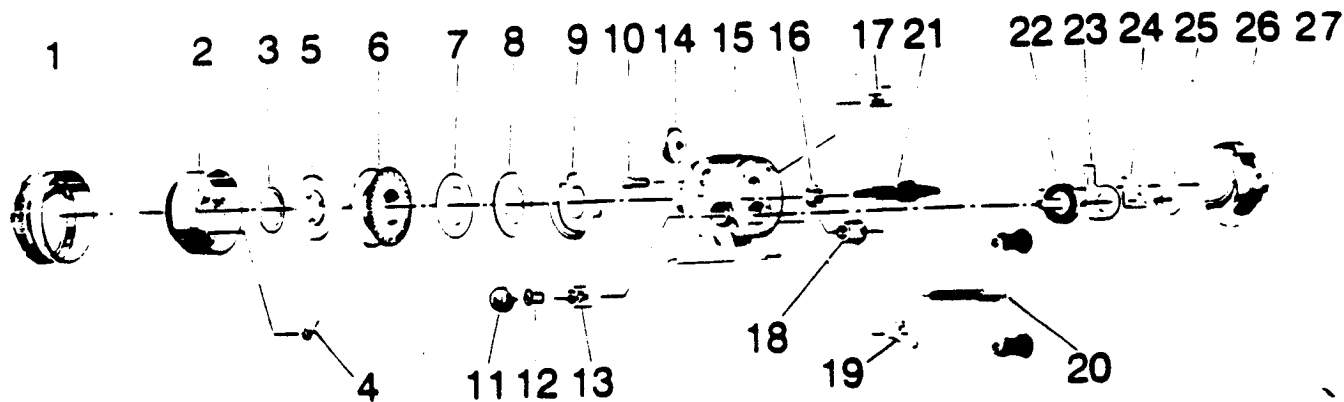


# ZEBCO UL3 CLASSIC



| KEY PART NO. NO. | DESCRIPTION               | PRICE |
|------------------|---------------------------|-------|
| 1 BE324-1        | FRONT COVER               | 4.02  |
| 2 BE310          | SPINNERHEAD S/A           | 4.41  |
| 3 XZ034          | SPOOL CLIP                | .29   |
| 4 AJ049          | PICK UP PIN SPRING        | .29   |
| 5 BE036          | LIP                       | 1.14  |
| 6 BE021          | SPOOL                     | 1.61  |
| 6 BE321-4M       | WOUND SPOOL 48 MONO HI PF | 4.24  |
| 7 SJ108          | FLAT WASHER               | .36   |
| 8 BJ040          | SPOOL WASHER              | .52   |
| 9 BJ027          | CLUTCH RING               | 1.27  |
| 10 BJ054-2       | CLUTCH SCREW              | .62   |
| 11 BE074         | CLOSURE CAP               | .39   |
| 12 BJ069         | CRANK ROD NUT             | .75   |
| 13 BJ026         | CRANK BEARING             | 1.14  |
| 14 BJ032         | CLUTCH WHEEL              | .80   |
| 15 BE301-1       | BODY W/ (10,14-17)        | 9.63  |
| 16 BJ017         | BALL BEARING              | 5.51  |
| 17 BE002         | ANTI-REVERSE ACTUATOR     | 1.03  |
| 18 BJ026         | CRANK BEARING             | 1.14  |
| 19 BJ060         | ANTI-REV PAWL             | .85   |
| 20 BE318-1       | CRANK HANDLE S/A          | 4.41  |
| 21 BE319         | CENTERSHAFT S/A           | 4.02  |
| 22 BJ012         | CRANK GEAR                | 1.95  |
| 23 BJ014         | ANTI-REVERSE DRAG         | .80   |
| 24 BE061         | ANTI-REVERSE PAWL SPRING  | .58   |
| 25 BJ106         | FLAT WASHER               | .29   |
| 26 BE323-1       | BACK COVER                | 4.02  |
| 27 BE009         | THUMBSTOP-                | 1.14  |

Should clutch ring (9) drop out while changing spool, be sure to put largest flange in head of clutch screw (10) to reassemble

Prices subject to change without notice. Prices do not include postage and handling.

**PLEASE ORDER BY PART NUMBER**

Rev. 11/90

Zebco Division Brunswick Corporation, Box 270, Tulsa, OK 74101 USA 918-638-6681

