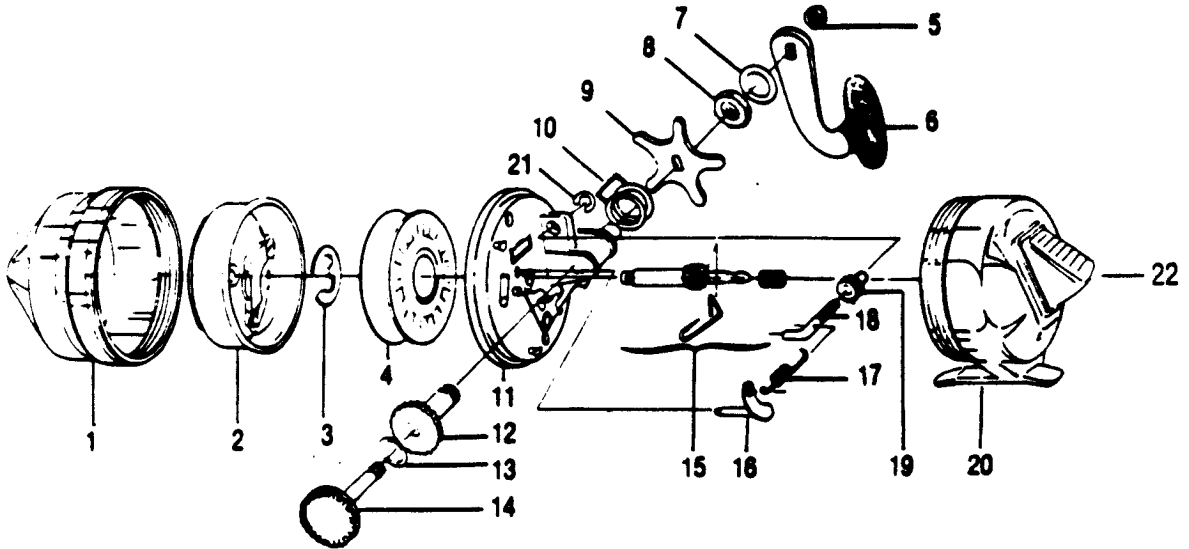


# ZEBCO 888N



KEY PART NO.	DESCRIPTION	PRICE
1 FE324-2	FRONT COVER S/A	6.02
2 EE310-1	SPINNERHEAD ASSY.	6.03
3 G2034-1	SPOOL RETAINER CLIP	.52
4 FE021	SPOOL (EMPTY)	4.06
4 FE321-1	SPOOL W/250 HI PERF LINE	6.03
5 Q2003	CRANK NUT	.67
6 PY318-4	CRANK HANDLE S/A	3.30
7 FE086-1	CRANK SHAFT SPACER	.82
8 PY087-1	CRANK BUSHING NUT	.58
9 PY032-1	DRAG ADJ. STAR	1.24
10 M2088-1	O-RING	.46
11 PY301-2	BODY ASSY.	4.69
12 PY326-2	CRANK BUSHING	4.12
13 P2070-1	THRUST WASHER	.25
14 P2308-2	CRANK SHAFT ASSY.	4.47
15 FE315-1	CENTER SHAFT ASSY.	3.45
16 PY307-1	CLUTCH SHAFT	1.55
17 M2085-1	CLUTCH SPRING	.52
18 M2032-1	CLUTCH SCREW	.57
19 M2086	CLUTCH PINION	.57
20 EE323-3	BACK COVER S/A	5.51
21 M2089-1	RETAINING CLIP	.46
22 PY009	THUMB STOP	.98

Prices subject to change without notice. Prices do not include postage and handling.

**PLEASE ORDER BY PART NUMBER**

Rev. 11/90

Zebco Division Brunswick Corporation, Box 270, Tulsa, OK 74101 USA 918-638-6681

