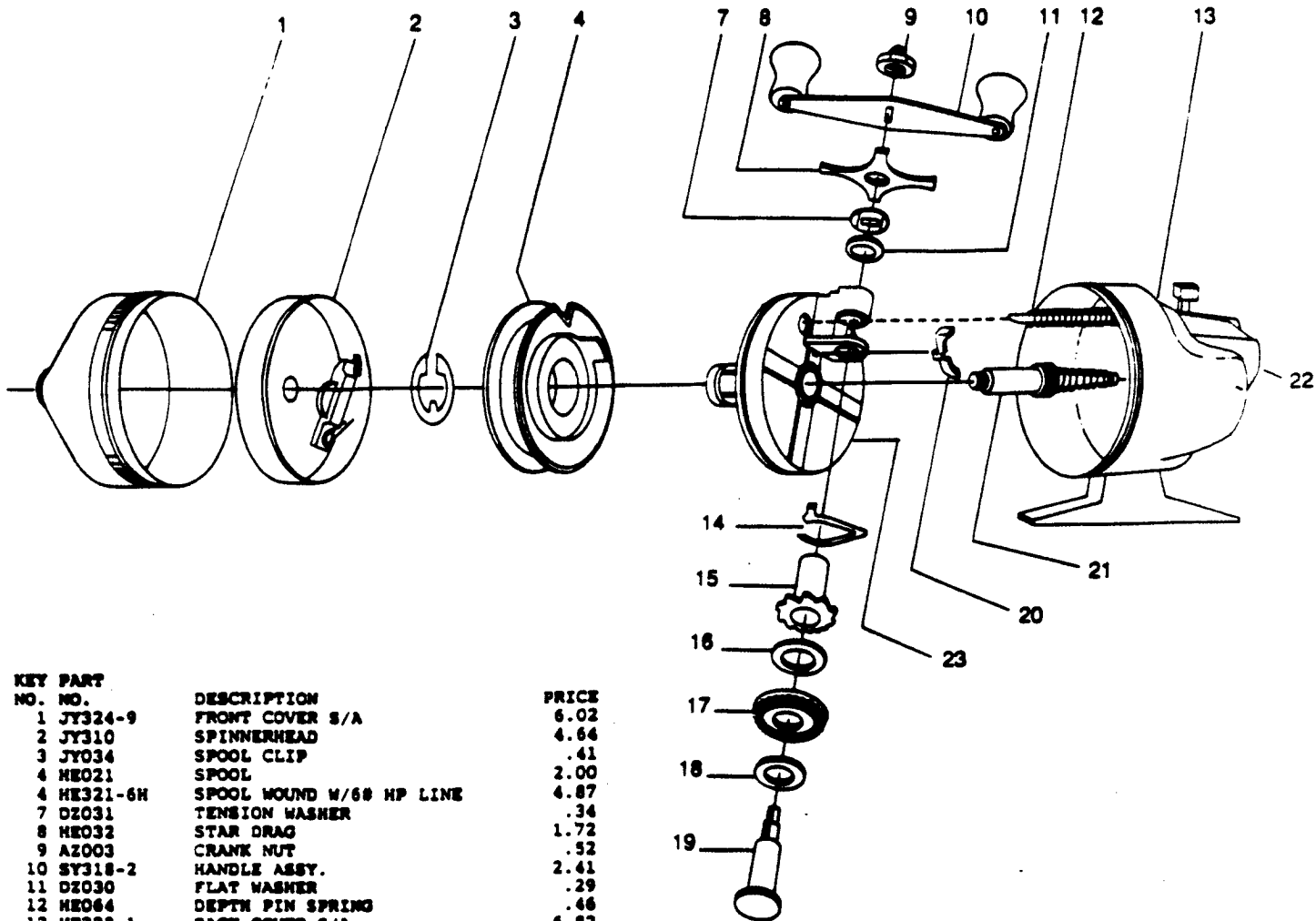


ZEBCO CR60 Crappie Reel



KEY PART NO. NO.	DESCRIPTION	PRICE
1 JY324-9	FRONT COVER S/A	6.02
2 JY310	SPINNERHEAD	4.64
3 JY034	SPOOL CLIP	.41
4 HE021	SPOOL	2.00
4 HE321-6H	SPOOL WOUND W/60 HP LINE	4.87
7 D2031	TENSION WASHER	.34
8 HE032	STAR DRAG	1.72
9 AZ003	CRANK NUT	.52
10 SY318-2	HANDLE ASSY.	2.41
11 D2030	FLAT WASHER	.29
12 HE064	DEPTH PIN SPRING	.46
13 HE323-1	BACK COVER S/A	6.82
14 HE061	ANTI REVERSE DRAG	.89
15 HE026	SIDE BUSHING	1.14
16 D2033	WASHER	.29
17 HE012	CRANK GEAR	1.43
18 D2033	WASHER	.29
19 HE008	CRANK SHAFT	2.24
20 JY060	ANTI-REVERSE PAWL	.41
21 WY315-1	CENTER SHAFT ASSY.	4.12
22 HE009	THUMBSTOP	1.83
23 WY301-2	BODY	5.61

Prices subject to change without notice. Prices do not include postage and handling.

PLEASE ORDER BY PART NUMBER

Rev. 11/90

Zebco Division Brunswick Corporation, Box 270, Tulsa, OK 74101 USA 918-636-6681

