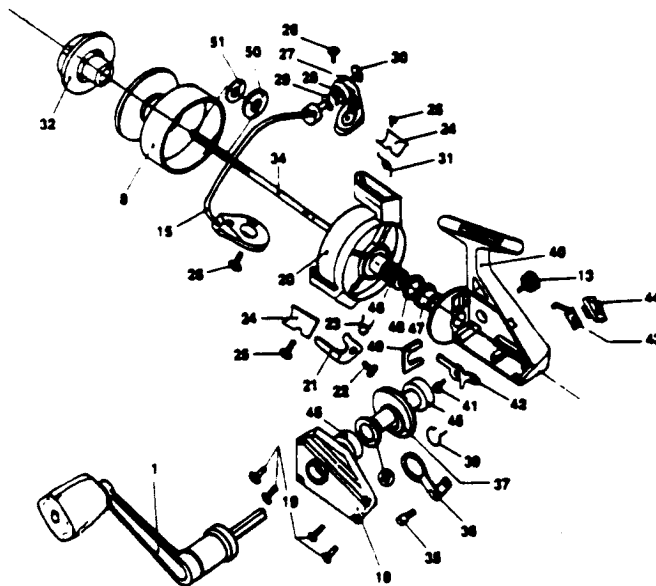


ZEBCO ZX60



KEY PART

NO.	DESCRIPTION	PRICE
1	HANDLE ASSY.	6.38
8	SPOOL	5.89
13	HANDLE SCREW CAP	.91
15	BAIL ASSY.	4.18
18	SIDE PLATE	3.16
19	SIDE PLATE SCREW	.37
20	ROTOR	4.23
21	STOP LEVER	1.71
22	STOP LEVER SCREW	.54
23	STOP LEVER SPRING	.85
24	ROTOR COVER	1.87
25	ROTOR COVER SCREW	.37
26	ANGLE LEVER SCREW	.59
27	ANGLE LEVER	1.66
28	LINE ROLLER WASHER	.54
29	LINE ROLLER	.97
30	LINE ROLLER SCREW	.37
31	TURNING SPRING	.91
32	DRAG KNOB ASSY.	1.87
34	MAIN SHAFT ASSY.	1.87
35	OSCILLATOR SLIDER PIN	.70
36	OSCILLATOR SLIDER ARM	1.56
37	DRIVE GEAR	3.48
38	DRIVE GEAR WASHER	.54
39	DRIVE GEAR SPRING	.80
40	BODY ASSY.	6.43
41	ANTI-REVERSE PAWL SCREW	.54
42	ANTI-REVERSE PAWL	1.29
43	ANTI-REVERSE SPRING	1.44
44	ANTI-REVERSE LEVER	.70
45	SIDE PLATE BUSHING	.70
46	PINION GEAR	1.87
47	PINION GEAR BUSHING	.85
48	PINION GEAR WASHER	.54
49	ROTOR HOLDING PLATE	.54
50	CLICK	.85
51	CLICK WASHER	.59

Prices subject to change without notice. Prices do not include postage and handling.

PLEASE ORDER BY PART NUMBER

Rev. 11/90

Zebco Division Brunswick Corporation, Box 270, Tulsa, OK 74101 USA 918-638-6681

