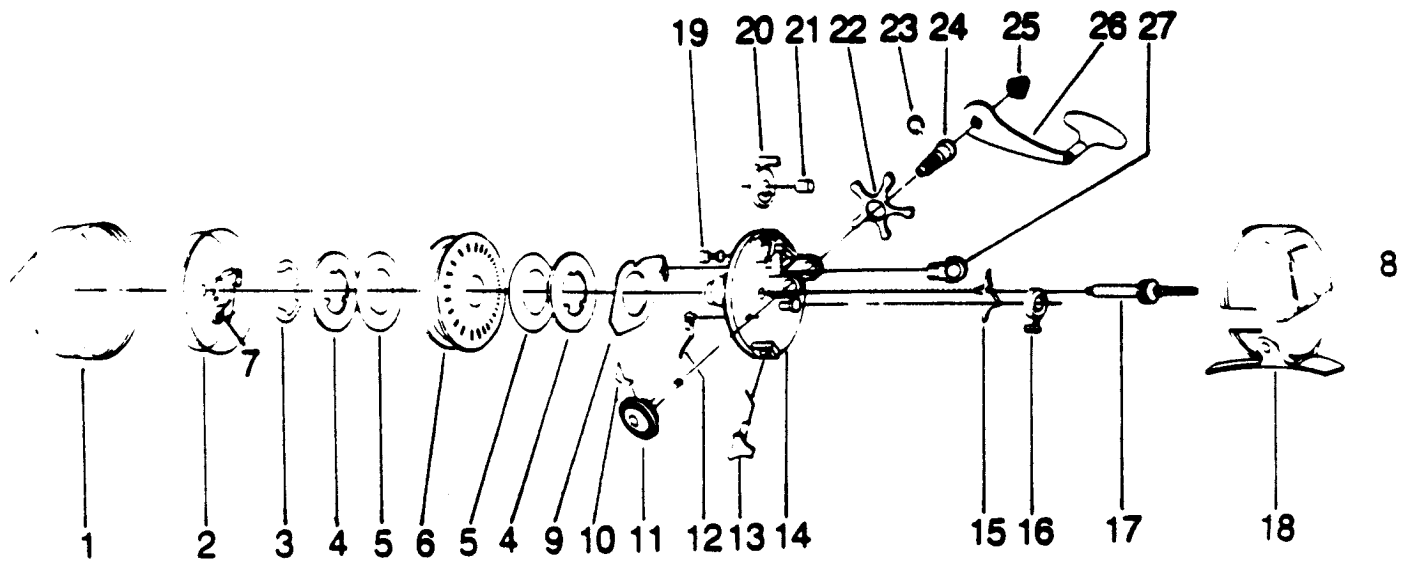


ZEBCO ~~pro staff~~™ 888 (PowerLever Drag)



KEY PART NO. NO.	DESCRIPTION	PRICE
1 FE324-1	FRONT COVER S/A	6.02
2 EE310-1	SPINNERHEAD ASSY.	6.03
3 GZ034-1	SPOOL RETAINER CLIP	.52
4 CJO40-1	SPOOL WASHER (METAL)	.88
5 EE108	SPOOL WASHER	.34
6 EE021	SPOOL	3.90
6 EE321-25H	WOUND SPOOL W/258 MONO HI	6.02
7 PZO49	PICK-UP PIN SPRING	.39
8 PY009	THUMB STOP	.98
9 FE027	CLUTCH RING	2.41
10 EE052	ANTI-REVERSE DRAG	.34
11 EE308	CRANK SHAFT ASSY.	4.47
12 RYO33	RATCHET SPRING	.39
13 EE014	BAIT CLICKER	1.27
14 EE301	808/888 BODY S/A	4.71
15 EE063	ANTI-REVERSE PAWL	.46
16 EE002	A/R ACTUATOR	.63
17 EE315	CENTER SHAFT S/A	3.44
18 EE323-2	BACK COVER S/A	5.44
19 FE090	SPOOL LOCK PISTON	.85
20 FE164	SPOOL LOCK LEVER	.39
21 FE103	POWER LEVER LOCK PIN	.52
22 FE032	DRAG STAR	1.27
23 EE121	RETAINER CLIP	.46
24 FE026	CRANK SHAFT BUSHING	.85
25 QZ003	CRANK NUT	.67
26 PY318-4	CRANK HANDLE S/A	3.30
27 FE054	SLIDE ACTUATOR	.85

Prices subject to change without notice. Prices do not include postage and handling.

PLEASE ORDER BY PART NUMBER

Rev. 11/90

Zebco Division Brunswick Corporation, Box 270, Tulsa, OK 74101 USA 918-639-8881

