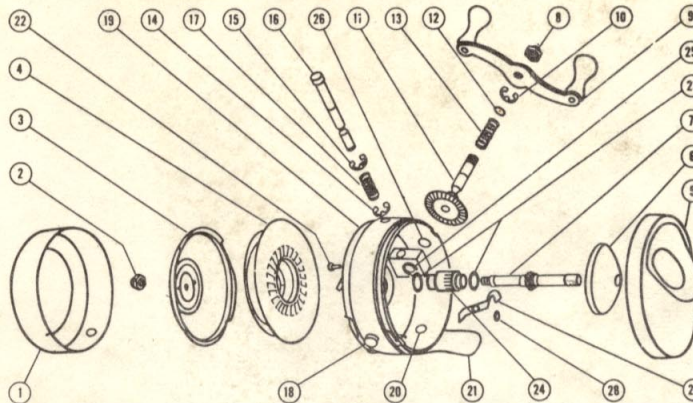


**ZEBCO PARTS LIST AND ORDER BLANK
MODEL 11 CASTING REEL**

Canadian Prices 25% Higher



IF REQUIRED REPAIRS CANNOT BE MADE AT YOUR NEAREST FACTORY APPROVED SERVICE STATION, YOU MAY ORDER THE FOLLOWING REPLACEMENT PARTS DIRECT FROM THE FACTORY OR RETURN REEL TO FACTORY.

Your Order No. _____ Date _____
Charge To _____ Ship To _____
Address _____ Address _____
City & State _____ City & State _____

DEFECTIVE PARTS REPLACED AT FACTORY ONLY

REF. NO.	DESCRIPTION	PART NO.	QUANTITY	PRICE	EXTENSION
1	Front Cover	KZ-24-A		\$1.50	
2	Spinner Head Nut	BZ-6		.15	
3	Spinner Head	BZ-10		2.00	
4	Spool (Empty)	BZ-21		.80	
5	Back Cover	KZ-23		1.25	
6	Thumb Stop	BZ-9		.35	
7	Spinner Shaft	BZ-15-1		1.75	
8	Crank Nut	BZ-3		.15	
9	Crank Handle	BZ-18-A		1.00	
10	Retainer Clip	BZ-29	5 for	.10	
11	Crank Shaft Assy.	BZ-8-1		1.75	
12	Washer	BZ-30	5 for	.10	
13	Crank Shaft Spring	BZ-20		.05	
14	Retainer Clip (See ref. No. 10)	BZ-29			
15	Retainer Clip (See Ref. No. 10)	BZ-29			
16	Release Shaft	BZ-7		.35	
17	Release Spring	BZ-19		.05	
18	Click Knob	BZ-2		.15	
19	Body Assembly	KZ-1-A		4.50	
20	Rod Mount Rivet	BZ-28		.05	
21	Rod Mount	BZ-22		.25	
22	Spool latch, spring & screw	KZ-31-34-40		.25	
23	Center Bushing Washer	BZ-38		.05	
24	* Center Bushing	BZ-17			
25	* Crank Shaft Bearing	BZ-27			
26	* Flange Bearing	BZ-26			
27	Click Spring	BZ-14		.15	
28	Brass Washer	BZ-25	6 for	.10	

* Installed at factory only.

EXTRA SPOOLS OF LINE FOR MODEL 11

Spool with 4-lb. test line	BZ-21-4		\$2.10	
Spool with 6-lb. test line	BZ-21-6		2.10	
Spool with 8-lb. test line	BZ-21-8		2.10	
Spool with 10-lb. test line	BZ-21-10		2.10	
Spool with 12-lb. test line	BZ-21-12		2.10	
Spool with 15-lb. test line	BZ-21-15		2.10	

Amount _____

Less _____

Please send this amount _____