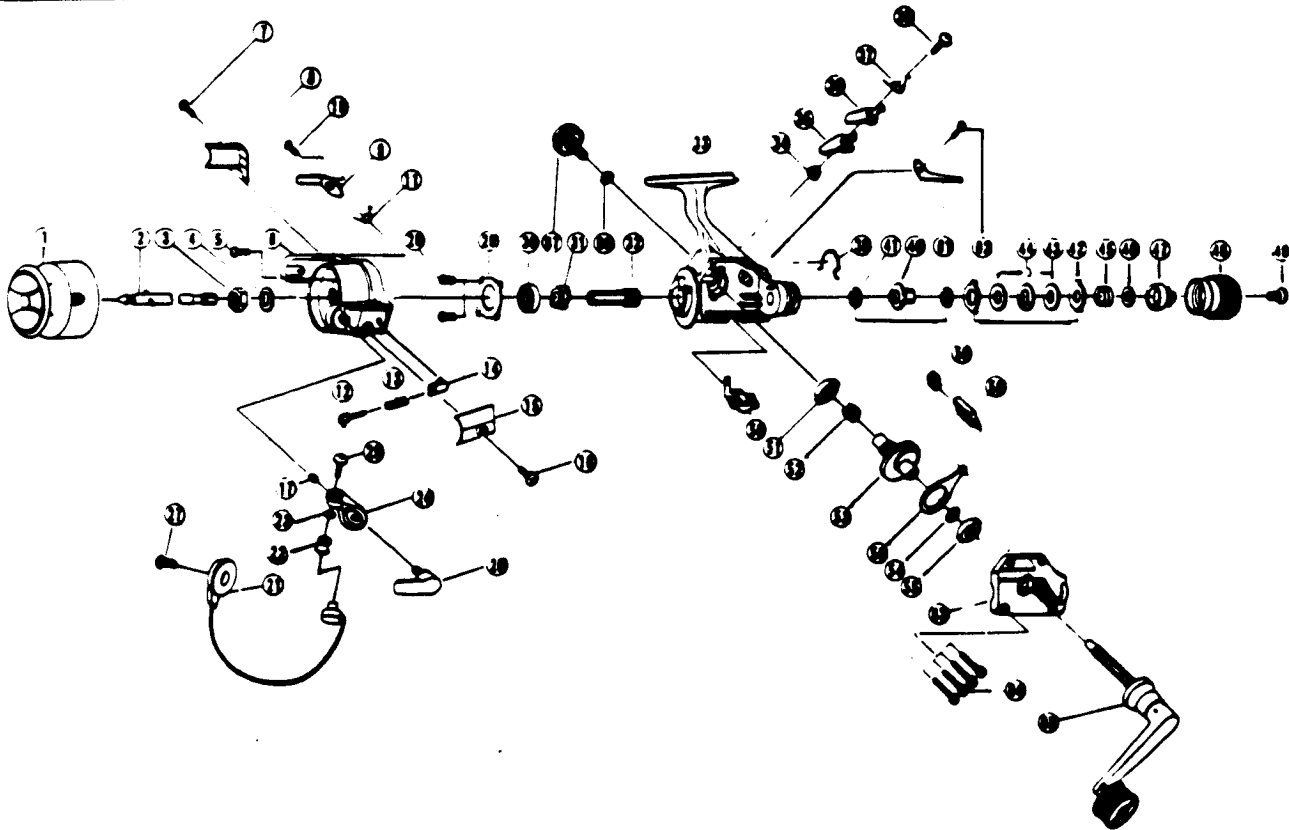


# ZEBCO PS05



KEY PART NO. NO.	DESCRIPTION	PRICE
1 RL321	SPOOL ASSY.	5.25
2 RL315	MAIN SHAFT ASSY.	2.58
3 RLO06	ROTOR NUT	1.29
4 RLO65	ROTOR 'D' WASHER	.62
5 RLO94	ROTOR NUT LOCK SCREW	.62
6 RLO09	ROTOR	3.19
7 RLO85	COVER/CLICK CLAM SCREW	.62
8 RLO24	KICK LEVER COVER	.52
9 RLO19	KICK LEVER	1.13
10 RLO37	KICK LEVER SCREW	.57
11 RLO49	KICK LEVER SPRING	.57
12 RLO31	SPRING SHAFT	.62
13 RLO22	BAIL SPRING	.62
14 RLO20	SPRING HOLDER	.52
15 RLO87	BAIL SPRING COVER	.52
16 RLO85	COVER/CLICK CLAM SCREW	.62
17 RLO34	E-CLIP	.62
20 RL115	TRIP LEVER	1.49
21 RL347	BAIL ASSY.	5.87
22 RLO04	LINE ROLLER	1.60
23 RLO17	BAIL COLLAR	1.13
24 RLO07	ARM LEVER	1.13
25 RL108	BAIL SCREW	.62
27 RLO51	BAIL HOLDER SCREW	.62
28 RLO80	BEARING PLATE SCREW	.62
29 RLO40	BEARING PLATE	.62
30 RLO28	BALL BEARING	7.67
31 RLO60	RATCHET GEAR	2.01
32 RLO11	PINION GEAR	5.15
33 RLO01	BODY	6.18
34 RLO91	STOPPER BUSHING	.57
35 RLO64	STOPPER 'A'	.57
36 RLO63	STOPPER 'B'	1.13

KEY PART NO. NO.	DESCRIPTION	PRICE
37 RLO61	STOPPER SPRING	1.13
38 RLO83	STOPPER SCREW	.62
39 RLO33	DRAG CLICK CLAW METAL	1.13
40 RLO75	DRAG 'B' WASHER - 1	.62
41 RLO38	DRAG 'A' WASHER	.62
42 RLO30	DRAG 'B' WASHER - 2	.62
43 RLO39	DRAG 'D' WASHER	.62
44 RLO66	DRAG COIL SPRING	.52
45 RLO43	DRAG ADJUSTING WASHER	.52
46 RLO46	DRAG NUT	.67
47 RLO29	DRAG CAP	2.68
48 RLO32	DRAG CAP SCREW	.57
49 RLO79	STOPPER LEVER	.57
50 RLO59	BODY/BODY COVER BUSHING	.62
51 RLO13	SILENT CAM	.62
52 RLO86	DRIVE GEAR	3.24
53 RLO12	DRIVE GEAR ADJ. WASHER	.52
54 RLO26	BODY/BODY COVER BUSHING	.62
55 RLO13	O/S SLIDER	1.55
56 RLO25	SLIDER PIN	1.13
58 RLO81	CLICK CLAW	.62
61 RLO68	COVER/CLICK CLAM SCREW	.62
62 RLO85	BODY COVER	2.99
63 RLO23	BODY COVER SCREW	.62
64 RLO57	HANDLE ASSY.	5.15
65 RL318	HANDLE SCREW CAP WASHER	.52
66 RLO76	HANDLE SCREW CAP	1.29
67 RLO73	KICK LEVER GUIDE	.88
68 RLO82		

Prices subject to change without notice. Prices do not include postage and handling.

**PLEASE ORDER BY PART NUMBER**

Rev. 11/90

Zebco Division Brunswick Corporation, Box 270, Tulsa, OK 74101 USA 918-636-6681

**BC**  
BRUNSWICK