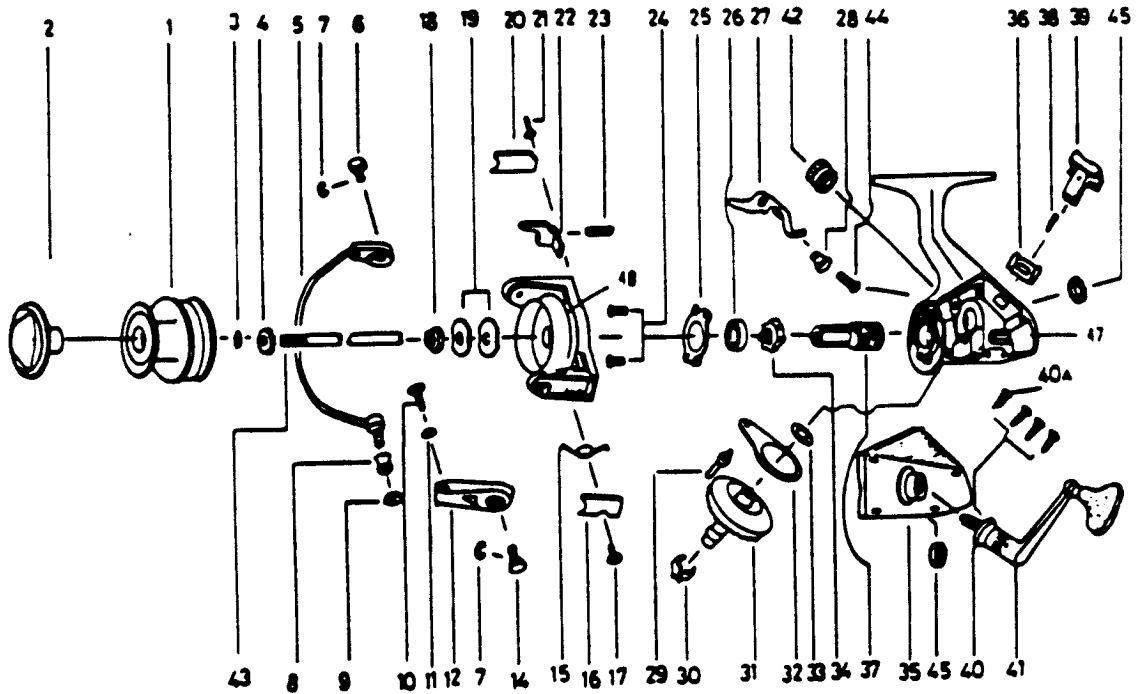


ZEBCO PS2



| KEY PART NO. NO. | DESCRIPTION | PRICE | KEY PART NO. NO. | DESCRIPTION | PRICE |
|------------------|---------------------------|-------|------------------|----------------------------|-------|
| 1 | WL321 SPOOL ASSY. | 5.25 | 26 | LK028 BEARING | 9.59 |
| 2 | MK050 DRAG KNOB ASSY. | 4.02 | 27 | LK063 ANTI-REVERSE CLAW | 1.39 |
| 3 | LK030 SPOOL ADJ. WASHER | .64 | 28 | NS014 A/R CLAW BUSHING | .72 |
| 4 | LK066 CLICK GEAR | .85 | 29 | NS081 OSC. SLIDER PIN | 2.09 |
| 5 | NS347 BAIL ARM ASSY. | 4.02 | 30 | NS086 SLIDING SPRING | .85 |
| 6 | NS044 BAIL HOLDER PIN | 1.14 | 31 | NS012 DRIVE GEAR | 4.87 |
| 7 | NS002 E-CLIP | .29 | 32 | NS025 OSCILLATING SLIDER | 2.98 |
| 8 | LK004 LINE ROLLER | 2.41 | 33 | NS026 DRIVE GEAR ADJ. WSKR | .46 |
| 9 | NS017 BAIL COLLAR | 1.14 | 34 | NS060 RATCHET GEAR | 2.87 |
| 10 | NS108 BAIL SCREW | .58 | 35 | WL023 BODY COVER | 5.25 |
| 11 | NS102 BAIL WASHER | .29 | 36 | NS090 A/R LVR. PLATE SPR. | 1.14 |
| 12 | NS007 ARM LEVER | 1.14 | 37 | LK011 PINION GEAR | 4.55 |
| 14 | NS043 ARM LEVER PIN | 1.32 | 38 | NS091 A/R LVR. PIN | .46 |
| 15 | NS022 BAIL SPRING | .92 | 39 | NS059 ANTI-REVERSE LEVER | .92 |
| 16 | NS087 BAIL SPRING COVER | 1.03 | 40 | LK057 BODY COVER SCREW | .91 |
| 17 | NS085 BAIL SPRING CVR SCR | .52 | 40 | NS057 BODY COVER SCREW | .69 |
| 18 | NS006 ROTOR NUT | .92 | 41 | MK318 HANDLE ASSY. | 8.14 |
| 19 | NS065 ROTOR RET. WASHER | .69 | 42 | LK073 HANDLE SCREW CAP | 1.98 |
| 20 | NS024 KICK LEVER COVER | .98 | 43 | LK315 MAIN SHAFT | 4.02 |
| 21 | NS037 KICK LVR CVR SCR | .52 | 44 | NS089 A/R CLAW SCREW | .29 |
| 22 | NS019 KICK LEVER | 1.61 | 45 | NS013 BODY BUSHING | 1.24 |
| 23 | NS049 KICK LEVER SPRING | 1.39 | 47 | WL001 BODY | 2.06 |
| 24 | NS080 BEARING PLATE SCREW | 1.14 | 48 | GLO09 ROTOR | 6.59 |
| 25 | NS040 BEARING PLATE | 1.27 | | | |

Prices subject to change without notice. Prices do not include postage and handling.

PLEASE ORDER BY PART NUMBER

Rev. 11/90

Zebco Division Brunswick Corporation, Box 270, Tulsa, OK 74101 USA 918-638-8851



BRUNSWICK