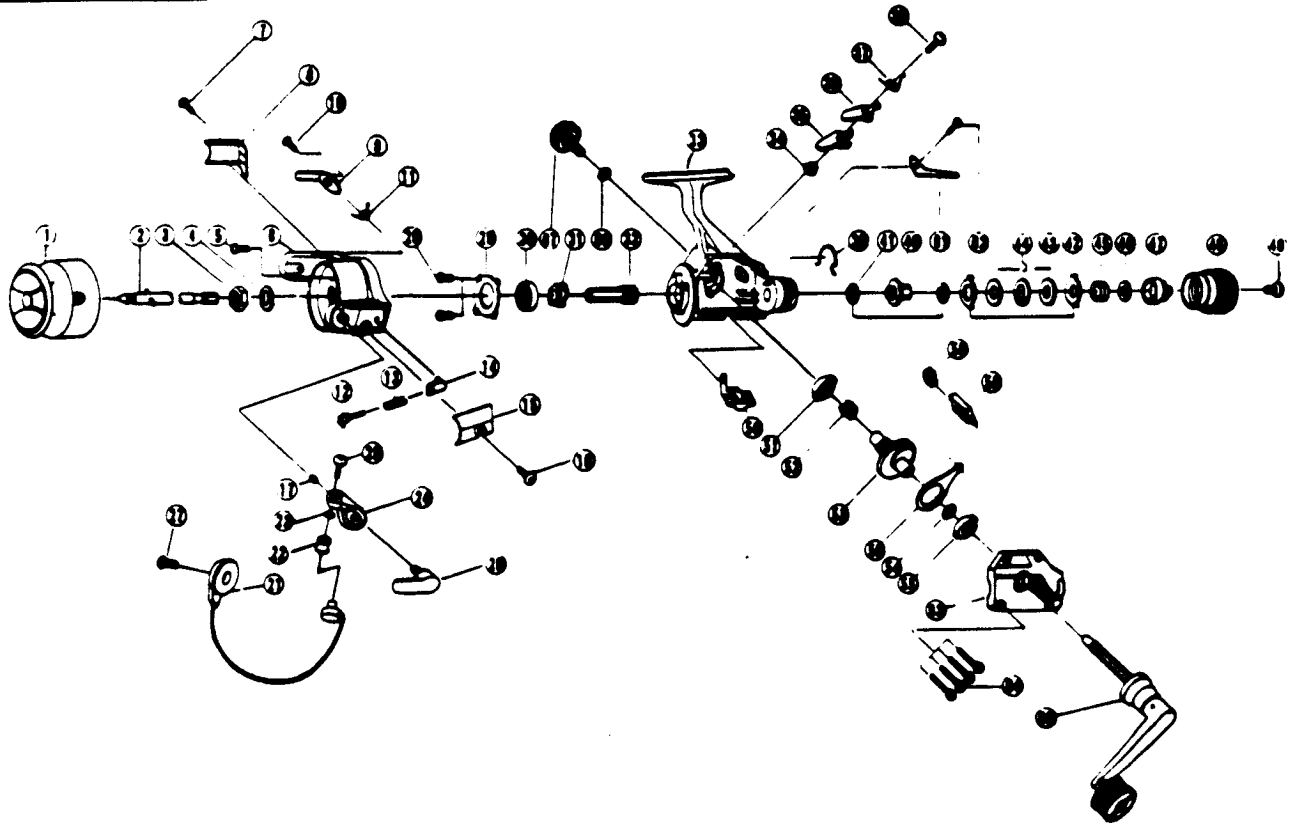


ZEBCO PS20



| KEY PART NO. NO. | DESCRIPTION | PRICE | KEY PART NO. NO. | DESCRIPTION | PRICE |
|------------------|------------------------|-------|------------------|-------------------------|-------|
| 1 SL321 | SPOOL ASST. | 5.25 | 37 RLO61 | STOPPER SPRING | 1.13 |
| 2 SL315 | MAIN SHAFT ASST. | 2.83 | 38 RLO83 | STOPPER SCREW | .62 |
| 3 RLO66 | ROTOR NUT | 1.29 | 39 SLO33 | DRAG CLICK CLAM | 1.13 |
| 4 RLO65 | ROTOR 'D' WASHER | .62 | 40 RLO75 | METAL | 1.13 |
| 5 RLO84 | ROTOR NUT LOCK SCREW | .62 | 41 SLO38 | DRAG 'B' WASHER - 1 | .62 |
| 6 SLO09 | ROTOR | 5.30 | 42 RLO30 | DRAG 'A' WASHER | .62 |
| 7 RLO85 | COVER/CLICK CLAM SCREW | .62 | 43 SLO39 | DRAG 'B' WASHER - 2 | .62 |
| 8 SLO24 | KICK LEVER COVER | .52 | 44 RLO66 | DRAG 'D' WASHER | .62 |
| 9 SLO19 | KICK LEVER | 1.13 | 45 RLO43 | DRAG COIL SPRING | .52 |
| 10 RLO37 | KICK LEVER SCREW | .57 | 46 RLO46 | DRAG ADJUSTING WASHER | .52 |
| 11 RLO49 | KICK LEVER SPRING | .57 | 47 RLO29 | DRAG NUT | .67 |
| 12 RLO31 | SPRING SHAFT | .62 | 48 SLO32 | DRAG CAP | 3.04 |
| 13 RLO22 | BAIL SPRING | .62 | 49 RLO79 | DRAG CAP SCREW | .57 |
| 14 RLO20 | SPRING HOLDER | .52 | 50 RLO89 | STOPPER LEVER | .57 |
| 15 SLO87 | BAIL SPRING COVER | .52 | 51 RLO13 | BODY/BODY COVER BUSHING | .62 |
| 16 RLO85 | COVER/CLICK CLAM SCREW | .62 | 52 RLO86 | SLEWED CAM | .62 |
| 17 RLO34 | E-CLIP | .62 | 53 SLO12 | DRIVE GEAR | 3.24 |
| 20 RL115 | TRIP LEVER | 1.49 | 54 RLO26 | DRIVE GEAR ADJ. WASHER | .52 |
| 21 SL347 | BAIL ASST. | 5.67 | 55 RLO13 | BODY/BODY COVER BUSHING | .62 |
| 22 SLO04 | LINE ROLLER | 2.06 | 56 SLO28 | O/S SLIDER | 1.75 |
| 23 SLO17 | BAIL COLLAR | 1.13 | 58 SLO81 | PIN SLIDER | 1.13 |
| 24 SLO07 | ARM LEVER | 1.13 | 59 SLO78 | SLIDER STOPPER | 1.03 |
| 25 SL108 | BAIL SCREW | .62 | 61 RLO66 | CLICK CLAM | .62 |
| 27 RLO51 | BAIL HOLDER SCREW | .62 | 62 RLO85 | COVER/CLICK CLAM SCREW | .62 |
| 28 SLO80 | BEARING PLATE SCREW | .62 | 63 SLO23 | BODY COVER | 3.71 |
| 29 RLO40 | BEARING PLATE | .62 | 64 SLO57 | BODY COVER SCREW | .62 |
| 30 RLO28 | BALL BEARING | 7.67 | 65 SL318 | HANDLE ASST. | 7.21 |
| 31 RLO60 | RATCHET GEAR | 2.01 | 66 SLO76 | HANDLE SCREW CAP WASHER | .52 |
| 32 SLO11 | PINION GEAR | 6.28 | 67 SLO73 | HANDLE SCREW CAP | 1.60 |
| 33 SLO01 | BODY | 6.95 | 68 RLO82 | KICK LEVER GUIDE | .88 |
| 34 RLO91 | STOPPER BUSHING | .57 | | | |
| 35 RLO64 | STOPPER 'A' | .57 | | | |
| 36 RLO63 | STOPPER 'B' | 1.13 | | | |

Prices subject to change without notice. Prices do not include postage and handling.

PLEASE ORDER BY PART NUMBER

Rev. 11/90

Zebco Division Brunswick Corporation, Box 270, Tulsa, OK 74101 USA 918-638-6681