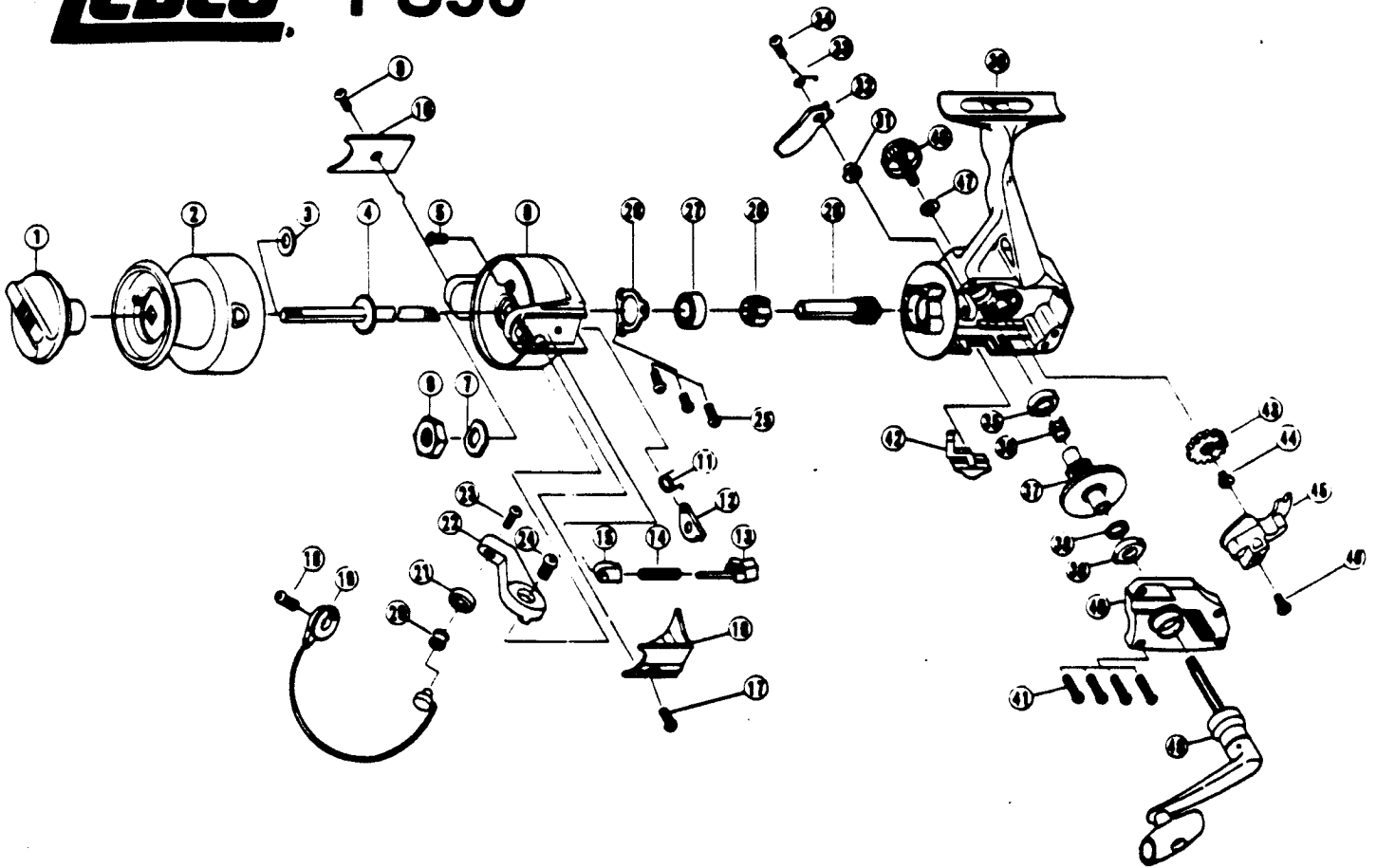


ZEBCO PS50



**KEY PART
NO. NO.**

KEY PART NO. NO.	DESCRIPTION	PRICE
1 UL332	DRAG KNOB ASSY.	3.14
2 UL321	SPOOL ASSY.	6.70
3 UL046	SPOOL ADJ. WASHER	.62
4 UL315	MAIN SHAFT ASSY.	3.19
5 UL094	ROTOR NUT LOCK SCREW	.62
6 UL006	ROTOR NUT	1.03
7 UL065	ROTOR RETAINER WASHER	.67
8 UL009	ROTOR	6.08
9 UL085	KICK LEVER COVER SCREW	.67
10 UL024	KICK LEVER COVER	.67
11 UL049	KICK LEVER SPRING	.67
12 UL019	KICK LEVER	1.29
13 UL031	SPRING SHAFT	.67
14 UL022	BAIL SPRING	1.03
15 UL020	SPRING HOLDER	.62
16 UL087	BAIL SPRING COVER	.62
17 UL085	KICK LEVER COVER SCREW	.67
18 UL051	BAIL HOLDER SCREW	.67
19 UL347	BAIL ASSY.	6.18
20 UL004	LINE ROLLER	2.01
21 UL017	BAIL COLLAR	1.49
22 UL007	ARM LEVER	1.03
23 UL108	BAIL SCREW	.67
24 UL107	ARM LEVER SCREW	.67
25 UL080	BEARING PLATE SCREW	.62

**KEY PART
NO. NO.**

KEY PART NO. NO.	DESCRIPTION	PRICE
26 UL040	BEARING PLATE	1.03
27 UL028	BALL BEARING	8.03
28 UL060	RATCHET	2.94
29 UL011	PINION GEAR	6.18
30 UL001	BODY	8.24
31 UL091	STOPPER BUSHING	.67
32 UL063	STOPPER	1.13
33 UL061	STOPPER SPRING	1.03
34 UL083	STOPPER SCREW	.67
35 UL013	BODY BUSHING	1.03
36 UL086	SILENT CAM	.62
37 UL012	DRIVE GEAR	3.30
38 UL026	DRIVE GEAR ADJ. WASHER	1.13
39 UL013	BODY BUSHING	1.03
40 UL023	BODY COVER	3.14
41 UL057	BODY COVER SCREW	.67
42 UL059	STOPPER LEVER	1.03
43 UL053	OSCILLATING GEAR	2.16
44 UL035	O/S GEAR SCREW	1.24
45 UL081	O/S	2.16
46 UL161	O/S SCREW	.62
47 UL076	HANDLE CAP WASHER	.52
48 UL073	HANDLE SCREW CAP	1.49
49 UL318	HANDLE ASSY.	5.41

Prices subject to change without notice. Prices do not include postage and handling.

PLEASE ORDER BY PART NUMBER

Rev. 11/90

Zebco Division Brunswick Corporation, Box 270, Tulsa, OK 74101 USA 918-638-6581