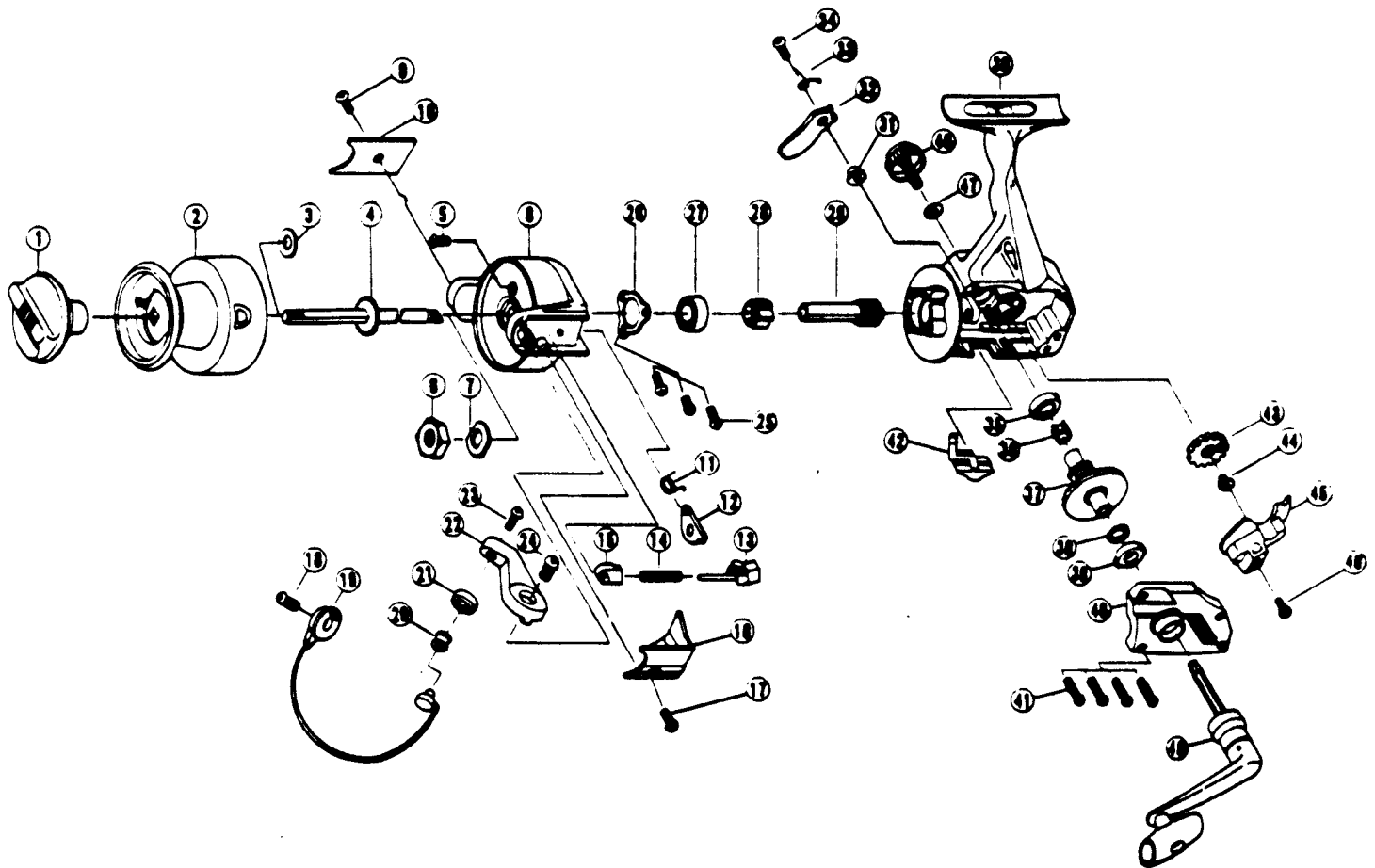


# ZEBCO PS70



KEY PART NO. NO.	DESCRIPTION	PRICE	KEY PART NO. NO.	DESCRIPTION	PRICE
1 UL332	DRAG KNOB ASSY.	3.14	27 ULO28	BALL BEARING	8.03
2 VL321	SPOOL ASSY.	7.42	28 ULO60	RATCHET	2.94
3 ULO46	SPOOL ADJ. WASHER	.62	29 ULO11	PINION GEAR	6.18
4 UL315	MAIN SHAFT ASSY.	3.19	30 VLO01	BODY	8.24
5 ULO94	ROTOR NUT LOCK SCREW	.62	31 ULO91	STOPPER BUSHING	.67
6 ULO06	ROTOR NUT	1.03	32 ULO63	STOPPER	1.13
7 ULO65	ROTOR RETAINER WASHER	.67	33 ULO61	STOPPER SPRING	1.03
8 VLO09	ROTOR	8.24	34 ULO83	STOPPER SCREW	.67
9 ULO85	KICK LEVER COVER SCREW	.67	35 ULO13	BODY BUSHING	1.03
10 ULO24	KICK LEVER COVER	.67	36 ULO86	SILENT CAM	.62
11 VLO49	KICK LEVER SPRING	.62	37 ULO12	DRIVE GEAR	3.30
12 ULO19	KICK LEVER	1.29	38 ULO26	DRIVE GEAR ADJ. WASHER	1.13
13 ULO31	SPRING SHAFT	.67	39 ULO13	BODY BUSHING	1.03
14 ULO22	BAIL SPRING	1.03	40 VLO23	BODY COVER	3.14
15 ULO20	SPRING HOLDER	.62	41 ULO57	BODY COVER SCREW	.67
16 VL087	BAIL SPRING COVER	.62	42 ULO59	STOPPER LEVER	1.03
17 ULO85	KICK LEVER COVER SCREW	.67	43 ULO53	OSCILLATING GEAR	2.16
18 ULO51	BAIL HOLDER SCREW	.67	44 ULO35	O/S GEAR SCREW	1.24
19 VL347	BAIL ASSY.	6.18	45 ULO81	O/S	2.16
20 ULO04	LINE ROLLER	2.01	46 UL161	O/S SCREW	.62
21 ULO17	BAIL COLLAR	1.49	47 ULO76	HANDLE CAP WASHER	.52
22 ULO07	ARM LEVER	1.03	48 ULO73	HANDLE SCREW CAP	1.49
23 UL108	BAIL SCREW	.67	49 VL318	HANDLE ARM	5.41
24 UL107	ARM LEVER SCREW	.67			
25 ULO80	BEARING PLATE SCREW	.62			
26 ULO40	BEARING PLATE	1.03			

Prices subject to change without notice. Prices do not include postage and handling.

**PLEASE ORDER BY PART NUMBER**

Rev. 11/90

Zebco Division Brunswick Corporation, Box 270, Tulsa, OK 74101 USA 918-638-6681

