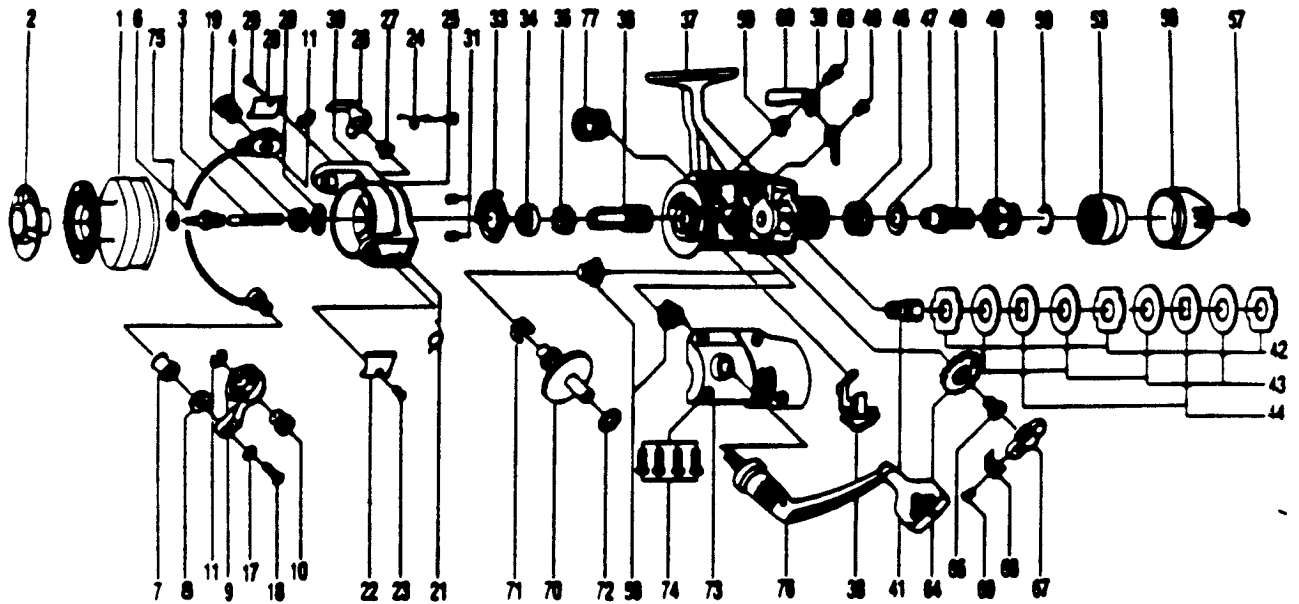


# ZEBCO PSG40



KEY PART NO. NO.	DESCRIPTION	PRICE	KEY PART NO. NO.	DESCRIPTION	PRICE
1 DT321	SPOOL ASSY.	6.31	40 BT067	CLICK CLAM SCREW	.29
3 DT315	MAIN SHAFT ASSY.	2.24	41 DT104	SLIDER HOLDER	.69
4 DT044	BAIL HOLDER PIN	1.14	42 DT030	REAR DRAG WSHR. "A"	1.27
6 DT347	BAIL ARM ASSY.	5.16	43 DT039	REAR DRAG WSHR. "B"	1.43
7 DT004	LINE ROLLER	1.55	44 DT071	REAR DRAG WSHR. "D"	1.03
8 PB016	LN ROLLER BUSH.	.63	46 DT031	REAR DRAG COIL SPR.	1.27
9 PB007	BAIL ARM A	1.72	47 DT046	REAR DRAG ADJ. WSHR.	1.03
10 DT043	ARM LEVER PIN	1.37	48 DT112	REAR DRAG NUT	1.14
11 DT002	E-CLIP	.85	49 DT017	SLIDING SCREW	1.14
17 PB102	BAIL AXLE WASHER	.29	50 DT033	BACK CLICK CLAM	.46
18 PB108	BAIL AXLE SCREW	.39	53 DT132	REAR DRAG STOPPER	1.72
19 NB006	ROTOR NUT	.85	56 DT032	REAR DRAG CAP	2.00
20 DT065	ROTOR RETAINER	.58	57 DT079	REAR DRAG CAP SCREW	.34
21 DT022	BAIL SPRING	.69	58 BT013	BODY COVER BUSHING	.69
22 PB087	BAIL SPRING COVER	.63	59 DT014	A/R CLAM BUSHING	.69
23 BT085	BAIL SPR.COVER SCREW	.63	60 DT063	A/R CLAM (N)	.75
24 DT049	KICK LEVER SPRING	.58	63 DT089	A/R CLAM SCREW	.39
25 DT058	KICK LEVER SPR. SCR.	.46	64 NB053	OSCILLATING GEAR	.92
26 DT019	KICK LEVER	1.32	65 NB078	OSC. GEAR SCR.	.39
27 DT037	KICK LEVER SCREW	.34	67 NB025	OSCILLATOR SLIDER	1.95
28 PB024	TRIP LVR. CVR.	.63	68 NB083	STOPPER	.39
29 BT085	BAIL SPR.COVER SCREW	.63	69 NB084	STOPPER SCREW	.29
30 DT009	ROTOR ASSY.	7.46	70 NB012	CRANK GEAR	3.39
31 BT080	BEARING PLATE SCREW	.34	71 NB086	SLIDER SPRING	.39
33 DT040	BEARING PLATE	1.83	72 RB026	CRANK GEAR SHIM	.29
34 NB028	BALL BEARING	7.97	73 DT323	BODY COVER ASSY.	5.44
35 NB060	A/R RATCHET	.98	74 DT057	BODY COVER SCREW	1.43
36 DT011	PINION GEAR	3.61	76 NB318	HANDLE ASSY.	6.48
37 DT301	BODY ASSY	10.37	77 CT073	HANDLE SCREW CAP	.52
38 DT059	ANTI-REVERSE LEVER	.58			
39 DT068	CLICK CLAM	.39			

Prices subject to change without notice. Prices do not include postage and handling.

**PLEASE ORDER BY PART NUMBER**

Rev. 11/80

Zebco Division Brunswick Corporation, Box 270, Tulsa, OK 74101 USA 918-688-6881

