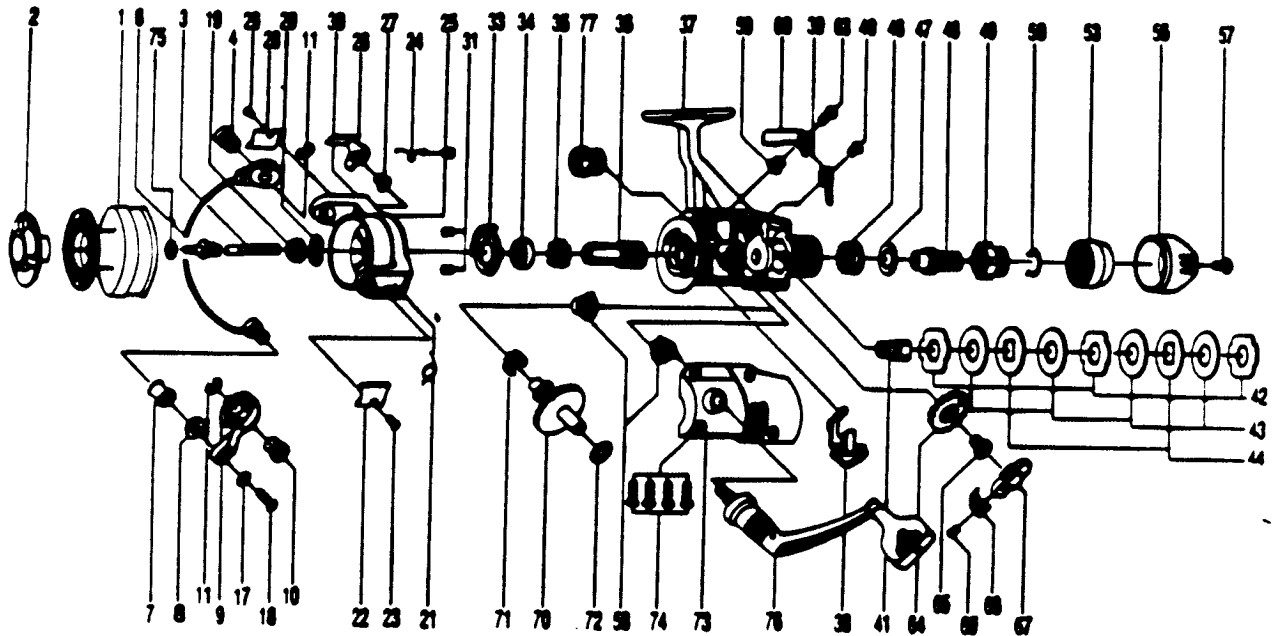


ZEBCO PSG50



KEY PART NO. NO.	DESCRIPTION	PRICE	KEY PART NO. NO.	DESCRIPTION	PRICE
1	ET321 SPOOL ASSY.	6.88	40	ST067 CLICK CLAM SCREW	.29
3	ET318 MAIN SHAFT ASSY.	2.59	41	DT104 SLIDER HOLDER	.69
4	DT044 BAIL HOLDER PIN	1.14	42	DT030 REAR DRAG WSNR. "A"	1.27
6	ET347 BAIL ARM ASSY.	5.16	43	DT039 REAR DRAG WSNR. "B"	1.43
7	NB004 LINE ROLLER	1.09	44	DT071 REAR DRAG WSNR. "D"	1.03
8	NB016 LINE ROLLER BUSH.	.63	46	DT031 REAR DRAG COIL SPR.	1.27
9	NB007 BAIL ARM A	1.83	47	DT046 REAR DRAG ADJ. WSNR.	1.03
10	ET043 ARM LEVER PIN	1.37	48	DT112 REAR DRAG NUT	1.14
11	DT002 E-CLIP	.85	49	DT017 SLIDING SCREW	1.14
17	NB102 BAIL AXLE WASHER	.29	50	DT033 BACK CLICK CLAM	.46
18	NB108 BAIL AXLE SCR	.58	53	DT132 REAR DRAG STOPPER	1.72
19	NB006 ROTOR NUT	.85	56	DT032 REAR DRAG CAP	2.00
20	DT065 ROTOR RETAINER	.58	57	DT079 REAR DRAG CAP SCREW	.34
21	ET022 BAIL SPRING	.69	58	BT013 BODY COVER BUSHING	.69
22	ET087 BAIL SPRING COVER	.69	59	DT014 A/R CLAM BUSHING	.69
23	BT085 BAIL SPR. COVER SCREW	.63	60	DT063 A/R CLAM (N)	.75
24	DT049 KICK LEVER SPRING	.58	63	DT089 A/R CLAM SCREW	.39
25	DT058 KICK LEVER SPR. SCR.	.46	64	NB053 OSCILLATING GEAR	.92
26	ET019 KICK LEVER	1.32	65	NB078 OSC. GEAR SCR.	.39
27	ET037 KICK LEVER SCREW	.39	67	NB025 OSCILLATOR SLIDER	1.95
28	ET024 KICK LEVER COVER	.52	68	NB083 STOPPER	.39
29	BT085 BAIL SPR. COVER SCREW	.63	69	NB084 STOPPER SCREW	.29
30	ET009 ROTOR ASSY.	8.02	70	NB012 CRANK GEAR	3.39
31	BT080 BEARING PLATE SCREW	.34	71	NB086 SLIDER SPRING	.39
33	DT040 BEARING PLATE	1.83	72	NB026 CRANK GEAR SWIN	.29
34	NB028 BALL BEARING	7.97	73	ET323 BODY COVER ASSY.	5.61
35	NB060 A/R RATCHET	.98	74	DT057 BODY COVER SCREW	1.43
36	DT011 PINION GEAR	3.61	76	NB318 HANDLE ASSY.	6.48
37	ET301 BODY ASSY.	11.41	77	CT073 HANDLE SCREW CAP	.52
38	DT059 ANTI-REVERSE LEVER	.58			
39	DT068 CLICK CLAM	.39			

Prices subject to change without notice. Prices do not include postage and handling.
PLEASE ORDER BY PART NUMBER
 Rev. 11/80

Zebco Division Brunswick Corporation, Box 270, Tulsa, OK 74101 USA 918-438-6881

