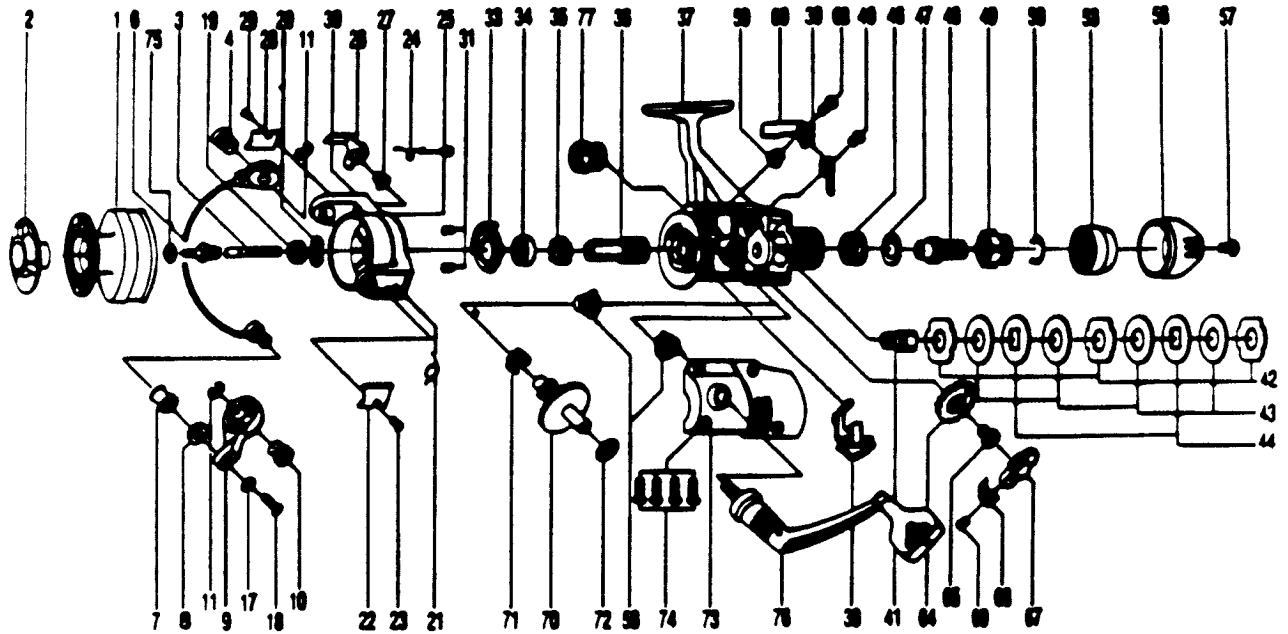


ZEBCO PSG70



KEY PART NO. NO.	DESCRIPTION	PRICE	KEY PART NO. NO.	DESCRIPTION	PRICE
1 FT321	SPOOL ASSY.	7.74	39 DT068	CLICK CLAW	.39
2 FT050	DRAG KNOB ASSY.	1.78	40 BT067	CLICK CLAW SCREW	.29
3 FT315	MAIN SHAFT ASSY.	2.87	41 FT104	SLIDER HOLDER	.75
4 FT044	BAIL HOLDER PIN	1.27	42 FT030	REAR DRAG WASH. "A"	1.32
6 FT347	BAIL ARM ASSY.	5.73	43 FT039	REAR DRAG WASH. "B"	1.55
7 ZB004	LINE ROLLER	1.09	44 FT071	REAR DRAG WASH. "D"	1.09
8 ZB016	LINE ROLLER BUSH	.63	46 FT031	REAR DRAG COIL SPR.	1.27
9 FT007	ARM LEVER	3.44	47 FT046	REAR DRAG ADJ. WASH.	1.03
10 BT043	ARM LEVER PIN	1.37	48 FT112	REAR DRAG NUT	1.27
11 BT002	E-CLIP	.85	49 FT017	SLIDING SCREW	1.27
17 FT102	BAIL WASHER	.39	50 FT033	BACK CLICK CLAW	.46
18 ZB108	BAIL AXLE SCREW	.58	53 FT132	REAR DRAG STOPPER	1.83
19 NB006	ROTOR NUT	.85	56 FT032	REAR DRAG CAP	2.12
20 FT065	ROTOR RETAINER	1.14	57 DT079	REAR DRAG CAP SCREW	.34
21 FT022	BAIL SPRING	.75	58 FT013	BODY CVR. BUSHING	1.78
22 ZB087	BAIL SPRING COVER	.56	59 DT014	A/R CLAM BUSHING	.69
23 BT085	BAIL SPR. COVER SCREW	.63	60 FT063	A/R CLAM (N)	.85
24 ZB049	TRIP LEVER SPRING	.39	63 DT089	A/R CLAM SCREW	.39
25 DT058	KICK LEVER SPR. SCR.	.46	64 FT053	OSCILLATING GEAR	1.32
26 FT019	KICK LEVER	1.32	65 FT078	OSCILLATING GEAR SCR	.46
27 ZB037	TRIP LEVER SCREW	.29	67 ZB025	OSCILLATOR SLIDER	2.17
28 ZB024	TRIP LEVER COVER	.63	68 ZB083	STOPPER	.39
29 BT085	BAIL SPR. COVER SCREW	.63	69 NB084	STOPPER SCREW	.29
30 FT009	ROTOR ASSY	8.60	70 FT012	DRIVE GEAR	3.73
31 BT080	BEARING FLATE SCREW	.34	71 ZB086	SLIDER SPRING	.39
33 ZB040	BEARING RETAINER	1.43	72 ZB026	CRANK GEAR SHIM	.29
34 ZB028	BALL BEARING	7.97	73 FT323	BODY COVER ASSY.	5.73
35 ZB060	ANTI-REV RATCHET	.98	74 FT057	BODY COVER SCREW	1.46
36 FT011	PINION GEAR	4.02	75 FT056	SPOOL ADJ. WASHER	.39
37 FT301	BODY ASSY.	13.75	76 FT318	HANDLE ASSY.	1.47
38 FT059	A/R LEVER	.63	77 CT073	HANDLE SCREW CAP	.22

Prices subject to change without notice. Prices do not include postage and handling.

PLEASE ORDER BY PART NUMBER

Rev. 11/80

Zebco Division Brunswick Corporation, Box 270, Tulsa, OK 74101 USA 918-638-8881

