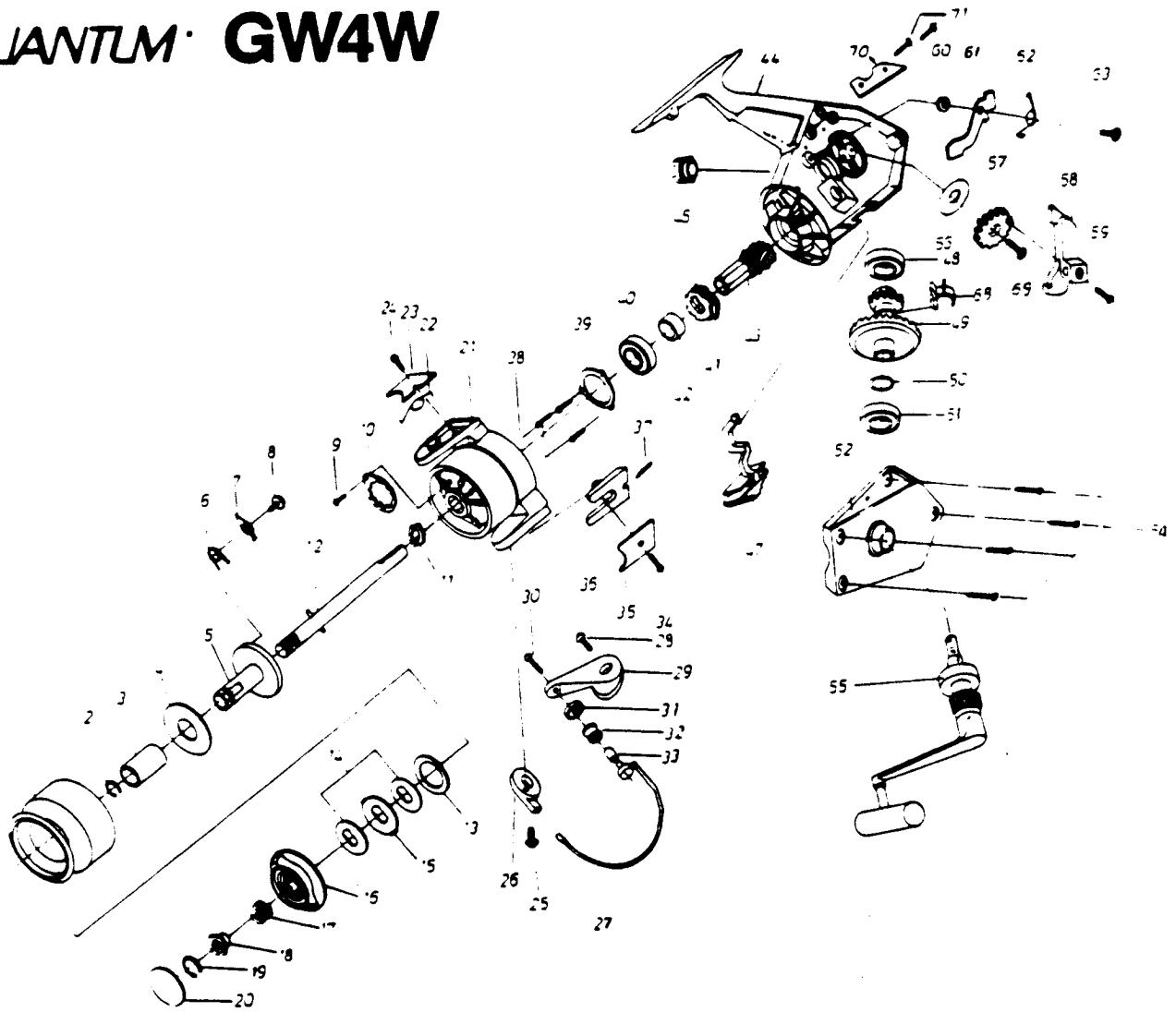


# QUANTUM GW4W



KEY PART NO. NO.	DESCRIPTION	PRICE
1 CL321	SPOOL ASSY. (1-8.13-19)	9.46
4 UK163	SPOOL RETAINER BUSHING	1.87
9 UK058	NUT RING SCREW	1.34
10 UK088	ROTOR NUT RING	.91
11 UK006	ROTOR NUT	1.29
12 UK315	CENTER SHAFT	6.70
13 UK046	DRAG WASHER 'C'	1.29
14 UK039	DRAG WASHER 'B'	1.44
16 CLO30	DRAG KNOB ASSY. (16-20)	5.15
21 CLO09	ROTOR	6.49
22 UK022	ARM LEVER SPRING	.91
23 UK087	ARM LEVER COVER	1.07
24 UK085	ARM LEVER COVER SCREW	1.34
25 UK048	BAIL HOLDER SCREW	1.34
26 UK345	BAIL HOLDER	3.21
27 UK346	BAIL WIRE	3.38
28 UK051	ARM LEVER SCREW	1.50
29 UK007	ARM LEVER	1.34
30 UK108	LINE SLIDER SCREW	1.39
31 UK017	LINE SLIDER COLLAR	1.34
32 UK004	LINE ROLLER	2.09
33 UK016	LINE ROLLER BUSHING	1.61
34 UK037	BAIL HOLDER COVER SCREW	.75
35 UK024	BAIL HOLDER COVER	1.07
36 UK019	KICK LEVER	1.50
37 UK049	KICK LEVER SPRING	.75
38 UK080	BEARING COVER SCREW	1.07
39 UK040	BEARING COVER	1.39
40 UK028	PINION BEARING	9.37

KEY PART NO. NO.	DESCRIPTION	PRICE
41 UK060	STOPPER GEAR	2.09
42 UK126	PINION COLLAR	1.29
43 CLO11	PINION	6.49
44 CLO01	BODY	5.90
45 UK073	DUST COVER	1.44
47 UK059	ANTI-REVERSE SWITCH	.97
48 BL157	BODY/SIDE PLATE BEARING	8.50
49 CLC12	CRANK GEAR	2.63
50 UK026	CRANK GEAR WASHER	.91
51 BL157	BODY/SIDE PLATE BEARING	8.50
52 CLO23	SIDE PLATE	5.41
54 UK057	SIDE PLATE SCREW	2.31
55 CL318	HANDLE ASSY.	10.51
56 UK165	OSC. GUIDE WASHER	.97
57 UK053	OSCILLATOR GEAR	1.29
58 UK025	OSCILLATOR GUIDE	1.29
59 UK084	CENTER SHAFT SCREW	.75
60 UK014	STOPPER SUPPORT BUSHING	.91
61 UK063	STOPPER	1.44
62 UK061	STOPPER SPRING	.91
63 UK089	STOPPER SCREW	.97
64 UK166	STOPPER SUPPORT	1.87
68 UK086	SLIDING SPRING	.75
69 UK078	OSC. GEAR SCREW	1.34
70 UK167	OSC. GUIDE SUPPORT	1.50
71 UK168	OSC. SUPPORT SCREW	.75
72 UK065	ROTOR RETAINER WASHER	.98
73 BL109	PINION WASHER	.92

Prices subject to change without notice. Prices do not include postage and handling.

**PLEASE ORDER BY PART NUMBER**

Rev. 11/90

Zebco Division Brunswick Corporation, Box 270, Tulsa, OK 74101 USA 918-836-6561