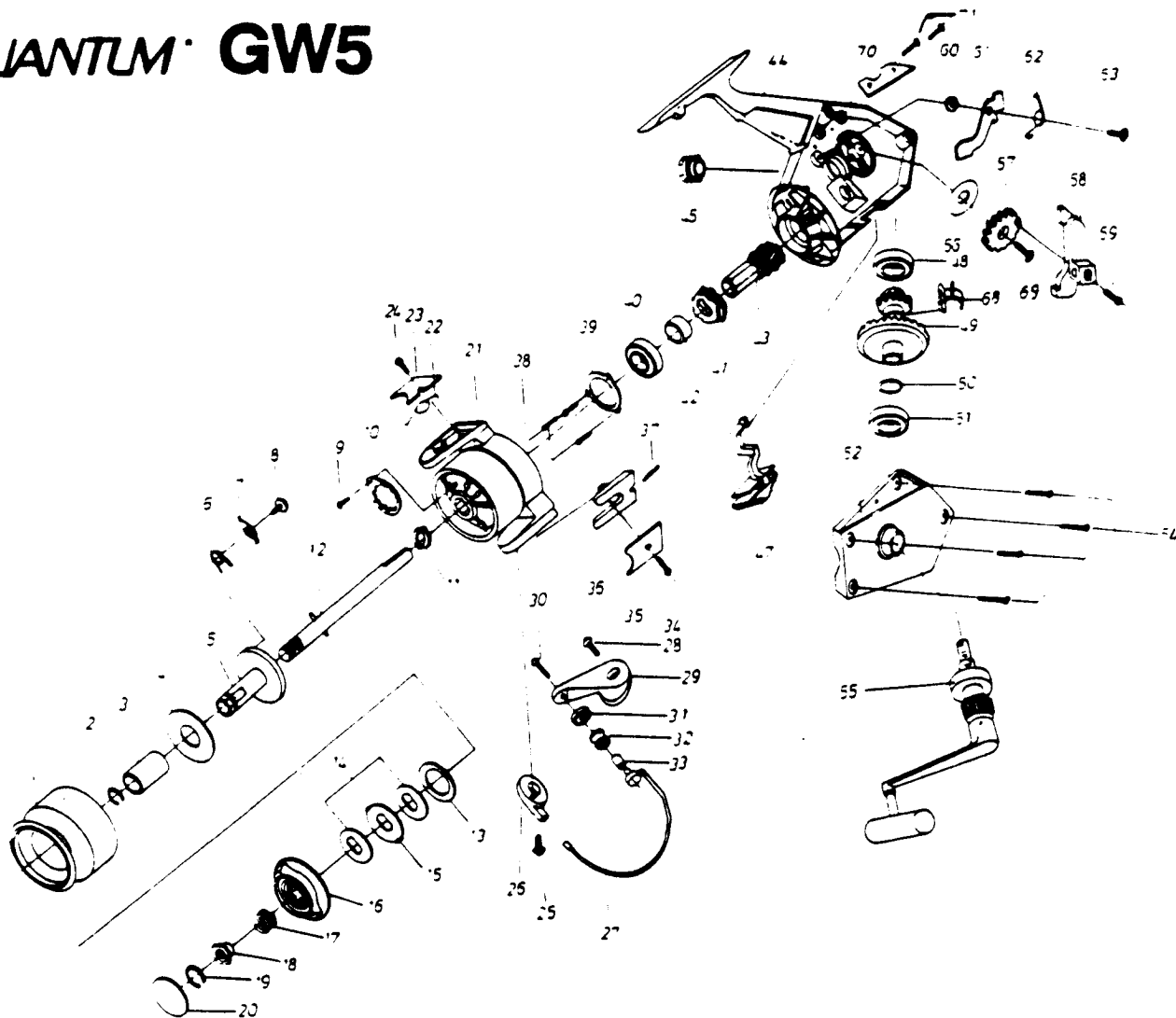


QUANTUM GW5



KEY PART NO. NO.	DESCRIPTION	PRICE
1 DL321	SPOOL ASSY. (1-8,13-15)	10.46
4 WK163	SPOOL RETAINER BUSHING	3.11
9 UK058	NUT RING SCREW	1.34
10 WK088	ROTOR NUT RING	1.07
11 WK006	ROTOR NUT	1.34
12 WK315	CENTER SHAFT	6.43
13 WK046	DRAG WASHER 'C'	1.39
14 WK039	DRAG WASHER 'B'	1.93
16 DLO50	DRAG KNOB ASSY. (16-20)	5.10
21 DLO09	ROTOR	5.41
22 WK022	ARM LEVER SPRING	.91
23 WK087	ARM LEVER COVER	1.29
24 UK085	ARM LEVER COVER SCREW	1.34
25 UK048	BAIL HOLDER SCREW	1.34
26 WK345	BAIL HOLDER	3.32
27 WK346	BAIL WIRE	3.75
28 UK051	ARM LEVER SCREW	1.50
29 WK007	ARM LEVER	1.34
30 UK108	LINE SLIDER SCREW	1.39
31 WK017	LINE SLIDER COLLAR	1.39
32 WK004	LINE ROLLER	2.14
33 UK016	LINE ROLLER BUSHING	1.61
34 UK037	BAIL HOLDER COVER SCREW	.75
35 WK024	BAIL HOLDER COVER	1.29
36 WK019	KICK LEVER	1.61
37 UK049	KICK LEVER SPRING	.75
38 UK080	BEARING COVER SCREW	1.07
39 WK040	BEARING COVER	2.09
40 WK028	PINION BEARING	10.01

KEY PART NO. NO.	DESCRIPTION	PRICE
41 WK060	STOPPER GEAR	2.41
42 WK126	PINION COLLAR	1.34
43 DLO11	PINION	6.70
44 DLO01	BODY	7.67
45 WK073	DUST COVER	1.61
47 WK059	ANTI-REVERSE SWITCH	.91
48 DL157	BODY BEARING	8.76
49 DLO12	CRANK GEAR	6.44
50 WK026	CRANK GEAR WASHER	.91
51 DL157	BODY BEARING	8.76
52 DLO23	SIDE PLATE	2.01
54 WK057	SIDE PLATE SCREW	2.14
55 DL318	HANDLE ASSY.	11.28
56 WK165	OSC. GUIDE WASHER	.91
57 WK053	OSCILLATOR GEAR	1.34
58 WK025	OSCILLATOR GUIDE	1.34
59 WK084	CENTER SHAFT SCREW	.75
60 WK014	STOPPER SUPPORT BUSHING	.91
61 WK063	STOPPER	1.61
62 WK061	STOPPER SPRING	.91
63 UK089	STOPPER SCREW	.97
64 UK166	STOPPER SUPPORT	1.87
68 WK086	SLIDING SPRING	.75
69 WK078	OSC. GEAR SCREW	1.39
70 UK167	OSC. GUIDE SUPPORT	1.50
71 UK168	OSC. SUPPORT SCREW	.75
72 YK065	ROTOR RETAINER WASHER	.88
73 DL109	PINION WASHER	.82

Prices subject to change without notice. Prices do not include postage and handling.

PLEASE ORDER BY PART NUMBER

Rev. 11/90

Zebco Division Brunswick Corporation, Box 270, Tulsa, OK 74101 USA 918-636-6681