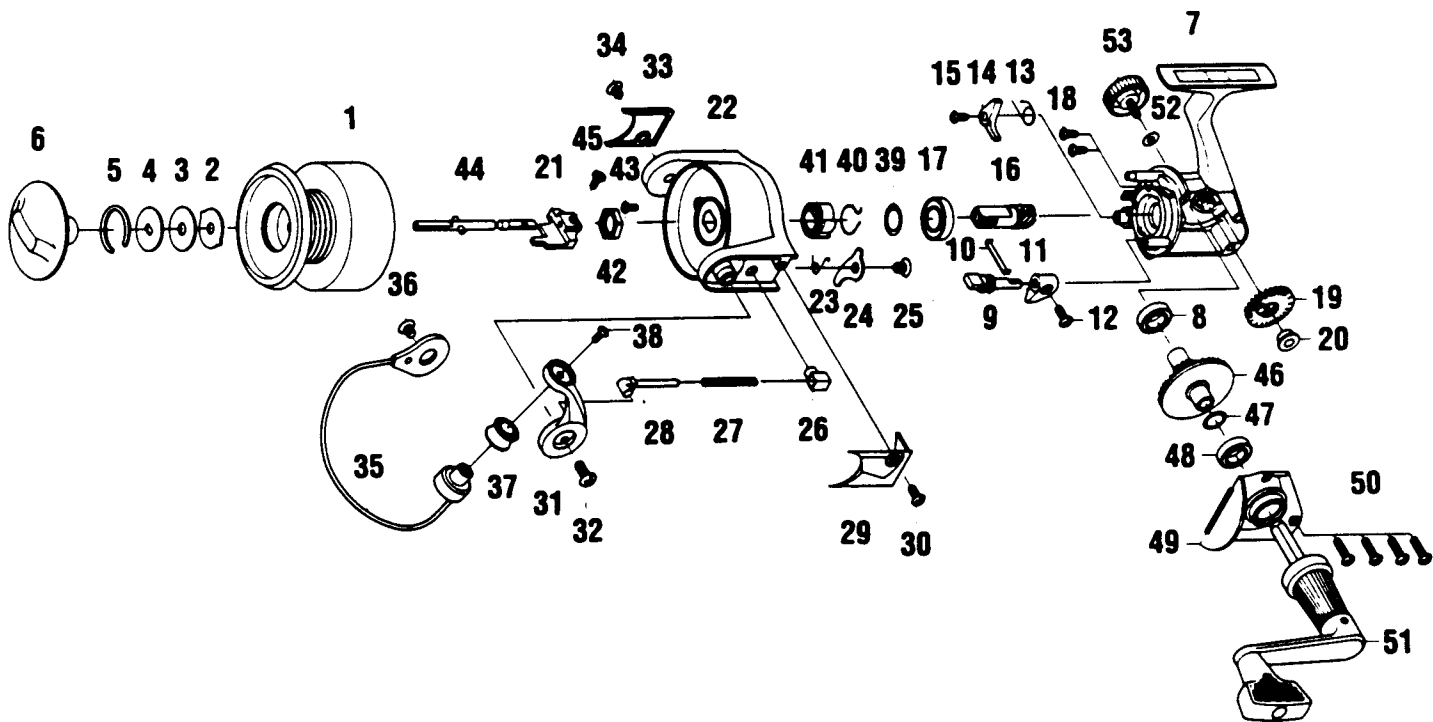


# QUANTUM GW50



Key No.	Part No.	Description	Price	Key No.	Part No.	Description	Price
1	BH321-33	Spool Assembly	7.75	28	BH046-33	Arm Lever Cover	.90
2	BH081-31	Spool Washer "A"	.55	29	BH085-13	Cover Screw	1.75
3	BH033-31	Spool Washer "B"	.60	30	BH007-13	Arm Lever	.45
4	BH080-31	Spool Washer "D"	.90	31	BH044-13	Arm Lever Screw	2.30
5	BH038-31	Drag Retainer	.95	32	BH024-33	Bail Holder Cover	.40
6	BH332-23	Drag Knob Assembly	2.85	33	BH085-13	Cover Screw	1.00
7	BH001-33	Body	3.90	34	BH347-33	Bail Assembly	.45
8	BH027-12	Bearing	6.20	35	BH016-13	Line Roller Washer	4.90
9	BH090-11	Stopper Cam	1.50	36	BH004-13	Line Roller Ball Bearing	.40
10	BH089-11	Stopper Cam Spring	.90	37	BH044-13	Bail Holder Screw	3.90
11	BH059-13	Stopper Lever	.60	38	BH108-13	Bail Screw	.40
12	BH135-13	Stopper Lever Screw	.45	39	BH110-31	Bearing Washer	.50
13	BH061-11	Stopper Spring	.45	40	BH086-31	Silent Spring	1.55
14	BH063-11	Stopper	1.45	41	BH060-31	Ratchet Gear	1.70
15	BH077-11	Stopper Screw	.60	42	BH006-31	Rotor Nut	1.15
16	BH011-31	Pinion Gear	3.15	43	BH094-11	Rotor Nut Lock Screw	.60
17	BH028-11	Ball Bearing	7.00	44	BH315-31	Main Shaft Assembly	5.50
18	BH041-11	Bearing Screw	.60	45	BH100-11	Main Shaft Screw	.60
19	BH053-31	O/S Gear	1.55	46	BH012-31	Driver Gear	5.20
20	BH025-31	O/S Slider	.60	47	BH026-11	Adjust Washer	.65
21	BH009-33	Rotor	2.55	48	BH027-12	Bearing	6.20
22	BH049-31	Kick Lever Spring	4.20	49	BH023-33	Body Cover	2.65
23	BH019-31	Kick Lever	.90	50	BH057-33	Body Cover Screw	.40
24	BH136-11	Kick Lever Screw	1.85	51	BH318-33	Handle Assembly	4.15
25	BH020-11	Spring Holder	.60	52	BH105-11	Handle Cap Washer	.45
26	BH022-31	Arm Lever Spring	.90	53	BH073-33	Handle Screw Cap	2.30
27	BH031-31	Spring Shaft	.60				

Prices subject to change without notice. Prices do not include postage and handling.

**PLEASE ORDER BY PART NUMBER**

Rev. 6/95

Zebco Division Brunswick Corporation, Box 270, Tulsa, OK 74101 USA 918-836-5581



BRUNSWICK