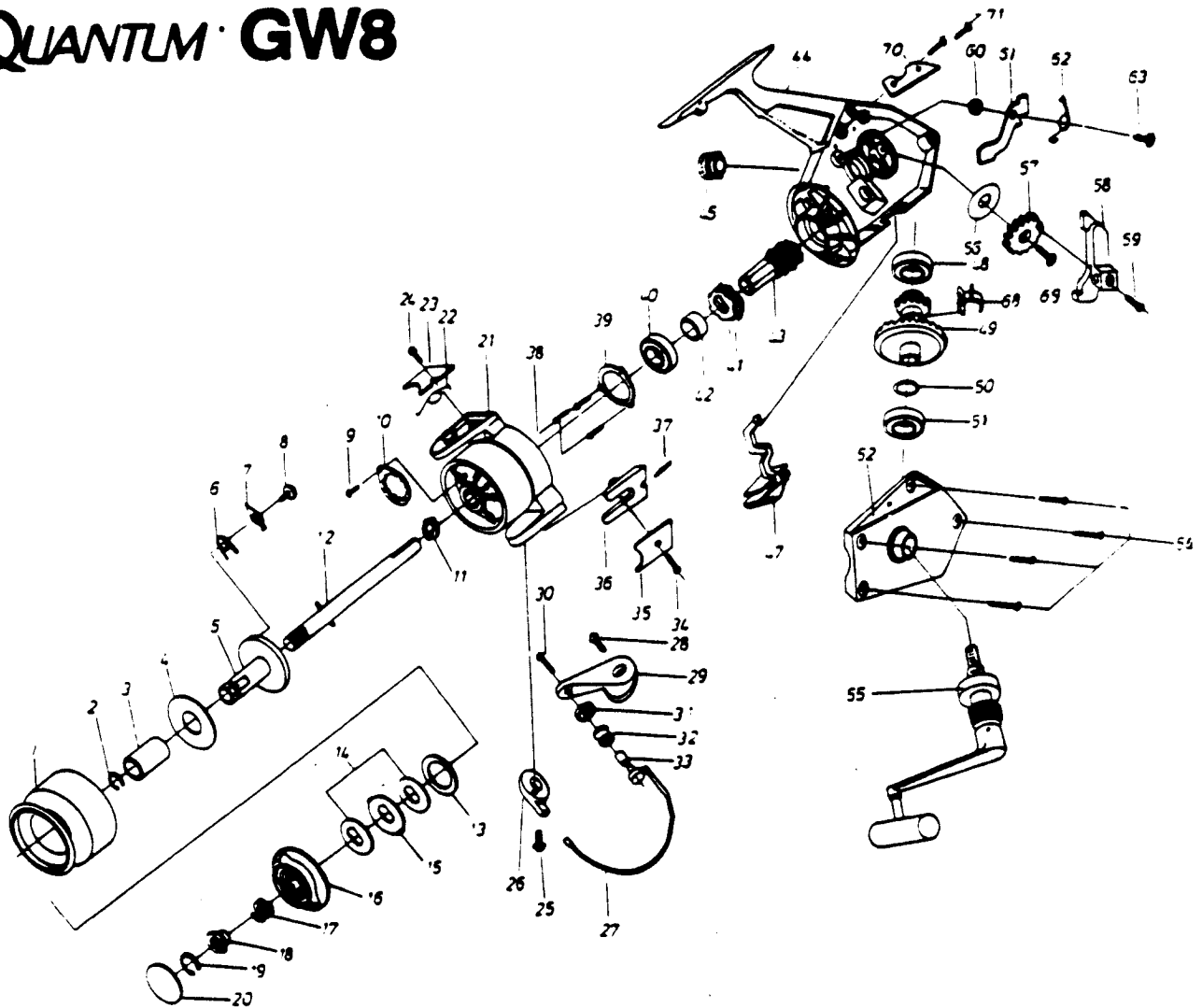


# QUANTUM GW8



KEY PART NO. NO.	DESCRIPTION	PRICE
1 FL321	SPOOL ASSY. (1-8,13-15)	14.46
4 YK163	SPOOL RETAINER BUSHING	3.21
9 YK058	NUT RING SCREW	.88
10 WK088	ROTOR NUT RING	1.07
11 YK006	ROTOR NUT	1.44
12 YK315	CENTER SHAFT	7.45
13 WK046	DRAG WASHER 'C'	1.39
14 WK039	DRAG WASHER 'B'	1.93
16 FLO90	DRAG KNOB ASSY. (16-20)	9.46
21 FLO09	ROTOR	8.50
22 YK022	ARM LEVER SPRING	.91
23 YK087	ARM LEVER COVER	1.39
24 UK089	ARM LEVER COVER SCREW	1.34
25 YK048	BAIL HOLDER SCREW	1.39
26 YK349	BAIL HOLDER	3.38
27 YK346	BAIL WIRE	3.89
28 YK051	ARM LEVER SCREW	1.61
29 YK007	ARM LEVER	1.34
30 YK108	LINE SLIDER SCREW	1.44
31 YK017	LINE SLIDER COLLAR	1.44
32 YK004	LINE ROLLER	2.19
33 YK016	LINE ROLLER BUSHING	1.93
34 UK037	BAIL HOLDER COVER SCREW	.75
35 YK024	BAIL HOLDER COVER	1.39
36 YK019	KICK LEVER	1.93
37 YK049	KICK LEVER SPRING	.97
38 UK080	BEARING COVER SCREW	1.07
39 YK040	BEARING COVER	2.09
40 YK028	PINION BEARING	10.12

KEY PART NO. NO.	DESCRIPTION	PRICE
41 YK060	STOPPER GEAR	2.68
42 YK126	PINION COLLAR	1.39
43 FLO11	PINION	10.30
44 FLO01	BODY	10.56
45 YK073	DUST COVER	1.93
47 YK059	ANTI-REVERSE SWITCH	.91
48 FL157	BODY/SIDE PLATE BEARING	8.55
49 FLO12	CRANK GEAR	1.45
50 WK026	CRANK GEAR WASHER	.91
51 FL157	BODY/SIDE PLATE BEARING	8.55
52 FLO23	SIDE PLATE	1.49
54 WK057	SIDE PLATE SCREW	2.14
55 FL318	HANDLE ASSY.	10.30
56 YK165	OSC. GUIDE WASHER	1.29
57 YK053	OSCILLATOR GEAR	1.44
58 YK029	OSCILLATOR GUIDE	1.44
59 WK084	CENTER SHAFT SCREW	.75
60 WK014	STOPPER SUPPORT BUSHING	.91
61 YK063	STOPPER	1.87
62 YK061	STOPPER SPRING	1.87
63 YK089	STOPPER SCREW	1.44
64 YK166	STOPPER SUPPORT	1.93
68 WK086	SLIDING SPRING	.75
69 YK078	OSC. GEAR SCREW	1.44
70 YK167	OSC. GUIDE SUPPORT	1.87
71 UK168	OSC. SUPPORT SCREW	.75
72 YK065	ROTOR RETAINER WASHER	.88

Prices subject to change without notice. Prices do not include postage and handling.

**PLEASE ORDER BY PART NUMBER**

Rev. 11/90

Zebco Division Brunswick Corporation, Box 270, Tulsa, OK 74101 USA 918-636-6881



BRUNSWICK