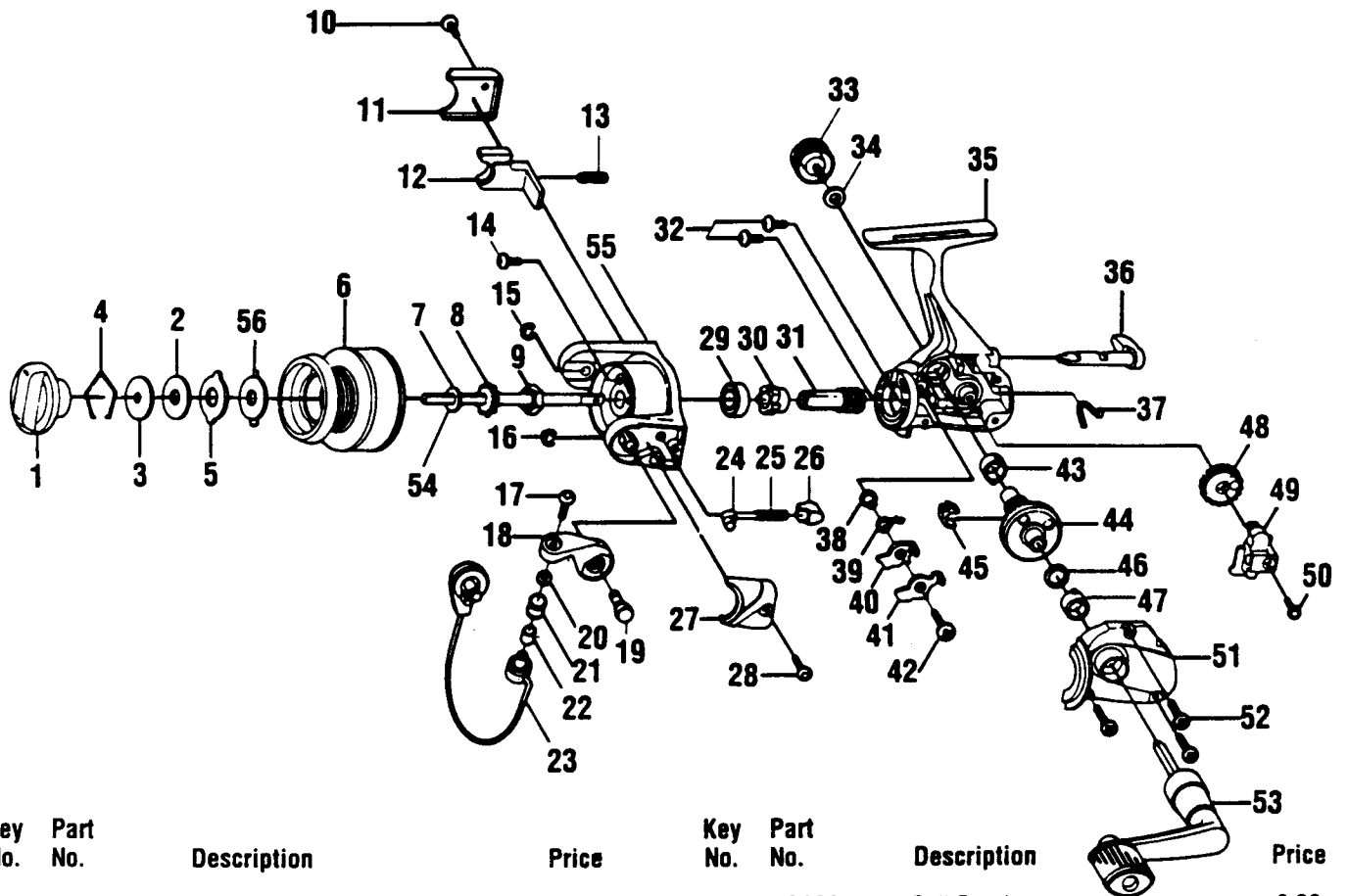


# QUANTUM MS00



Key No.	Part No.	Description	Price	Key No.	Part No.	Description	Price
1	ZU332-2	Drag Knob Assy	1.53	29	AQ028	Ball Bearing	6.90
2	KQ038	Drag Retainer	3.58	30	GU060	Ratchet Gear	2.71
3	ZU080	Spool Washer "D"	.96	31	ZU011	Pinion Gear	3.40
4	KQ029	Spool Washer "B"	.72	32	GU077	Bearing Screw	.69
5	KQ045	Spool Washer "A"	.96	33	GU073-3	Handle Screw C ap	1.11
6	ZU321-1	Spool Assy	8.22	34	GU103	Handle Cap Washer	>.64
7	GU105-6	Spool Washer	.54	35	GU001-6	Body	4.03
8	AQ037	Spool Click Gear	1.28	36	GU090-3	A/R Lever	1.80
9	GU006	Rotor Nut	1.06	37	GU089	Stopper Lever Spring	.96
10	GU077-8	Kick Lever Cover Screw	.74	38	GU091	Stopper Bushing	.96
11	ZU046-2	Kick Lever Cofer	.94	39	GU061	Stopper Spring	.91
12	ZU019	Kick Lever	1.22	40	GU063	Stopper "A"	.96
13	KQ048	Kick Lever Spring	.44	41	GU074	Stopper "B"	.96
14	GU077-4	Rotor Nut Lock Screw	.69	42	GU077-5	Stopper Screw	.74
15	KQ034	"E"-Clip	.15	43	GU027	Body Bushing	.91
16	KQ034	"E"-Clip	.15	44	GU012	Drive Gear	2.49
17	KQ108-3	Bail Screw	.62	45	GU086	Silent Cam	.91
18	LU007-3	Arm Lever	.96	46	GU105-8	Drive Gear Adj. Washer	.47
19	GU051-7	Arm Lever Pin	1.70	47	GU157	Ball Bearing	6.90
20	GU105-7	Line Roller Washer	.54	48	ZU053	Oscillation Gear	.96
21	MT004	Line Roller	1.90	49	GU025	Oscillation Slider	.96
22	MT016-2	Line Roller Bushing	.96	50	GU100	Main Shaft Screw	.54
23	ZU347-2	Bail Assy	5.62	51	GU023-6	Body Cover	2.17
24	KQ0321	Spring Shaft	.56	52	GU057-2	Body Cover Screw	.79
25	KQ049-3	Arm Lever Spring	.54	53	GU318-11	Handle Assy	6.58
26	QL020	Spring Holder	.58	54	ZU015	Main Shaft	2.28
27	ZU087-2	Arm Lever Spring Cover	.74	55	ZU009-2	Rotor	3.03
28	GU077-8	Arm Lever Spring Cover Screw	.74	56	KQ046	Spring Washer	.68

Prices subject to change without notice. Prices do not include postage and handling.

**PLEASE ORDER BY PART NUMBER**

Rev. 6/95

Zebco Division Brunswick Corporation, Box 270, Tulsa, OK 74101 USA 918-836-5581

