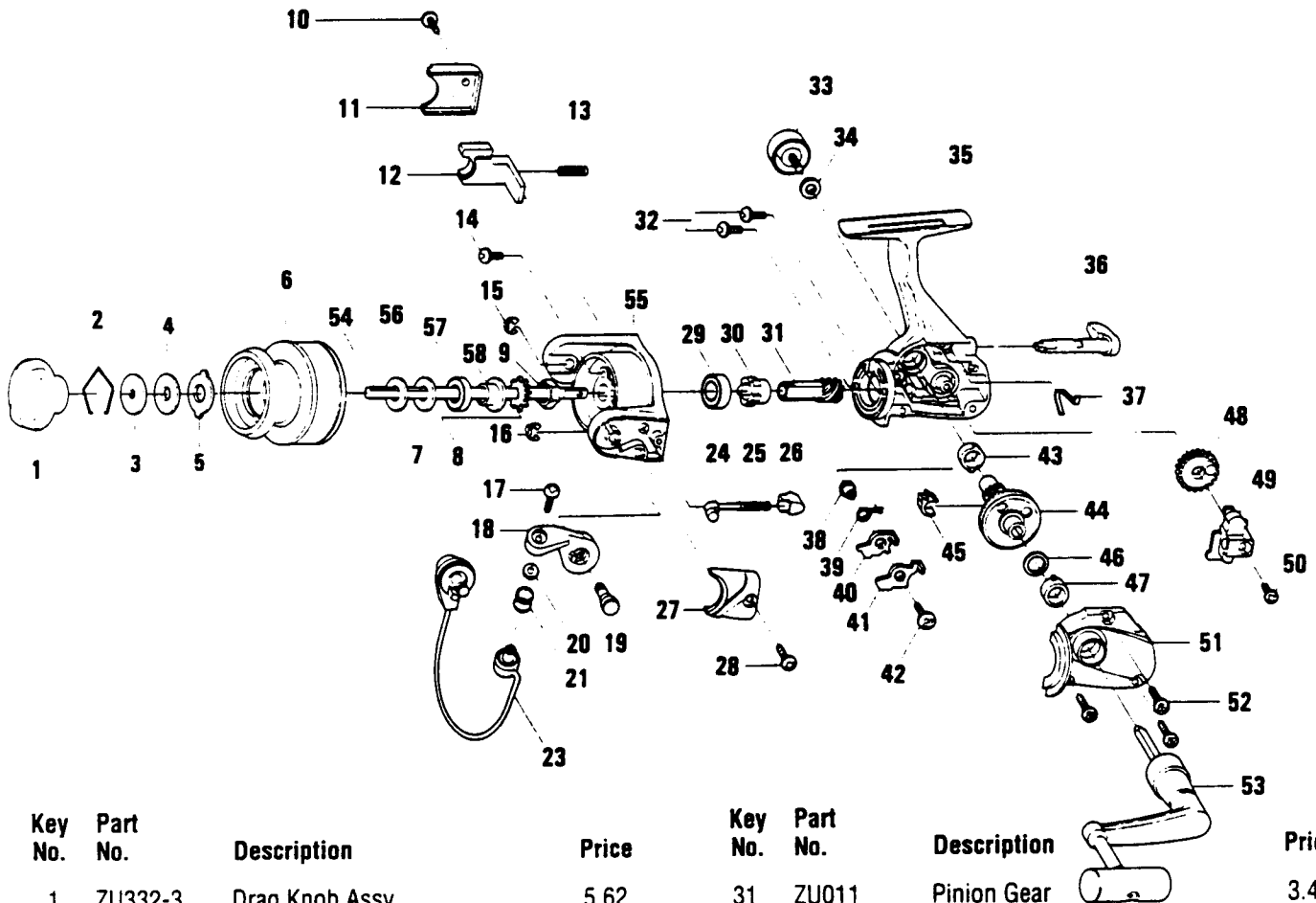


QUANTUM MS00XL



Key No.	Part No.	Description	Price	Key No.	Part No.	Description	Price
1	ZU332-3	Drag Knob Assy	5.62	31	ZU011	Pinion Gear	3.40
2	KQ038	Drag Retainer	3.58	32	GU077	Bearing Screw	.69
3	ZU080	Spool Washer "D"	.96	33	GU073-6	Handle Screw Cap	2.21
4	KQ029	Spool Washer "B"	.72	34	GU105	Handle Cap Washer	.64
5	KQ045	Spool Washer "A"	.96	35	GU001-10	Body	8.03
6	ZU321-3	Spool Assy	10.97	36	GU090-2	A/R Lever	2.16
7	GU105-6	Spool Washer	.54	37	GU089	Stopper Lever Spring	.96
8	AQ037	Spool Click Claw	1.28	38	GU091	Stopper Bushing	.96
9	GU006	Rotor Nut	1.06	39	GU061	Stopper Spring	.91
10	GU077-3	Kick Lever Cover Screw	.62	40	GU063	Stopper "A"	.96
11	ZU046-3	Kick Lever Cover	1.70	41	GU074	Stopper "B"	.96
12	ZU019	Kick Lever	1.22	42	GU077-5	Stopper Screw	.74
13	KQ049	Kick Lever Spring	.44	43	GU157	Ball Bearing	6.90
14	GU077-4	Rotor Nut Lock Screw	.69	44	GU012	Drive Gear	2.49
15	KQ034	"E"-Clip	.15	45	GU086	Silent Cam	.91
16	KQ034	"E"-Clip	.15	46	GU105-8	Drive GearAdj. Washer	.47
17	KQ108-3	Bail Screw	.62	47	GU157-2	Ball Bearing	6.75
18	ZU007	Arm Lever	1.96	48	ZU053	O/S Gear	.96
19	GU051-7	Arm Lever Pin	1.70	49	GU025	O/S Slider	.96
20	EQ017-2	Bail Collar	1.49	50	GU100	Main Shaft Screw	.54
21	EQ004	Line Roller B.B.	5.84	51	GU023-10	Body Cover	4.89
23	ZU347-3	Bail Assy	6.59	52	GU057-2	Body Cover Screw	.79
24	KQ031	Spring Shaft	.56	53	ZU318	Handle Assy	6.59
25	KQ049-3	Arm Lever Spring	.54	54	ZU015	Main Shaft	2.28
26	QL020	Spring Holder	.58	55	ZU009-3	Rotor	5.67
27	ZU087-3	Arm Lever Spring Cover	1.70	56	ZU109	Washer	.77
28	GU077-3	Arm Lever Spring Cover Screw	.62	57	GU157	Ball Bearing	6.90
29	AQ028	Ball Bearing	6.90	58	ZU139	Bearing Sleeve	1.29
30	GU060	Ratchet Gear	2.71				

Prices subject to change without notice. Prices do not include postage and handling.

PLEASE ORDER BY PART NUMBER

Rev. 6/95

Zebco Division Brunswick Corporation, Box 270, Tulsa, OK 74101 USA 918-836-5581



BRUNSWICK