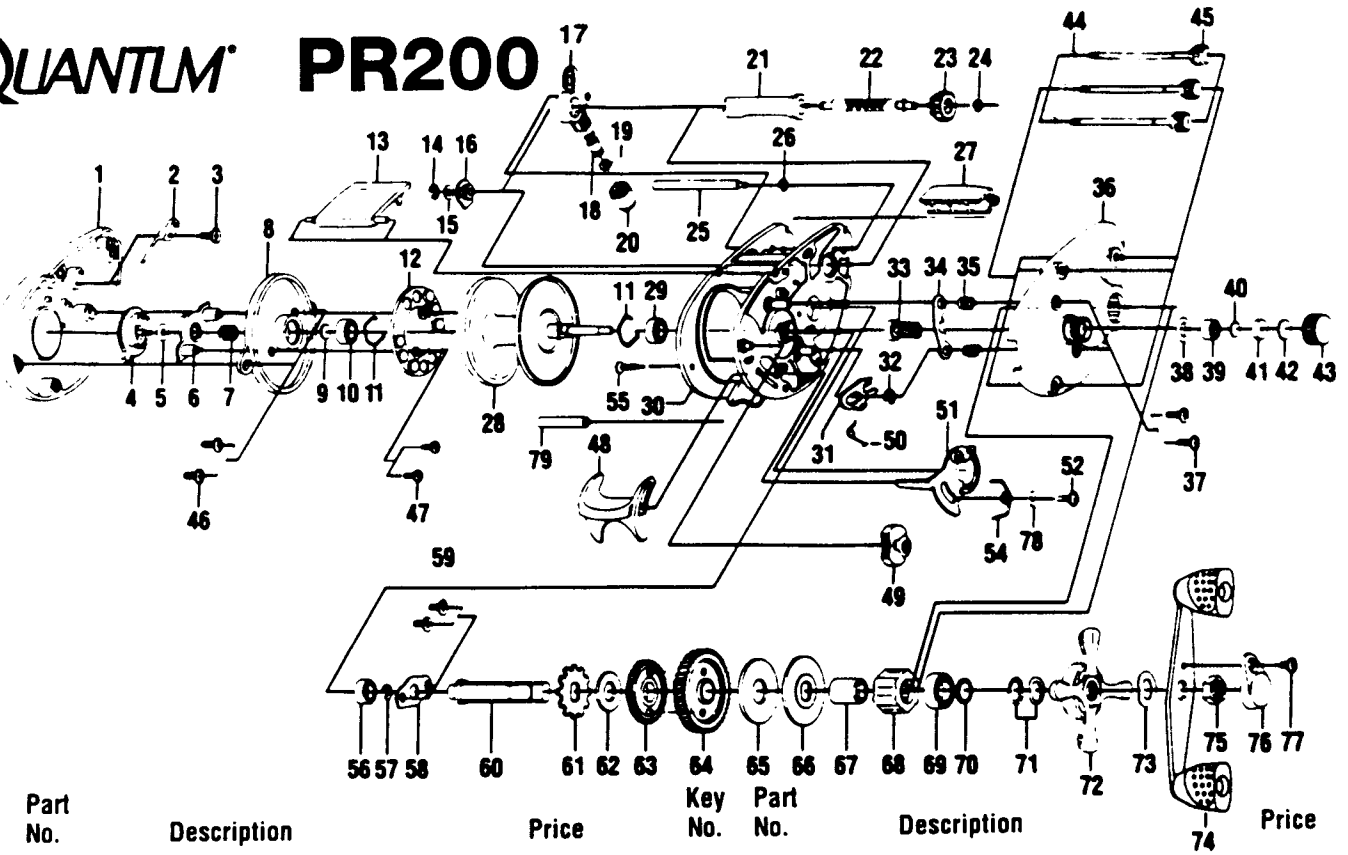


# QUANTUM PR200



Key No.	Part No.	Description	Price	Key No.	Part No.	Description	Price
1	QW023-06	Left Side Cover	7.15	40	QW032-01	Washer - Spool Tension	.50
2	QW108-01	Clicker	.65	41	QW081-01	Collar	3.90
3	QW125-01	Screw - Clicker	.45	42	QW082-01	Cushion Washer - Spool	.65
4	QW026-02	Magnet Control Dial	1.00	43	QW033-01	Spool Tension Knob	1.85
5	NX105-01	Dial Friction Ring	.60	44	QW073-01	Ring - Thumb Screw Ret.	.70
6	QW028-01	Side Cam	.70	45	QW374-01	Thumb Screw	2.85
7	NX071-01	Side Cam Spring	.50	46	QW125-01	Screw - Spool Cover	.45
8	QW051-01	Spool Cover	1.70	47	QW076-01	Screw - Magnet Ring	.65
9	QW032-01	Spool Tension Shim	.50	48	SW009-01	Thumb Bar	.65
10	QW017-01	Bearing	.20	49	SW087-01	Flippin' Switch	.65
11	QW080-01	Clip Ring	.50	50	QW097-01	Spring - Kick Lever	.45
12	QW330-01	Magnet Plate Assy.	2.80	51	SW039-01	Release Slider	1.85
13	QW027-12	Hood	2.40	52	QW076-01	Screw Release Slider	.65
14	NX092-01	E-Clip (Worm Shaft)	.25	54	SW104-01	Spring - Release Slider	.45
15	QW035-03	Washer (Worm Shaft)	.25	55	SW050-01	Thumb Bar Ret. Screw	.65
16	QW067-01	Worm Shaft Bushing	.65	56	QW017-01	Crankshaft Bushing	.20
17	QW347-01	Line Guide Carrier	2.70	57	QW120-01	E-Ring - Crankshaft	.25
18	QW006-01	Line Guide Pawl	2.70	58	QW002-01	Retainer - Crankshaft	.80
19	QW035-03	Washer (L/G Pawl)	.25	59	QW107-01	Screw - Crankshaft Retainer	.45
20	QW007-01	Line Guide Carrier Screw	.25	60	QW008-01	Crankshaft	2.30
21	QW016-01	Worm Shaft Guide	1.10	61	QW083-01	Trip Ratchet	.35
22	QW072-01	Worm Shaft	4.30	62	QW111-01	Washer	.25
23	QW085-01	Level Wind Gear	.85	63	QW112-01	Gear - L/W Idler	.85
24	NX090-01	E-Ring (L/W Gear)	.40	64	SW012-01	Drive Gear	10.35
25	QW061-01	Stabilizer Bar	1.55	65	QW059-01	Drag Disc	1.65
26	NX090-01	E-Ring (Stabilizer Bar)	.40	66	QW045-01	Drag Washer	.80
27	QW099-13	Front Support	2.80	67	QW052-01	Clutch Sleeve	2.75
28	QW321-01	Spool Assy.	14.42	68	QW063-01	Anti-Reverse Clutch	10.50
29	QW017-01	Bushing - Spool Shaft (R)	.20	69	TW058-01	Bearing - Crankshaft Top	7.00
30	SW001-01	Frame	5.95	70	TW035-01	Washer - Crankshaft	.45
31	SW077-01	Kick Lever	.90	71	QW046-02	Spring "D" Washer	.95
32	QW120-01	E-Ring (Kick Lever)	.25	72	QW055-01	Drag Star	1.85
33	SW311-01	Pinion Gear	10.04	73	QW054-01	Handle Washer	.70
34	SW025-01	Pinion Yoke	.65	74	TW318-04	Handle Assy.	5.60
35	QW040-01	Spring-Pinion Yoke	.65	75	QW003-01	Handle Nut	.35
36	SW024-12	Right Side Cover	5.45	76	QW034-02	Handle Nut Cap	.65
37	QW053-01	Screw (Rt. Side Cover)	.65	77	QW123-01	Handle Nut Cap Screw	.15
38	QW101-01	Tension Knob Ring	.25	78	SW121-01	Washer - Release Slider	.45
39	QW117-01	Bushing - Tension Knob	.20	79	SW094-01	Spacer	4.30

Prices subject to change without notice. Prices do not include postage and handling.

**PLEASE ORDER BY PART NUMBER**

Rev. 6/95

Zebco Division Brunswick Corporation, Box 270, Tulsa, OK 74101 USA 918-836-5581

