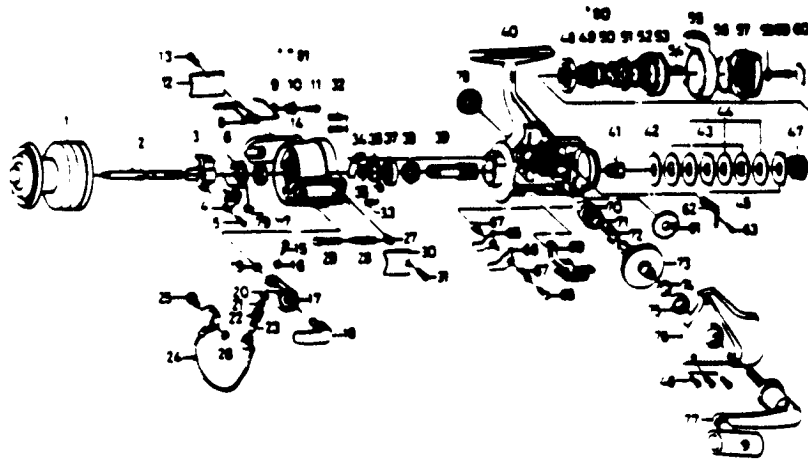


QUANTUM QC3



KEY PART NO.	DESCRIPTION	PRICE	KEY PART NO.	DESCRIPTION	PRICE
MT321-1	SPOOL ASSY. EXTRA	6.02	42 MTO39	DRAG WASHER B	1.66
1 MT321	SPOOL ASSY. (MAIN)	6.02	43 MTO41	EARED WASHER	1.83
2 MT315	MAIN SHAFT	3.16	44 MTO46	DRAG WASHER C	1.83
3 MTO25	OSCILLATING SLIDER	1.83	45 MTO30	KEY WASHER	1.83
4 MTO83	OSC. SLIDER RETAINER	.85	46 MTO57	SIDE COVER SCREW	2.87
5 MT161	OSC. SLIDER SCREW	.85	47 MTO31	DRAG COIL SPRING	1.27
6 MTO88	ROTOR NUT LOCK WASHER	1.27	48 MT112	DRAG NUT A	3.39
7 MTO06	ROTOR NUT	1.27	49 MT121	DRAG SCREW	1.43
8 MTO19	BAIL TRIP LEVER	1.72	50 MT106	DRAG SCREW WASHER A	.98
9 MTO49	BAIL TRIP LEVER SPRING	.85	51 MT110	DRAG HOLDER	1.83
10 MT137	BAIL TRIP LV. BUSHING	.98	52 MT111	DRAG SCREW WASHER B	.98
11 MTO37	BAIL TRIP LEVER SCREW	.85	53 MT117	DRAG NUT B	4.53
12 MTO24	BAIL TRIP COVER	1.09	54 MT118	DRAG SPRING	1.09
13 MTO85	BAIL SPG COVER SCRW	1.09	55 MTO94	POWER LEVER	4.53
14 MTO09	ROTOR	4.87	56 MTO95	POWER LEVER RETAINER	.46
15 MT108	BAIL SCREW	1.27	57 MTO32	DRAG KNOB	3.39
16 MT102	LOCK WASHER	.46	58 MT119	DRAG KNOB WASHER	.85
17 MTO07	BAIL ARM	1.66	59 MTO79	DRAG KNOB SCREW	.85
18 MT115	CAM CAST LV. RETAINER	5.68	60 MT120	DRAG KNOB NAME PLATE	1.27
19 MTO02	CAM CAST LV. RETAINER	.46	61 MTO53	OSCILLATING GEAR	1.43
20 MTO17	LINE ROLLER COLLAR	.46	62 MTO68	CLICK LEAF SPRING	.98
21 MTO15	LINE ROLLER	.46	63 MTO67	CLICK LEAF SPRING SCRW	.85
22 MTO04	LINE ROLLER	1.72	64 MTO14	ANTI-REV PAWL COLLAR	.98
23 MTO16	LINE ROLLER BUSHING	.46	65 MTO63	ANTI-REV. PAWL A	1.09
24 MT347	BAIL	3.73	66 MTO64	ANTI-REV. PAWL B	1.27
25 MTO44	BAIL HOLDER PIN	1.83	67 MTO61	ANTI-REV PAWL SPG A	.85
26 MTO03	BAIL TRIP CAM RET.	.85	68 MTO89	ANTI-REV PAWL SCREW	.85
27 MTO20	BAIL SPG SHAFT HLDR	.98	69 MTO59	ANTI-REV. LEVER	1.27
28 MTO22	BAIL SPRING	.46	70 MTO52	BUSHING	2.24
29 MTO29	BAIL SPRING SHAFT	1.09	71 MT253	OSCILLATING PN GEAR	1.66
30 MTO87	BAIL SPRING COVER	.98	72 MTO86	ANTI-REV PAWL SPG B	.98
31 MTO85	BAIL SPG COVER SCRW	1.09	73 MTO12	DRIVE GEAR	10.26
32 MTO80	BEARING RET. SCREW A	.98	74 MTO26	DRIVE GEAR WASHER	.46
33 MTO93	BEARING RET. SCREW B	.98	75 MT157	BALL BEARING	9.12
34 MTO82	BAIL TRIP PLATE	1.43	76 MT323	SIDE COVER	5.68
35 MTO27	PINION WASHER	.85	77 MT318	HANDLE ASSY.	10.26
36 MTO40	BEARING RETAINER	1.72	78 MTO73	HANDLE SCREW CAP	2.30
37 MTO28	BALL BEARING	9.12	79 MTO58	RTR NUT LOCK SCREW	.85
38 MTO60	ANTI-REV. RATCHET	3.55	*80 MT121	DRAG SCREW	1.43
39 MTO11	PINION GEAR	6.59	**81 MT122	BAIL TRIP LEVER WSHR	.46
40 MT301	BODY	9.12			
41 MTO66	CLICK GEAR	1.83			

*Not pictured
Located between Keys 48 & 50

**Not pictured
Located between Keys 10 & 11

Prices subject to change without notice. Prices do not include postage and handling.

PLEASE ORDER BY PART NUMBER

Rev. 11/90

Zabes Division Brunswick Corporation, Box 270, Tulsa, OK 74101 USA 918-639-6681

