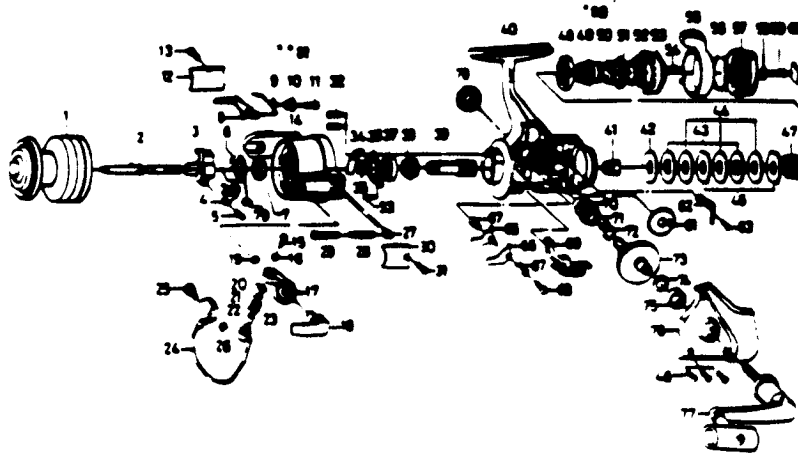


# QUANTUM QC3W



KEY PART NO. NO.	DESCRIPTION	PRICE	KEY PART NO. NO.	DESCRIPTION	PRICE
GK321-1	SPOOL (EXTRA)	6.31	43 MT041	EARED WASHER	1.83
1 GK321	SPOOL (MIN)	6.88	44 MT046	DRAG WASHER C	1.83
2 MT315	MAIN SHAFT	3.16	45 MT030	KEY WASHER	1.83
3 MT025	OSCILLATING SLIDER	1.83	46 MT057	SIDE COVER SCREW	2.87
4 MT083	OSC. SLIDER RETAINER	.85	47 MT031	DRAG COIL SPRING	1.27
5 MT161	OSC. SLIDER SCREW	.85	48 MT112	DRAG NUT A	3.39
6 MT088	ROTOR NUT LOCK WASHER	1.27	49 MT121	DRAG SCREW	1.43
7 MT006	ROTOR NUT	1.27	50 MT106	DRAG SCREW WASHER A	.98
8 GK019	BAIL TRIP LEVER	1.71	51 MT110	DRAG HOLDER	1.83
9 MT049	BAIL TRIP LEVER SPRING	.85	52 MT112	DRAG NUT A	3.39
10 MT137	BAIL TRIP LV. BUSHING	.98	53 MT117	DRAG NUT B	4.53
11 MT037	BAIL TRIP LEVER SCREW	.85	54 MT118	DRAG SPRING	1.09
12 MT024	BAIL TRIP COVER	1.09	55 MT094	POWER LEVER	4.53
13 MT085	BAIL SPG COVER SCRW	1.09	56 MT095	POWER LEVER RETAINER	.46
14 GK009	ROTOR	4.87	57 MT032	DRAG KNOB	3.39
15 MT108	BAIL SCREW	1.27	58 MT119	DRAG KNOB WASHER	.85
16 MT102	LOCK WASHER	.46	59 MT079	DRAG KNOB SCREW	.85
17 MT007	BAIL ARM	1.66	60 MT120	DRAG KNOB NAME PLATE	1.27
18 MT115	CAM CAST LEVER	5.68	61 MT053	OSCILLATING GEAR	1.43
19 GK002	CAM CAST LEVER RET.	.46	62 MT068	CLICK LEAF SPRING	.98
20 MT017	LINE ROLLER COLLAR	.46	63 MT067	CLICK LEAF SPRING SCRW	.85
21 MT015	LINE ROLLER	.46	64 MT014	ANTI-REV. PAML COLLAR	.98
22 MT004	LINE ROLLER	1.72	65 MT063	ANTI-REV. PAML A	1.09
23 MT016	LINE ROLLER BUSHING	.46	66 MT064	ANTI-REV. PAML B	1.27
24 MT347	BAIL	3.73	67 MT061	ANTI-REV. PAML SPG A	.85
25 MT044	BAIL HOLDER PIN	1.83	68 MT089	ANTI-REV. PAML SCREW	.85
26 MT003	BAIL TRIP CAM RET.	.85	69 MT059	ANTI-REV. LEVER	1.27
27 MT020	BAIL SPG SHAFT HLDG	.98	70 MT052	BUSHING	2.24
28 MT022	BAIL SPRING	.46	71 MT253	OSCILLATING PW GEAR	1.66
29 MT029	BAIL SPRING SHAFT	1.09	72 MT086	ANTI-REV. PAML SPG B	.98
30 MT087	BAIL SPRING COVER	.98	73 MT012	DRIVE GEAR	10.26
31 MT065	BAIL SPG COVER SCRW	1.09	74 MT026	DRIVE GEAR WASHER	.46
32 MT080	BEARING RET. SCREW A	.98	75 MT157	BALL BEARING	9.12
33 MT093	BEARING RET. SCREW B	.98	76 MT323	SIDE COVER	5.68
34 MT082	BAIL TRIP PLATE	1.43	77 MT318	HANDLE ASST.	10.26
35 MT027	PINION WASHER	.85	78 MT073	HANDLE SCREW CAP	2.30
36 MT040	BEARING RETAINER	1.72	79 MT058	RTR NUT LOCK SCREW	.85
37 MT028	BALL BEARING	9.12	*80 MT121	DRAG SCREW	1.43
38 MT060	ANTI-REV. RATCHET	3.53	**81 MT122	BAIL TRIP LEVER WSR	.46
39 MT011	PINION GEAR	6.59			
40 MT301	BODY	9.12			
41 MT066	CLICK GEAR	1.83			
42 MT039	DRAG WASHER B	1.66			

\*Not pictured  
Located between keys 49 & 80

\*\*Not pictured  
Located between keys 10 & 11

Prices subject to change without notice. Prices do not include postage and handling.

**PLEASE ORDER BY PART NUMBER**

Rev. 11/80

Zebco Division Brunswick Corporation, Box 278, Tulsa, OK 74101 USA 918-688-8891

