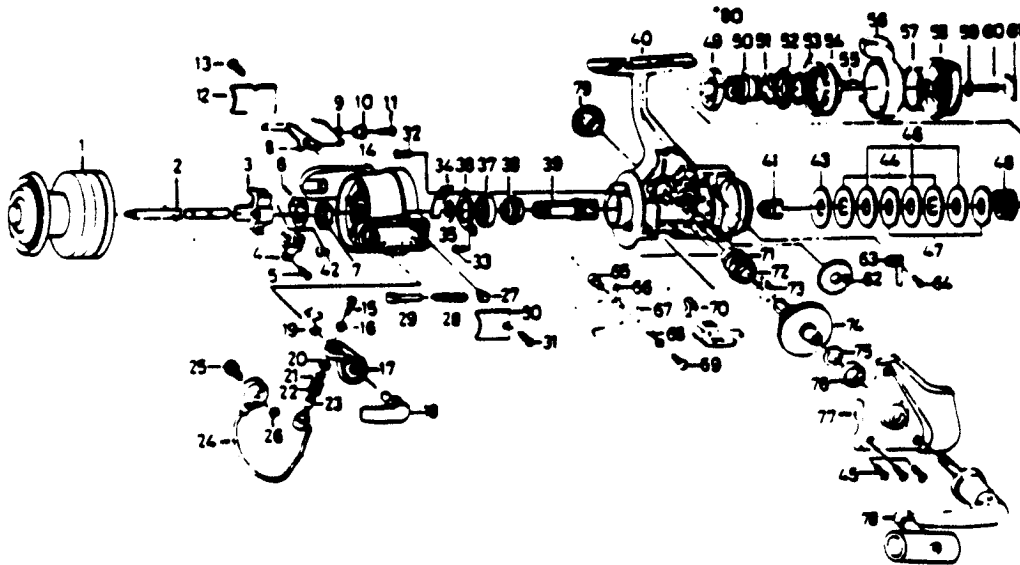


QUANTUM QC5



KEY PART NO.	DESCRIPTION	PRICE	KEY PART NO.	DESCRIPTION	PRICE
PT321-1	SPOOL ASSY. EXTRA	7.46	42 NTO58	RTR NUT LOCK SCREW	.85
1 PT321	SPOOL ASSY. (MAIN)	7.46	43 NTO39	DRAG WASHER B	1.66
2 NT315	MAIN SHAFT	3.73	44 NTO41	EARED WASHER	1.83
3 NTO25	OSCILLATING SLIDER	1.83	45 NTO57	SIDE COVER SCREW	2.87
4 NTO83	OSC. SLIDER RETAINER	.98	46 NTO46	DRAG WASHER C	2.87
5 NT161	OSC. SLIDER SCREW	.85	47 NTO30	KEY WASHER	1.83
6 NTO88	ROTOR NUT LOCK WASHER	1.43	48 NTO31	DRAG COIL SPRING	1.66
7 NTO06	ROTOR NUT	1.27	49 NT112	DRAG NUT A	3.44
8 PT019	BAIL TRIP LEVER	2.24	50 NT121	DRAG SCREW	1.43
9 NTO49	BAIL TRIP LEVER SPRING	.85	51 NT106	DRAG SCREW WASHER A	.98
10 NT137	BAIL TRIP LV. BUSHING	1.09	52 NT110	DRAG SOLDER	1.83
11 NTO37	BAIL TRIP LEVER SCREW	.88	53 NT111	DRAG SCREW WASHER B	.98
12 NTO24	BAIL TRIP COVER	1.09	54 NT117	DRAG NUT B	4.58
13 NTO85	BAIL SPG COVER SCRN	1.09	55 NT118	DRAG SPRING	1.09
14 PT009	ROTOR	5.44	56 NTO94	POWER LEVER	4.53
15 NT108	BAIL SCREW	1.27	57 NTO98	POWER LEVER RETAINER	.46
16 NT102	LOCK WASHER	.46	58 NTO32	DRAG KNOB	3.39
17 NTO07	BAIL ARM	1.83	59 NT119	DRAG KNOB WASHER	.85
18 NT115	CAN CAST LEVER	5.68	60 NTO79	DRAG KNOB SCREW	.85
19 NTO02	CAN CAST LV. RETAINER	.46	61 NT120	DRAG KNOB NAME PLATE	1.27
20 NTO17	LINE ROLLER COLLAR	.46	62 NTO83	OSCILLATING GEAR	1.43
21 NTO15	LINE ROLLER	.46	63 NTO88	CLICK LEAF SPRING	.98
22 NTO04	LINE ROLLER	1.72	64 NTO67	CLICK LEAF SPRING SCRN	.85
23 NTO16	LINE ROLLER BUSHING	.46	65 NTO14	ANTI-REV PAML COLLAR	.98
24 PT347	BAIL	4.02	66 NTO63	ANTI-REV. PAML A	1.27
25 NTO44	BAIL HOLDER PIN	1.83	67 NTO64	ANTI-REV. PAML B	1.43
26 NTO03	BAIL TRIP CAN RET.	.85	68 NTO81	ANTI-REV PAML SPG A	.85
27 NTO20	BAIL SPG SHAFT ELDR	.98	69 NTO89	ANTI-REV PAML SCREW	.85
28 NTO22	BAIL SPRING	.46	70 NTO89	ANTI-REV. LEVER	1.27
29 NTO29	BAIL SPRING SHAFT	1.09	71 NTO52	BUSHING	2.24
30 NTO87	BAIL SPRING COVER	.98	72 NT283	OSCILLATING PW GEAR	1.66
31 NTO85	BAIL SPG COVER SCRN	1.09	73 NTO86	ANTI-REV PAML SPG B	.98
32 NTO80	BEARING RET. SCREW A	.98	74 NTO12	DRIVE GEAR	10.61
33 NTO93	BEARING RET. SCREW B	.85	75 NTO26	DRIVE GEAR WASHER	.46
34 NTO82	BAIL TRIP PLATE	1.43	76 NT157	BALL BEARING	9.12
35 NTO27	PINION WASHER	.85	77 PT323	SIDE COVER	5.90
36 NTO40	BEARING RETAINER	1.83	78 PT318	HANDLE ASSY.	10.49
37 NTO28	BALL BEARING	9.12	79 NTO73	HANDLE SCREW CAP	2.30
38 NTO60	ANTI-REV. RATCHET	3.73	80 NT121	DRAG SCREW	1.43
39 NTO11	PINION GEAR	6.82			
40 PT301	BODY	9.46			
41 NTO66	CLICK GEAR	1.83			

*Not pictured
Located between Keys 40 & 80

Prices subject to change without notice. Prices do not include postage and handling.

PLEASE ORDER BY PART NUMBER

Rev. 11/80

Zebco Outboard Brummet Corporation, Box 278, Tulsa, OK 74101 USA 918-886-8891

