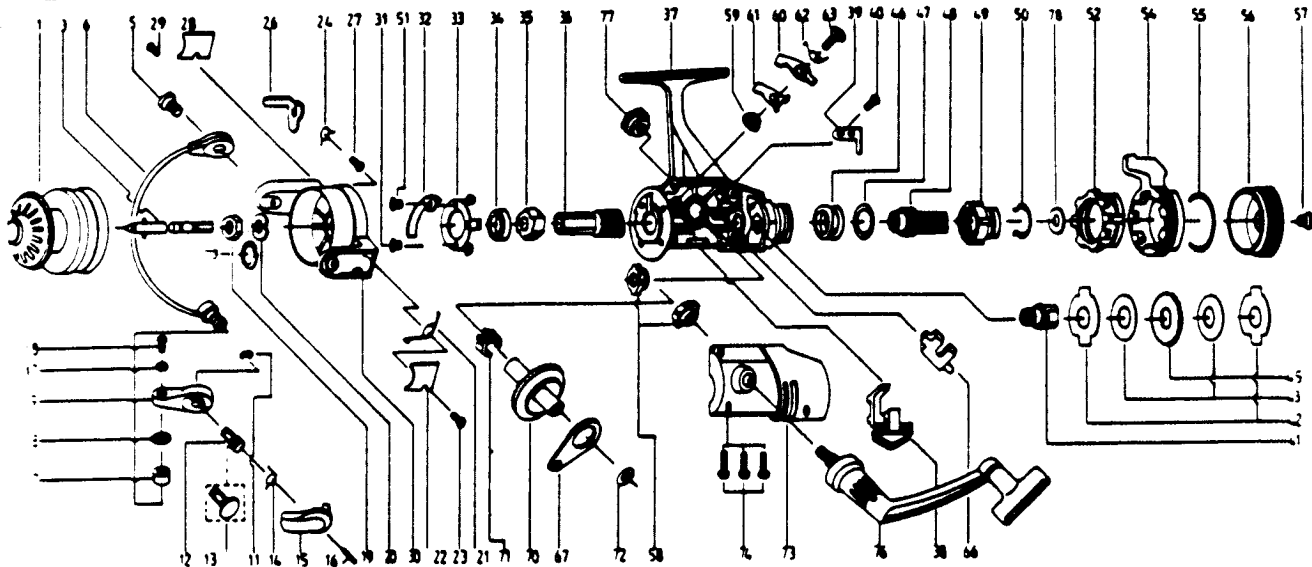


QUANTUM® QG05



**KEY PART
NO. NO.**

KEY PART NO. NO.	DESCRIPTION	PRICE
1 GT321	SPOOL ASSEMBLY	5.68
3 BT315	MAIN SHAFT ASSY	2.59
5 BT048	BAIL HOLDER SCREW	.69
6 BT347	BAIL ARM ASSY.	5.44
7 VB004	LINE ROLLER	1.09
8 VB016	LN ROLLER BUSHING	.63
9 BT007	ARM LEVER	1.72
11 BT002	E-CLIP	.85
12 BT113	TRIGGER HOLDER	.58
13 BT111	ARM LEVER CAP	1.14
14 BT114	TRIGGER SPRING	.52
15 BT115	TRIGGER	1.43
16 BT116	TRIGGER PIN	.39
17 VB102	BAIL AXLE WASHER	.29
18 VB108	BAIL AXLE SCREW	.58
19 VB006	ROTOR NUT	.58
20 BT065	ROTOR RETAINER	.58
21 BT022	BAIL SPRINGS	.69
22 BT087	BAIL SPRING COVER	.69
23 BT085	BAIL SPR.COVER SCREW	.63
24 BT049	KICK LEVER SCREW	.58
25 BT019	KICK LEVER	1.14
27 BT037	KICK LEVER SCREW	.34
28 BT024	KICK LEVER COVER	.46
29 BT085	BAIL SPR.COVER SCREW	.63
30 BT009	ROTOR ASSY	5.85
31 BT080	BEARING PLATE SCREW	.34
32 BT082	KICK LEVER GUIDE	1.14
33 BT040	BEARING PLATE	.85
34 RB028	BALL BEARING	5.73
35 BT060	RATCHET GEAR	1.83
36 BT011	PINION GEAR	3.44
37 GT301	BODY ASSEMBLY	10.95
38 BT059	ANTI-REVERSE LEVER	.58
39 BT068	CLICK CLAM	.39
40 BT067	CLICK CLAM SCREW	.29
41 BT104	SLIDER HOLDER	.63

KEY PART

NO. NO.	DESCRIPTION	PRICE
42 BT030	REAR DRAG WASHER "A"	1.27
43 BT039	REAR DRAG WASHER "B"	1.43
45 BT066	CLICK GEAR	.52
46 BT031	REAR DRAG COIL SPR.	1.14
47 BT046	REAR DRAG ADJ. WSHR.	1.03
48 BT112	REAR DRAG NUT	1.09
49 BT017	SLIDING SCREW	1.03
50 BT033	BACK CLICK CLAW	.39
51 BT182	KICK LEVER GUIDE SCR	.39
52 GT093	FIGHTING FULL SCREW	1.66
54 GT094	FIGHTING LEVER	4.02
55 GT095	FIGHTING LEVER	.85
56 GT032	REAR DRAG CAP	2.24
57 VB079	DRAG SCREW	.92
58 BT013	BODY COVER BUSHING	.69
59 BT014	A/R CLAW BUSHING	.69
60 BT063	A/R CLAW (N)	.75
61 BT064	A/R CLAW (S)	.75
62 BT061	A/R CLAW SPRING	.39
63 BT089	A/R CLAW SCREW	.34
66 BT081	PIN SLIDER	.80
67 BT025	OSCILLATING SLIDER	1.27
70 BT012	DRIVE GEAR	3.55
71 BT086	SLIDING SPRING	.46
72 RB026	CRANK GEAR SHIM	.29
73 GT323	BODY COVER ASSEMBLY	5.68
74 BT057	BODY COVER SCREW	1.14
76 GT318	HANDLE ASSEMBLY	6.31
77 GT073	HANDLE SCREW CAP	.69
78 BT046	REAR DRAG ADJ. WSHR.	1.03
79 BT120	ROTOR RET. SPRNG. W/S	.85
80 GT005	BACK CLAM (FIGHTING)	1.09
81 GT018	FIGHTING CLICK WASHER	1.09

*Not shown in diagram

Key 80 fits between keys 49, 50

Key 81 fits between keys 52, 54

Prices subject to change without notice. Prices do not include postage and handling.

PLEASE ORDER BY PART NUMBER

Rev. 11/90

Zebco Division Brunswick Corporation, Box 270, Tulsa, OK 74101 USA 918-636-6681

