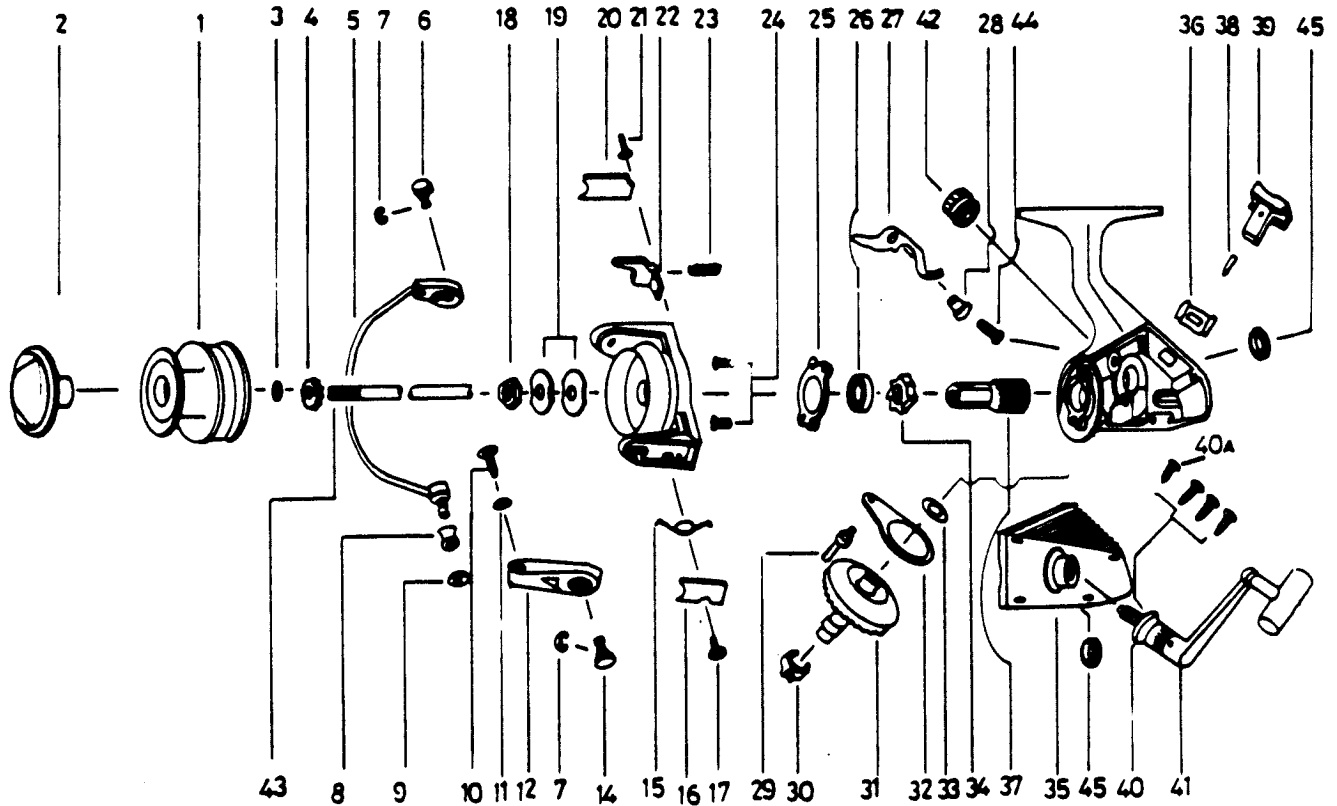


QUANTUM® QG2



KEY PART NO. NO.	DESCRIPTION	PRICE	KEY PART NO. NO.	DESCRIPTION	PRICE
1 LK321	SPOOL ASSY.	5.68	26 LK028	BEARING	9.59
2 LK050	DRAG KNOB ASSY.	4.02	27 LK063	ANTI-REVERSE CLAW	1.39
3 LK030	SPOOL ADJ. WASHER	.64	28 NS014	A/R CLAW BUSHING	.92
4 LK066	CLICK GEAR	.85	29 NS081	OSC. SLIDER PIN	2.09
5 NS347	BAIL ARM ASSY.	4.02	30 NS086	SLIDING SPRING	.85
6 NS044	BAIL HOLDER PIN	1.14	31 NS012	DRIVE GEAR	4.87
7 NS002	E-CLIP	.29	32 NS025	OSCILLATING SLIDER	2.98
8 LK004	LINE ROLLER	2.41	33 NS026	DRIVE GEAR ADJ. WSKR	.46
9 NS017	BAIL COLLAR	1.14	34 NS060	RATCHET GEAR	2.87
10 NS108	BAIL SCREW	.58	35 LK323	BODY COVER	5.46
11 NS102	BAIL WASHER	.29	36 NS090	A/R LVR. PLATE SPR.	1.14
12 NS007	ARM LEVER	1.14	37 LK011	PINION GEAR	4.55
14 NS043	ARM LEVER PIN	1.32	38 NS091	A/R LVR. PIN	.46
15 NS022	BAIL SPRING	.92	39 NS059	ANTI-REVERSE LEVER	.32
16 NS087	BAIL SPRING COVER	1.03	40 LK057	BODY COVER SCREW	.69
17 NS085	BAIL SPRING CVR SCR	.52	40 NS057	BODY COVER SCREW	.69
18 NS006	ROTOR NUT	.92	41 LK318	HANDLE ASSY.	9.05
19 NS065	ROTOR RET. WASHER	.69	42 LK073	HANDLE SCREW CAP	1.98
20 NS024	KICK LEVER COVER	.98	43 LK315	MAIN SHAFT	4.02
21 NS037	KICK LVR CVR SCR	.52	44 NS089	A/R CLAW SCREW	.29
22 NS019	KICK LEVER	1.61	45 NS013	BODY BUSHING	1.24
23 NS049	KICK LEVER SPRING	.39	47 LK301	BODY	9.16
24 NS080	BEARING PLATE SCREW	1.14	48 NS009	ROTOR	5.90
25 NS040	BEARING PLATE	1.27			

Prices subject to change without notice. Prices do not include postage and handling.

PLEASE ORDER BY PART NUMBER

Rev. 11/90

Zebco Division Brunswick Corporation, Box 270, Tulsa, OK 74101 USA 918-638-6681

