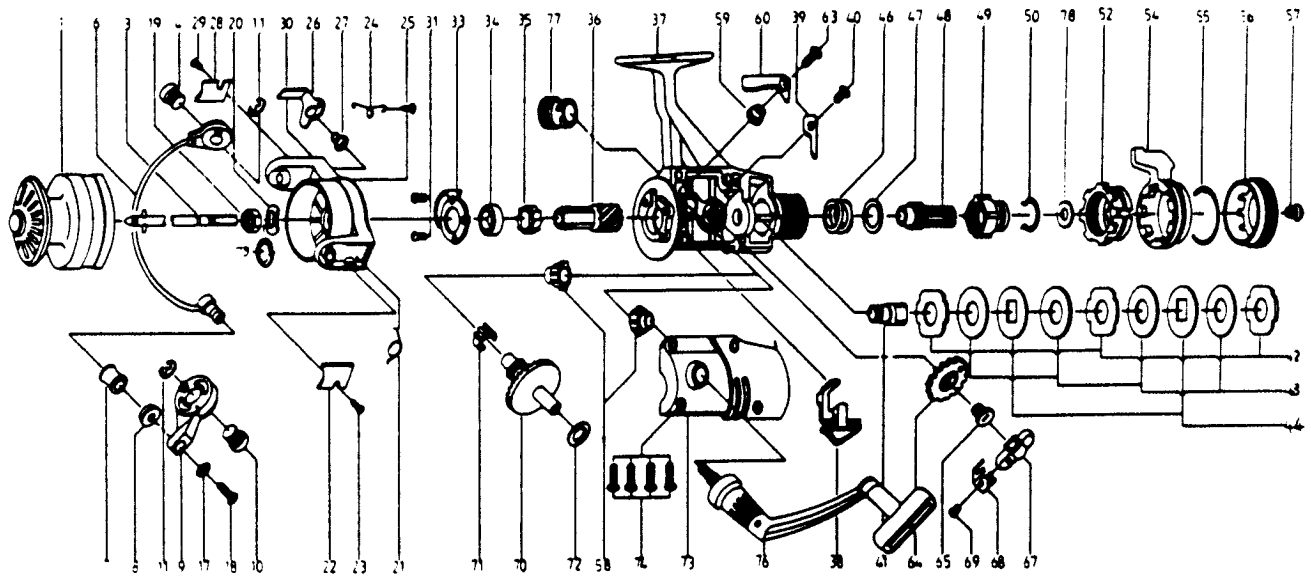


# QUANTUM® QG40



## KEY PART

NO. NO.	DESCRIPTION	PRICE
1 JT321	SPOOL ASSEMBLY	6.31
3 DT315	MAIN SHAFT ASSY.	2.24
4 DT044	BAIL HOLDER PIN	1.14
6 DT347	BAIL ARM ASSY.	5.16
7 DT004	LINE ROLLER	1.55
8 PB016	LN ROLLER BUSH.	.63
9 PB007	BAIL ARM A	1.72
10 DT043	ARM LEVER PIN	1.37
11 DT002	E-CLIP	.85
17 PB102	BAIL AXLE WASHER	.29
18 PB108	BAIL AXLE SCREW	.39
19 NB006	ROTOR NUT	.85
20 DT065	ROTOR RETAINER	.58
21 DT022	BAIL SPRING	.69
22 PB087	BAIL SPRING COVER	.63
23 BT085	BAIL SPR. COVER SCREW	.63
24 DT049	KICK LEVER SPRING	.58
25 DT058	KICK LEVER SPR. SCR.	.46
26 DT019	KICK LEVER	1.32
27 DT037	KICK LEVER SCREW	.34
28 PB024	TRIP LVR. CVR.	.63
29 BT085	BAIL SPR. COVER SCREW	.63
30 DT009	ROTOR ASSY.	7.46
31 BT080	BEARING PLATE SCREW	.34
33 DT040	BEARING PLATE	1.83
34 NB028	BALL BEARING	7.97
35 NB060	A/R RATCHET	.98
36 DT011	PINION GEAR	3.61
37 JT301	BODY ASSEMBLY	11.29
38 DT059	ANTI-REVERSE LEVER	.58
39 DT068	CLICK CLAW	.39
40 BT067	CLICK CLAW SCREW	.29
41 DT104	SLIDER HOLDER	.69
42 DT030	REAR DRAG WSHR. "A"	1.27
43 DT039	REAR DRAG WSHR. "B"	1.43
44 DT071	REAR DRAG WSHR. "D"	1.03
46 DT031	REAR DRAG COIL SPR.	1.27
47 DT046	REAR DRAG ADJ. WSHR.	1.03
48 DT112	REAR DRAG NUT	1.14
49 DT017	SLIDING SCREW	1.14
50 DT033	BACK CLICK CLAW	.46

## KEY PART

NO. NO.	DESCRIPTION	PRICE
52 JT093	FIGHTING PULL SCREW	2.00
54 JT094	FIGHTING LEVER	4.30
55 JT095	FIGHTING LVR STOP SPG	.92
56 JT032	REAR DRAG CAP	2.35
57 DT079	REAR DRAG CAP SCREW	.34
58 BT013	BODY COVER BUSHING	.69
59 DT014	A/R CLAW BUSHING	.69
60 DT063	A/R CLAW (N)	.75
63 DT089	A/R CLAW SCREW	.39
64 NB053	OSCILLATING GEAR	.92
65 NB078	OSC. GEAR SCR.	.39
67 NB025	OSCILLATOR SLIDER	1.95
68 NB083	STOPPER	.39
69 NB084	STOPPER SCREW	.29
70 NB012	CRANK GEAR	3.39
71 NB086	SLIDER SPRING	.39
72 RB026	CRANK GEAR SHIM	.29
73 JT323	BODY COVER ASSY.	6.19
74 DT057	BODY COVER SCREW	1.43
76 JT318	HANDLE ASSEMBLY	6.82
77 HT073	HANDLE SCREW CAP	.69
78 DT046	REAR DRAG ADJ. WSHR.	1.03
79 DT120	ROTOR RET. SPRG. W/S	.92
* 80 JT005	BACK CLAW (FIGHTING)	1.09
* 81 JT018	FIGHTING CLICK WASHER	1.14

\*Not shown in diagram

Key 80 fits between keys 49, 50

Key 81 fits between keys 52, 54

Prices subject to change without notice. Prices do not include postage and handling.

**PLEASE ORDER BY PART NUMBER**

Rev. 11/90

Zabco Division Brunswick Corporation, Box 270, Tulsa, OK 74101 USA 918-836-5581



BRUNSWICK