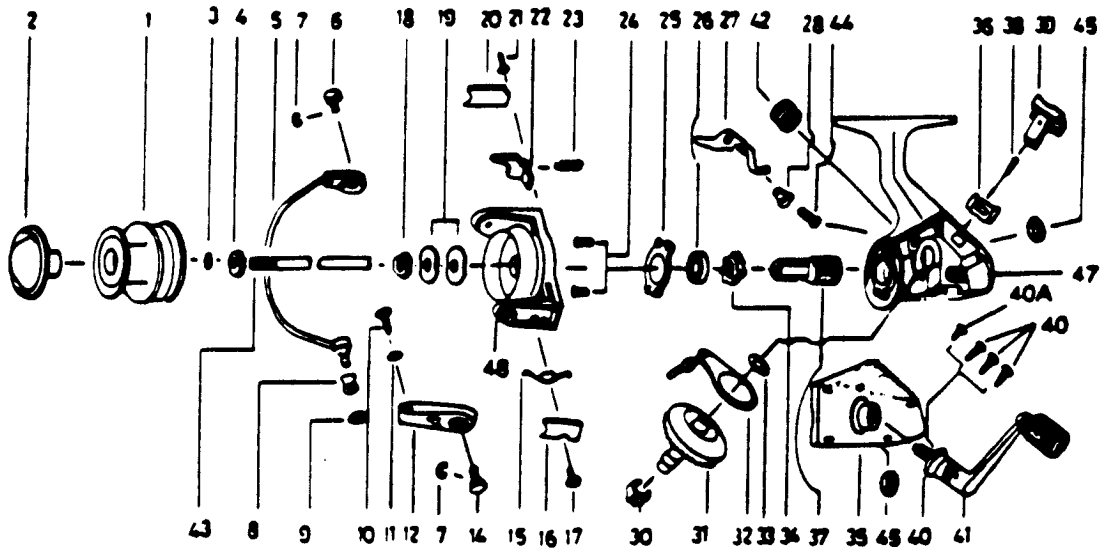


# QUANTUM QL2



KEY PART NO. NO.	DESCRIPTION	PRICE
1 LK321	SPOOL ASST.	5.68
2 LK050	DRAG KNOB ASST.	4.02
3 LK030	SPOOL ADJ. WASHER	.64
4 LK066	CLICK GEAR	.85
5 NB347	BAIL ARM ASST.	4.02
6 NB044	BAIL HOLDER FIN	1.14
7 NB002	E-CLIP	.29
8 LK004	LINE ROLLER	2.41
9 NB017	BAIL COLLAR	1.14
10 NB108	BAIL SCREW	.58
11 NB102	BAIL WASHER	.29
12 NB007	ARM LEVER	1.14
14 NB043	ARM LEVER PIN	1.32
15 NB022	BAIL SPRING	.92
16 NB087	BAIL SPRING COVER	1.03
17 NB085	BAIL SPRING CVR SCR	.52
18 NB006	ROTOR NUT	.92
19 NB065	ROTOR RET. WASHER	.69
20 NB024	KICK LEVER COVER	.98
21 NB037	KICK LVR CVR SCR	.52
22 NB019	KICK LEVER	1.61
23 NB049	KICK LEVER SPRING	.39
24 NB080	BEARING PLATE SCREW	1.14

KEY PART NO. NO.	DESCRIPTION	PRICE
25 NB040	BEARING PLATE	1.27
26 LK028	BEARING	9.59
27 LK063	ANTI-REVERSE CLAW	1.39
28 NB014	A/R CLAW BUSHING	.92
29 NB081	OSC. SLIDER PIN	2.09
30 NB086	SLIDING SPRING	.85
31 NB012	DRIVE GEAR	4.87
32 NB025	OSCILLATING SLIDER	2.98
33 NB026	DRIVE GEAR ADJ. WSHR	.46
34 NB060	RATCHET GEAR	2.87
35 LK323-1	BODY COVER	5.46
36 NB090	A/R LVR. PLATE SPR.	1.14
37 LK011	PINION GEAR	4.55
38 NB091	A/R LVR. FIN	.46
39 NB059	ANTI-REVERSE LEVER	.92
40 LK057	BODY COVER SCREW	.91
40 NB057	BODY COVER SCREW	.69
41 LK318	HANDLE ASST.	9.05
42 LK073	HANDLE SCREW CAP	1.98
43 LK315	MAIN SHAFT	4.02
44 NB089	A/R CLAW SCREW	.29
45 NB013	BODY BUSHING	1.24
47 LK301-1	BODY	10.82
48 NB009	ROTOR	5.90

\*For reels produced prior to 7/80.

Prices subject to change without notice. Prices do not include postage and handling.

**PLEASE ORDER BY PART NUMBER**

Rev. 11/80

Zebco Division Brunswick Corporation, Box 270, Tulsa, OK 74101 USA 918-636-6881

