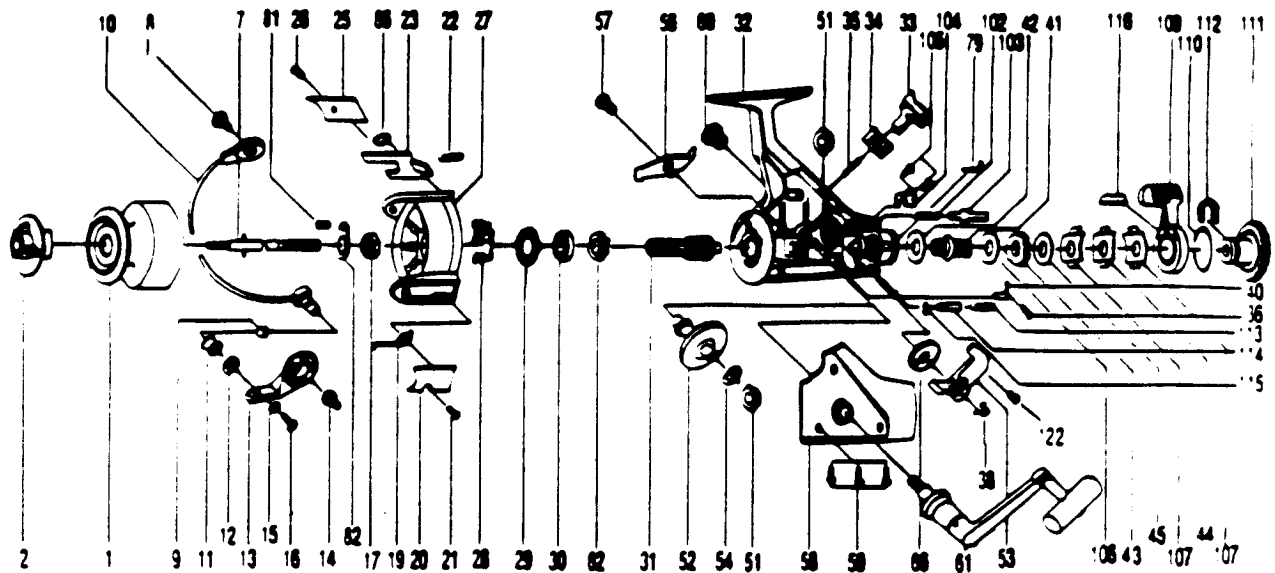


QUANTUM QMD25



| KEY PART NO. NO. | DESCRIPTION | PRICE |
|------------------|---------------------|-------|
| 1 YO321 | SPOOL ASSY | 7.17 |
| 2 YO050 | DRAG KNOB ASSY | 4.30 |
| 7 YO315 | MAIN SHAFT ASSY | 3.39 |
| 8 RS048 | BAIL HOLDER SCREW | 1.72 |
| 9 NS016 | LINE ROLLER BUSHING | 1.66 |
| 10 RS347 | BAIL ARM ASSY | 6.13 |
| 11 NS004 | LINE ROLLER | 1.72 |
| 12 RS017 | BAIL COLLAR | 1.27 |
| 13 RS007 | ARM LEVER | 1.72 |
| 14 RS051 | ARM LEVER SCREW | 1.72 |
| 15 NB102 | BAIL AXLE WASHER | .29 |
| 16 RS108 | BAIL SCREW | .58 |
| 17 RS006 | ROTOR NUT | .92 |
| 19 RS022 | BAIL SPRING | .85 |
| 20 YO087 | BAIL SPRING COVER | 1.03 |
| 21 RS085 | BAIL SPR. CVR. SCR. | .58 |
| 22 RS049 | KICK LEVER SPRING | .46 |
| 23 RS019 | KICK LEVER | 1.55 |
| 25 RS024 | KICK LEVER COVER | 1.03 |
| 26 RS037 | KICK LVR. CVR. SCR. | .58 |
| 27 RS009 | ROTOR | 8.60 |
| 28 RS080 | BEARING PLATE SCREW | 1.14 |
| 29 RS040 | BEARING PLATE | 1.27 |
| 30 RS028 | BALL BEARING | 9.12 |
| 31 YO011 | PINION GEAR | 2.87 |
| 32 YO301 | BODY ASSY | 10.43 |
| 33 RS059 | ANTI-REVERSE LEVER | .85 |
| 34 RS090 | A/R LVR. PLATE SPR. | 1.14 |
| 35 NB091 | A/R LEVER PIN | .29 |
| 36 RS067 | CLICK CLAM SCREW | .58 |
| 38 RS083 | OSC. SLIDER STOPPER | 3.39 |
| 40 RS068 | CLICK CLAM | .85 |
| 41 RS104 | SLIDER HOLDER | 1.14 |
| 42 RS046 | DRAG WASHER "C" | .75 |
| 43 RS047 | DRAG WASHER "F" | .85 |

| KEY PART NO. NO. | DESCRIPTION | PRICE |
|------------------|----------------------|-------|
| 44 RS030 | DRAG WASHER "A" | 1.14 |
| 45 RS039 | DRAG WASHER "B" | .85 |
| 51 RS013 | BODY/BODY COVER BUSH | 1.14 |
| 52 YO012 | DRIVE GEAR | 3.39 |
| 53 RS025 | OSCILLATING SLIDER | 3.15 |
| 54 RS026 | DRIVE GEAR ADJ. WASH | .46 |
| 56 RS063 | ANTI-REVERSE CLAM | 1.43 |
| 57 RS089 | A/R CLAM SCREW | .80 |
| 58 YO323 | BODY COVER ASSY | 7.97 |
| 59 RS057 | BODY COVER SCREW | .85 |
| 60 YO073 | HANDLE SCREW CAP | 1.14 |
| 61 YO318 | HANDLE ASSY | 9.12 |
| 62 RS060 | RATCHET GEAR | 2.59 |
| 64 RS046 | DRAG WASHER "C" | .75 |
| 65 RS086 | SLIDING SPRING | .63 |
| 66 YO053 | OSCILLATING GEAR | 1.27 |
| 79 RS005 | BACK CLAM | .98 |
| 81 RS058 | ROTOR NUT LOCK SCR. | .58 |
| 82 RS088 | ROTOR NUT LOCK | 1.32 |
| 102 RS142 | M/SHAFT STOPPER SPR | .34 |
| 103 RS143 | M/SHAFT STOPPER | 1.27 |
| 104 RS144 | STOPPER PLATE | .58 |
| 105 RS145 | STOPPER PLATE SCR. | .58 |
| 106 RS146 | SL/HOLDER RATCHET | 1.83 |
| 107 RS147 | DRAG SPR. WASHER A | 1.72 |
| 109 YO148 | BAIT CLICK ACTUATOR | 4.02 |
| 110 RS149 | BAIT DRAG RING | .92 |
| 111 YO150 | BAIT CLICK DRAG KM | 2.00 |
| 112 RS151 | BT/CLK DRAG KM.RING | 1.14 |
| 113 RS152 | BT/CLK LOCK SH. SPR | .46 |
| 114 RS153 | BT/CLK LOCK SHAFT | 1.14 |
| 115 RS154 | "E" CLIP | .29 |
| 116 RS155 | BAIT INSERT | 2.00 |
| 122 RS161 | O/S STOPPER SCREW | .58 |

Prices subject to change without notice. Prices do not include postage and handling.

PLEASE ORDER BY PART NUMBER

Rev. 11/80

Zebco Division Brunswick Corporation, Box 270, Tulsa, OK 74101 USA 918-688-6881

