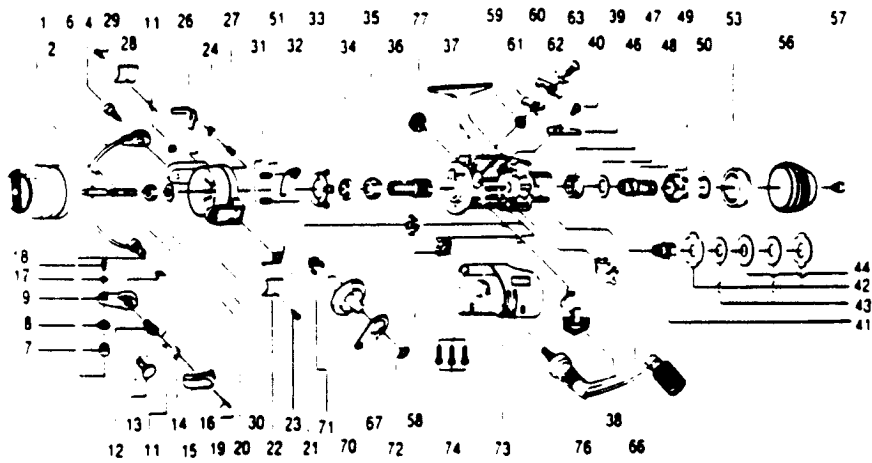


QUANTUM QP05, QP20



QP05		
KEY PART NO. NO.	DESCRIPTION	PRICE
1	NL321 SPOOL ASST.	5.48
2	ST315 MAIN SHAFT ASST	2.39
3	ST081 BAIL HOLDER ASST	.52
4	ST347 BAIL ARM ASST.	5.44
5	ST004 LINE ROLLER	1.75
6	ST017 SLIDING SCREW	1.03
7	ST007 ARM LEVER	1.72
8	ST034 E-CLIP	1.29
9	ST113 TRIGGER HOLDER	.98
10	ST111 ARM LEVER CAP	1.14
11	ST114 TRIGGER SPRING	.52
12	ST113 TRIGGER	1.43
13	ST116 TRIGGER PIN	.39
14	ST102 BAIL AXLE WASHER	.67
15	ST108 BAIL AXLE SCREW	.52
16	ST006 ROTOR NUT	1.18
17	ST045 ROTOR RETAINER	.58
18	ST022 BAIL SPRING	.69
19	ST087 BAIL SPRING COVER	.69
20	ST088 BAIL SPR. COVER SCREW	.63
21	ST049 KICK LEVER SCREW	.98
22	ST019 KICK LEVER	1.14
23	ST037 KICK LEVER SCREW	.34
24	ST024 KICK LEVER COVER	.46
25	ST085 BAIL SPR. COVER SCREW	.63
26	NL009 ROTOR ASST.	6.33
27	ST080 BEARING PLATE SCREW	.34
28	ST082 KICK LEVER GUIDE	1.14
29	ST040 BEARING PLATE	.88
30	RB028 BALL BEARING	9.73
31	ST060 RATCHET GEAR	1.83
32	ST011 PINION GEAR	3.44
33	NL301 BODY ASST.	9.27
34	ST059 ANTI-REVERSE LEVER	.58
35	ST048 CLICK CLAM	.39
36	ST088 BAIL SPR. COVER SCREW	.63
37	ST104 SLIDER HOLDER	.63
38	ST039 REAR DRAG WASHER 'A'	1.27
39	ST039 REAR DRAG WASHER 'B'	1.43
40	ST045 REAR DRAG WASHER 'D'	.52
41	ST043 REAR DRAG COIL SPRING	1.34
42	ST044 REAR DRAG ADJ. WASH.	1.03
43	ST112 REAR DRAG NUT	1.09
44	ST029 SLIDING SCREW	1.44
45	ST033 BACK CLICK CLAM	.39
46	ST088 BAIL SPR. COVER SCREW	.63
47	ST132 REAR DRAG STOPPER	1.43
48	NL032 REAR DRAG CAP	3.35
49	ST079 DRAG SCREW	.52
50	ST013 BODY COVER BUSHING	.69
51	ST091 A/R CLAM BUSHING	1.03
52	ST043 A/R CLAM (H)	.75
53	ST044 A/R CLAM (S)	.75
54	ST061 A/R CLAM SPRING	.39
55	ST083 A/R CLAM SCREW	.52
56	ST081 PIN SLIDER	.80
57	ST028 OSCILLATING SLIDER	1.27
58	ST012 DRIVE GEAR	3.58
59	ST086 SLIDING SPRING	.46
60	ST024 CRANK GEAR SHIM	.62
61	NL323 BODY COVER ASST.	5.41
62	ST087 BODY COVER SCREW	1.14
63	NL318 HANDLE ASST.	7.73
64	ST073 HANDLE SCREW CAP	.52
65	ST120 ROTOR RET. SPRNG. W/S	.85

QP20		
KEY PART NO. NO.	DESCRIPTION	PRICE
1	JL321 SPOOL ASST.	5.48
2	CT315 MAIN SHAFT	2.46
3	CT081 BAIL HOLDER PIN	1.70
4	CT347 BAIL ARM ASST.	4.99
5	CT004 LINE ROLLER	2.42
6	CT017 SLIDING SCREW	1.14
7	CT007 ARM LEVER	1.72
8	CT034 E-CLIP	1.29
9	CT113 TRIGGER HOLDER	.58
10	ST111 ARM LEVER CAP	1.14
11	CT114 TRIGGER SPRING	.52
12	ST113 TRIGGER	1.43
13	ST116 TRIGGER PIN	.39
14	CT102 BAIL AXLE WASHER	.67
15	CT108 BAIL AXLE SCREW	.52
16	CT006 ROTOR NUT	1.18
17	CT068 ROTOR RETAINER	.82
18	CT022 BAIL SPRING	.69
19	CT087 BAIL SPRING COVER	.69
20	CT088 BAIL SPR. COVER SCREW	.63
21	CT049 KICK LEVER SPRING	.58
22	ST019 KICK LEVER	1.27
23	ST037 KICK LEVER SCREW	.34
24	CT024 KICK LEVER COVER	.98
25	ST085 BAIL SPR. COVER SCREW	.63
26	NL009 ROTOR	6.70
27	ST080 BEARING PLATE SCREW	.34
28	CT082 KICK LEVER GUIDE	.85
29	CT040 BEARING PLATE	.85
30	CT028 BALL BEARING	9.79
31	ST060 RATCHET GEAR	1.83
32	CT011 PINION GEAR	3.55
33	JL301 BODY ASST.	9.27
34	CT059 ANTI-REVERSE LEVER	.58
35	CT048 CLICK CLAM	.39
36	ST088 BAIL SPR. COVER SCREW	.63
37	CT104 SLIDER HOLDER	.63
38	CT039 REAR DRAG WASHER 'A'	1.27
39	CT039 REAR DRAG WASHER 'B'	1.43
40	CT045 REAR DRAG WASHER 'D'	.52
41	CT043 REAR DRAG COIL SPRING	1.34
42	CT044 REAR DRAG ADJ. WASH.	1.03
43	CT112 REAR DRAG NUT	1.09
44	CT029 SLIDING SCREW	1.44
45	CT033 BACK CLICK CLAM	.39
46	ST088 BAIL SPR. COVER SCREW	.63
47	CT132 REAR DRAG STOPPER	1.49
48	NL032 REAR DRAG CAP	3.35
49	ST079 DRAG SCREW	.52
50	ST013 BODY COVER BUSHING	.69
51	ST014 A/R CLAM BUSHING	.69
52	CT063 A/R CLAM (H)	.75
53	CT064 A/R CLAM (S)	.80
54	CT061 A/R CLAM SPRING	.39
55	ST089 A/R CLAM SCREW	.34
56	ST081 PIN SLIDER	.80
57	ST028 OSCILLATING SLIDER	1.27
58	CT012 DRIVE GEAR	3.58
59	ST086 SLIDING SPRING	.46
60	ST024 CRANK GEAR SHIM	.62
61	JL323 BODY COVER ASST.	5.41
62	ST087 BODY COVER SCREW	1.14
63	NL318 HANDLE ASST.	7.47
64	CT073 HANDLE SCREW CAP	.52
65	CT120 ROTOR RET. SPRNG. W/S	.92

*Not shown in diagram
Fits between keys 19 & 20

Prices subject to change without notice. Prices do not include postage and handling.

PLEASE ORDER BY PART NUMBER

Rev. 11/90

Zebco Division Brunswick Corporation, Box 270, Tulsa, OK 74101 USA 918-638-5551

