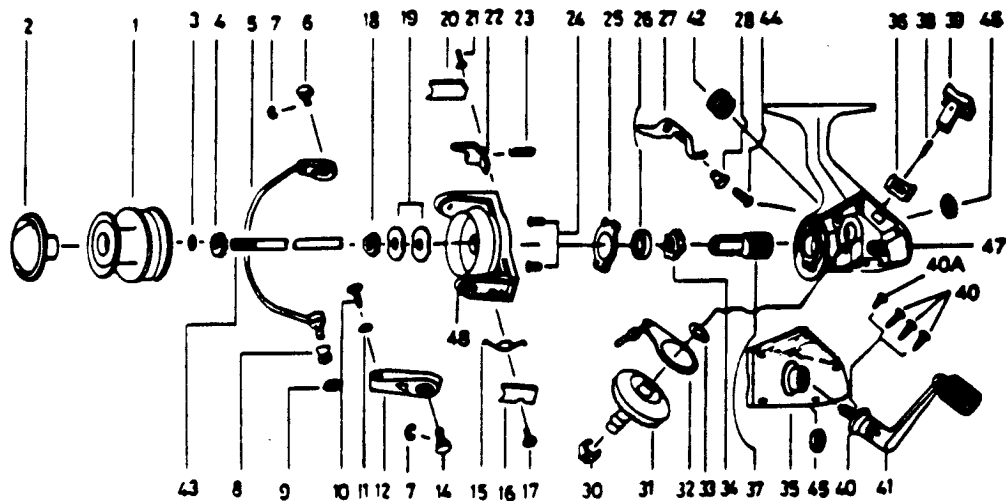


QUANTUM QP2



KEY PART NO. NO.	DESCRIPTION	PRICE	KEY PART NO. NO.	DESCRIPTION	PRICE
1	GL321	5.46	26	LK028	BEARING
2	LK032	3.61	27	LK063	ANTI-REVERSE CLAM
3	LK030	.64	28	NS092	A/R CLAM BUSHING
4	LK066	.85	30	NS086	SLIDING SPRING
5	NS347	4.02	31	NS012	DRIVE GEAR
6	NS051	1.70	32	NS025	OSCILLATING SLIDER
7	NS034	.72	33	NS026	DRIVE GEAR ADJ. WSHR
8	LK004	2.41	34	NS060	RATCHET GEAR
9	NS017	1.14	35	GL323	BODY COVER
10	NS018	.82	36	NS087	BAIL SPRING COVER
11	NS102	.29	37	LK011	PINION GEAR
12	NS007	1.14	38	NS091	A/R LVR. PIN
14	NS116	1.70	39	NS059	ANTI-REVERSE LEVER
15	NS022	.92	440	LK057	BODY COVER SCREW
16	NS087	1.03	40	NS057	BODY COVER SCREW
17	NS088	.52	41	GL318	HANDLE ASSY.
18	NS006	.92	42	LK073	HANDLE SCREW CAP
19	NS065	.69	43	LK015	MAIN SHAFT
20	NS024	.98	44	NS063	A/R CLAM SCREW
21	NS037	.52	45	NS013	BODY BUSHING
22	NS019	1.61	47	GL301	BODY
23	NS049	.39	48	GLO09	ROTOR
24	NS080	1.14			
25	NS040	1.27			

Prices subject to change without notice. Prices do not include postage and handling.

PLEASE ORDER BY PART NUMBER

Rev. 11/80

Zetec Division Brunswick Corporation, Box 270, Tulsa, OK 74101 USA 918-836-8881

