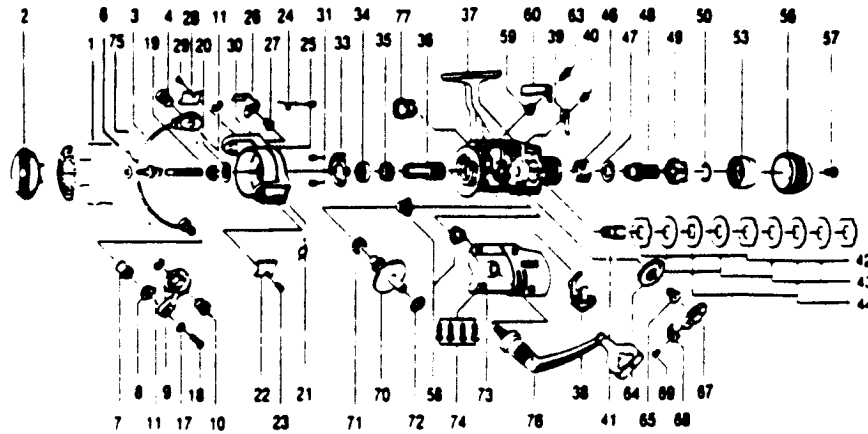


QUANTUM QP40, QP50, QP70



QP40			QP50			QP70		
KEY PART NO. NO.	DESCRIPTION	PRICE	KEY PART NO. NO.	DESCRIPTION	PRICE	KEY PART NO. NO.	DESCRIPTION	PRICE
1	KL321 SPOOL ASSY.	6.07	1	KL321 SPOOL ASSY.	6.61	1	KL321 SPOOL ASSY.	7.44
3	DT315 MAIN SHAFT ASSY.	2.24	3	DT315 MAIN SHAFT ASSY.	2.59	2	HL030 DRAG KNOB ASSY.	2.06
4	DT051 BAIL HOLDER PIN	1.85	4	DT051 BAIL HOLDER PIN	1.85	3	PT315 MAIN SHAFT ASSY.	2.87
6	DT347 BAIL ARM ASSY.	5.16	6	DT347 BAIL ARM ASSY.	5.16	4	PT031 BAIL HOLDER PIN	1.44
7	DT004 LINE ROLLER	1.59	7	DT004 LINE ROLLER	2.42	6	PT347 BAIL ARM ASSY.	5.73
8	DT017 SLIDING SCREW	1.14	8	DT017 BAIL COLLAR	1.44	7	PT004 LINE ROLLER	1.55
9	DT007 ARM LEVER	2.01	9	DT007 BAIL ARM 'A'	2.01	8	PT017 SLIDING SCREW	1.27
10	DT116 ARM LEVER PIN	1.70	10	DT116 ARM LEVER PIN	1.80	9	PT007 ARM LEVER	3.44
11	DT034 E-CLIP	.72	11	DT034 E-CLIP	.72	10	PT116 ARM LEVER PIN	1.80
17	DT102 BAIL AXLE WASHER	.67	17	DT102 BAIL AXLE WASHER	.67	11	DT034 E-CLIP	.72
18	DT108 BAIL AXLE SCREW	.46	18	DT108 BAIL AXLE SCREW	.46	17	PT102 BAIL WASHER	.39
19	DT006 ROTOR NUT	1.34	19	DT006 ROTOR NUT	1.34	18	PT108 BAIL AXLE SCREW	.72
20	DT065 ROTOR RETAINER	.58	20	DT065 ROTOR RETAINER	.58	19	DT006 ROTOR NUT	1.34
21	DT022 BAIL SPRING	.69	21	DT022 BAIL SPRING	.69	20	DT065 ROTOR RETAINER	1.14
22	DT024 BAIL SPRING COVER	1.08	22	DT024 KICK LEVER COVER	.52	21	DT022 BAIL SPRING	.75
23	DT085 BAIL SPR. COVER SCREW	.63	23	DT085 BAIL SPR. COVER SCREW	.63	22	PT024 BAIL SPRG/TRIP LVR. COVER	.77
24	DT049 KICK LEVER SPRING	.58	24	DT049 KICK LEVER SPRING	.58	23	DT085 BAIL SPR. COVER SCREW	.63
25	DT058 KICK LEVER SPR. SCR.	.46	25	DT058 KICK LEVER SPR. SCR.	.46	24	PT049 KICK LEVER SPRING	.52
26	DT019 KICK LEVER	1.32	26	DT019 KICK LEVER	1.32	25	DT058 KICK LEVER SPR. SCR.	.46
27	DT037 KICK LEVER SCREW	.34	27	DT037 KICK LEVER SCREW	.39	26	DT019 KICK LEVER	1.32
28	DT024 BAIL SPRING COVER	1.08	28	DT024 KICK LEVER COVER	.52	27	DT037 KICK LEVER SCREW	.38
29	DT085 BAIL SPR. COVER SCREW	.63	29	DT085 BAIL SPR. COVER SCREW	.63	28	PT037 KICK LEVER SCREW	.77
30	KL009 ROTOR ASSY.	8.03	30	KL009 ROTOR ASSY.	7.21	29	DT085 BAIL SPR. COVER SCREW	.63
31	DT080 BEARING PLATE SCREW	1.34	31	DT080 BEARING PLATE SCREW	.34	30	KL009 ROTOR ASSY.	8.24
33	DT040 BEARING PLATE	1.83	33	DT040 BEARING PLATE	1.83	31	DT080 BEARING PLATE SCREW	1.34
34	DT034 E-CLIP	.72	34	DT034 BALL BEARING	10.82	33	PT040 BEARING PLATE	.03
35	DT060 A/R RATCHET	3.09	35	DT060 A/R RATCHET	3.09	34	PT038 BALL BEARING	9.27
36	DT011 PINION GEAR	3.61	36	DT011 PINION GEAR	3.61	35	PT060 A/R RATCHET	1.55
37	KL301 BODY ASSY.	10.82	37	KL301 BODY ASSY.	10.82	36	DT011 PINION GEAR	4.02
38	DT059 ANTI-REVERSE LEVER	.58	38	DT059 ANTI-REVERSE LEVER	.58	37	KL301 BODY ASSY.	14.94
39	DT068 CLICK CLAM	.39	39	DT068 CLICK CLAM	.39	38	DT059 ANTI-REVERSE LEVER	.63
40	DT085 BAIL SPR. COVER SCREW	.63	40	DT085 BAIL SPR. COVER SCREW	.63	39	DT068 CLICK CLAM	.63
41	DT104 SLIDER HOLDER	.69	41	DT104 SLIDER HOLDER	.69	40	DT085 BAIL SPR. COVER SCREW	.75
42	DT030 REAR DRAG WASH. 'A'	1.27	42	DT030 REAR DRAG WASH. 'A'	1.27	41	DT104 SLIDER HOLDER	.77
43	DT039 REAR DRAG WASH. 'B'	1.43	43	DT039 REAR DRAG WASH. 'B'	1.43	42	PT030 REAR DRAG WASH. 'A'	1.32
44	DT045 REAR DRAG WASH. 'D'	1.70	44	DT045 REAR DRAG WASH. 'D'	1.70	43	PT039 REAR DRAG WASH. 'B'	1.55
46	DT043 ARM LEVER PIN	1.37	46	DT043 ARM LEVER PIN	1.37	44	PT049 REAR DRAG WASH. 'D'	1.80
47	DT046 REAR DRAG ADJ. WASH.	1.03	47	DT046 REAR DRAG ADJ. WASH.	1.03	46	PT043 ARM LEVER PIN	1.41
48	DT112 REAR DRAG NUT	1.14	48	DT112 REAR DRAG NUT	1.14	47	PT046 REAR DRAG ADJ. WASH.	1.03
49	DT029 SLIDING SCREW	1.59	49	DT029 SLIDING SCREW	1.59	48	PT112 REAR DRAG NUT	1.27
50	DT033 BACK CLICK CLAM	.46	50	DT033 BACK CLICK CLAM	.46	49	DT029 SLIDING SCREW	1.55
53	DT132 REAR DRAG STOPPER	1.72	53	DT132 REAR DRAG STOPPER	1.72	50	PT033 BACK CLICK CLAM	.46
56	KL032 REAR DRAG CAP	3.39	56	KL032 REAR DRAG CAP	3.39	53	DT132 REAR DRAG STOPPER	1.82
57	DT079 REAR DRAG CAP SCREW	.34	57	DT079 REAR DRAG CAP SCREW	.34	56	KL032 REAR DRAG CAP	1.51
58	DT013 BODY COVER BUSHING	.69	58	DT013 BODY COVER BUSHING	.69	57	DT079 REAR DRAG CAP SCREW	.34
59	DT091 A/R CLAM BUSHING	1.03	59	DT091 A/R CLAM BUSHING	1.03	58	DT013 BODY CVR. BUSHING	1.78
60	DT063 A/R CLAM (N)	.79	60	DT063 A/R CLAM (N)	.79	59	DT091 A/R CLAM BUSHING	1.03
63	DT083 A/R CLAM SCREW	.82	63	DT083 A/R CLAM SCREW	.82	60	DT063 A/R CLAM (N)	.85
64	DT083 OSC. GEAR	2.32	64	DT083 OSC. GEAR	2.32	63	DT083 A/R CLAM SCREW	.82
65	DT035 OSC. GEAR SCREW	.62	65	DT035 OSC. GEAR SCREW	.62	64	PT083 OSCILLATING GEAR	1.12
67	DT025 OSC. SLIDER	2.58	67	DT025 OSC. SLIDER	2.58	65	PT035 OSC. GEAR SCREW	1.08
68	DT078 STOPPER	1.08	68	DT078 STOPPER	1.08	67	PT025 OSCILLATOR SLIDER	2.32
69	DT161 STOPPER SCREW	.52	69	DT161 STOPPER SCREW	.52	68	PT078 STOPPER	.46
70	DT012 CRANK GEAR	5.15	70	DT012 CRANK GEAR	5.15	69	DT161 STOPPER SCREW	.52
71	DT086 SLIDER SPRING	.82	71	DT086 SLIDER SPRING	.82	70	PT012 DRIVE GEAR	3.73
72	DT026 CRANK GEAR SHIN	.62	72	DT026 CRANK GEAR SHIN	.62	71	PT086 SLIDER SPRING	.67
73	KL323 BODY COVER ASSY.	5.92	73	KL323 BODY COVER ASSY.	5.92	72	DT026 CRANK GEAR SHIN	.62
74	DT057 BODY COVER SCREW	1.43	74	DT057 BODY COVER SCREW	1.43	73	KL323 BODY COVER ASSY.	5.92
76	JT318 HANDLE ASSEMBLY	6.82	76	JT318 HANDLE ASSEMBLY	7.31	74	DT057 BODY COVER SCREW	.46
77	CT073 HANDLE SCREW CAP	.52	77	CT073 HANDLE SCREW CAP	.52	75	PT056 SPOOL ADJ. WASHER	1.33
						76	HL318 HANDLE ASSY.	8.24
						77	CT073 HANDLE SCREW CAP	.52

Prices subject to change without notice. Prices do not include postage and handling.

PLEASE ORDER BY PART NUMBER

Rev. 9/89

Zebco Division Brunswick Corporation, Box 270, Tulsa, OK 74101 USA 918-636-6681